

INSTRUCTION SHEET

MMB-1X1-12C MONITOR MOUNT

MOUNTING BASE

REFER TO PARTS LIST ON PAGE 3

Clamp Mounting (FIGURE A)

- 1) Slide knob on to bolt (short bolt), ensuring the bolt head is securely engaged into the knob.
- 2) Screw bolt in to the lower clamp bracket and press clamp pad on to the threaded end of the bolt.
- 3) Hook lower clamp bracket into one of the top 2 (of the 3) positions provided.
- 4) Position clamp bracket and pole assembly onto work surface in desired location.

NOTE: Upper clamp bracket must contact edge of work surface.

- 5) Using knob tighten pole base assembly securely to work surface.

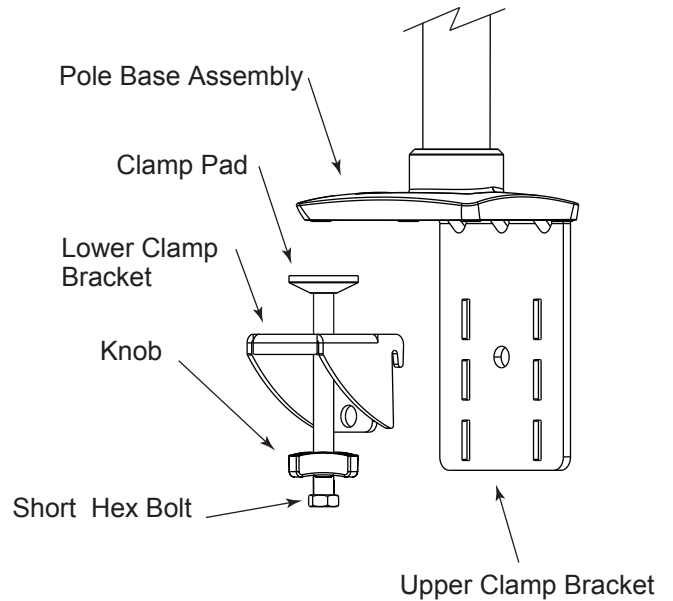


FIGURE A

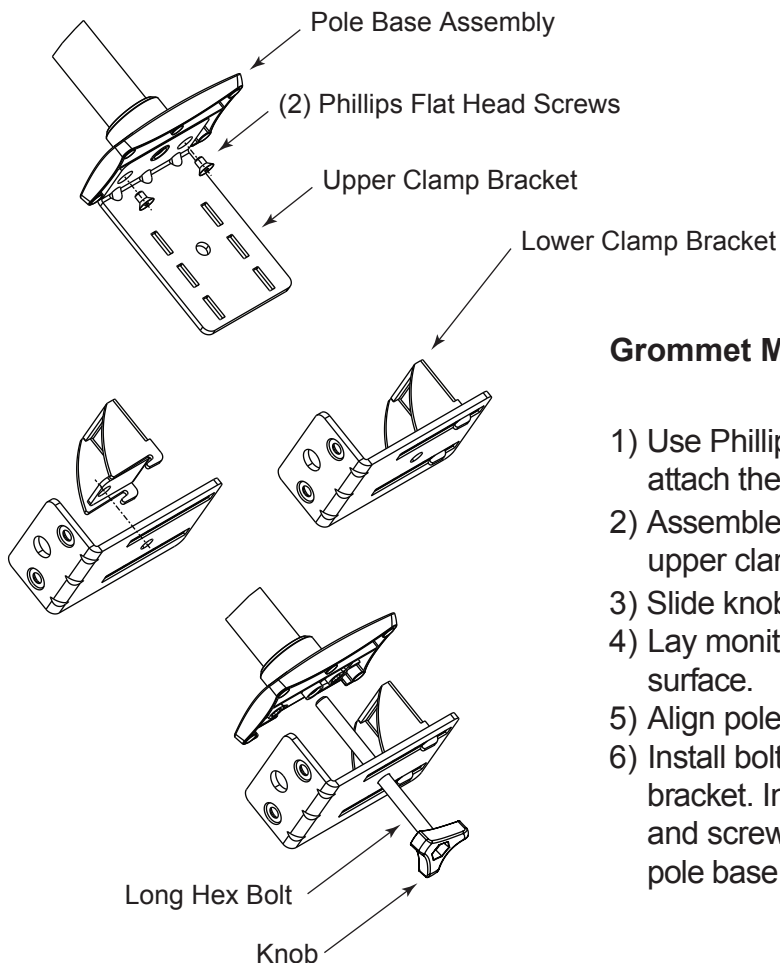
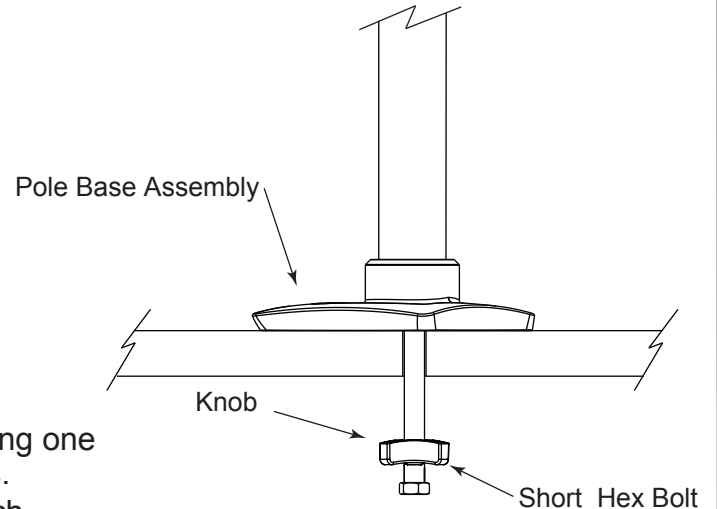
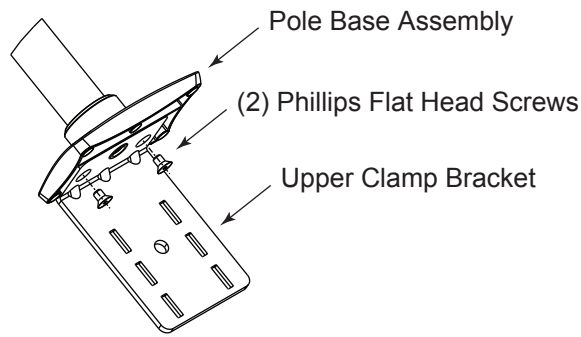


FIGURE B

Grommet Mounting (FIGURE B)

- 1) Use Phillips screwdriver to remove two (2) screws which attach the upper clamp bracket to pole base.
- 2) Assemble lower clamp bracket to furthest slots on upper clamp bracket to align clearance holes.
- 3) Slide knob onto bolt (long bolt).
- 4) Lay monitor cables through grommet holes in the work surface.
- 5) Align pole on work surface.
- 6) Install bolt through the clearance holes on clamp bracket. Insert the threaded end through the grommet and screw into the pole base, using knob to tighten pole base assembly securely to work surface.



L5 Lectern Mounting (FIGURE C)

- 1) From bottom of worksurface, drill a 1/2" dia hole using one of the existing factory drilled 1/2" pilot hole locations.
- 2) Use Phillips screwdriver to remove two (2) screws which attach the upper clamp bracket to pole base.
- 3) Slide knob onto bolt (short bolt).
- 4) Position pole base assembly over drilled hole on work surface.
- 5) Install bolt through the clearance hole in worksurface into threaded hole on pole base. Using knob, tighten pole base assembly securely to work surface.

MONITOR MOUNT ATTACHMENT (FIGURE D)

- 1) Slide arm support ring onto pole at desired height and lock into place.
- 2) Snap pole joint bushing into monitor mount knuckle (may already be inside monitor mount knuckle).
- 3) Slide monitor mount knuckle onto pole.
- 4) Snap trim ring onto monitor mount knuckle.
- 5) Insert cables into cable management clips.

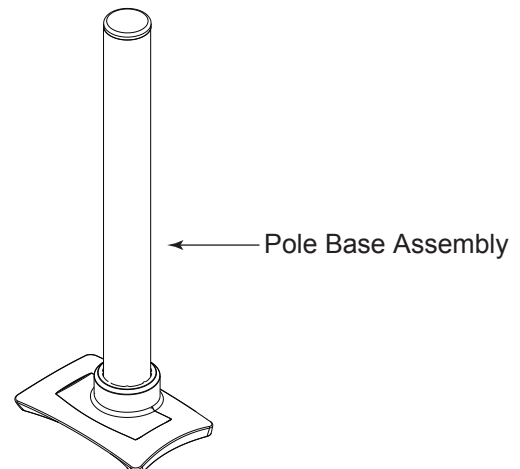
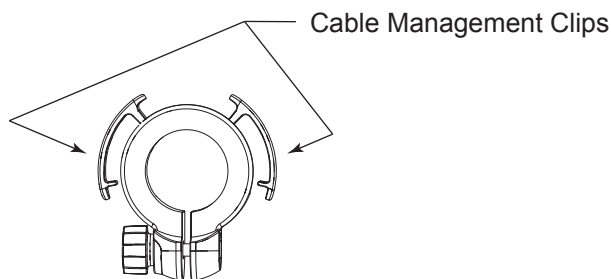
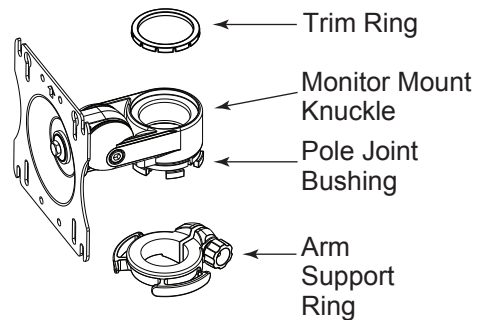


FIGURE D

MONITOR ATTACHMENT (FIGURE E)

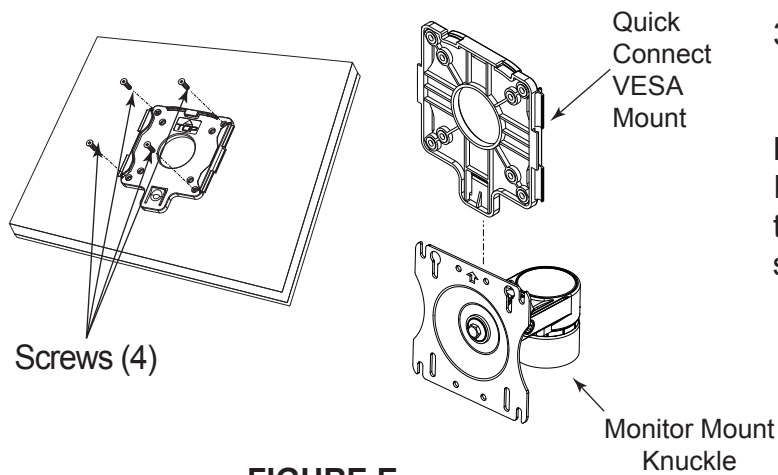
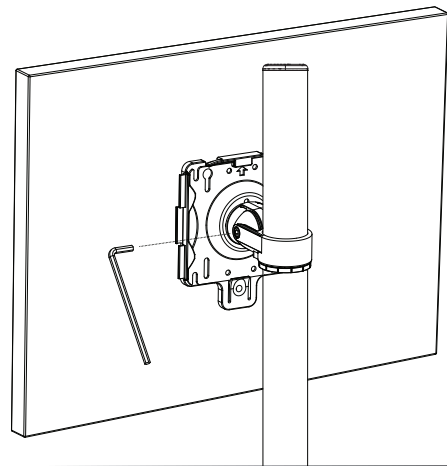


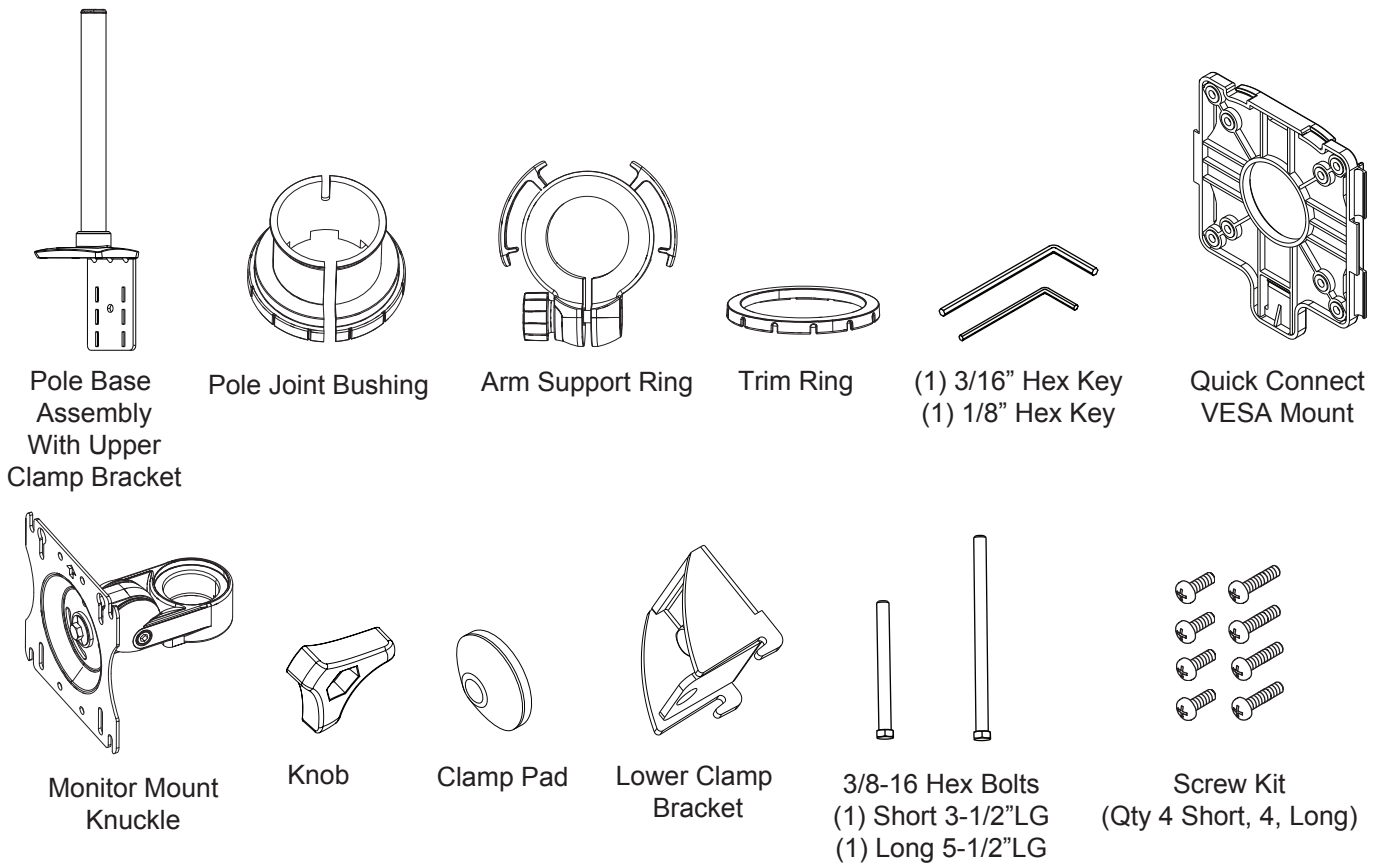
FIGURE E

- 1) Attach quick connect vesa mount to monitor using the appropriate screws (short or long).
- 2) Slide quick connect bracket onto monitor mount knuckle until it clicks into place.
- 3) Depress tab on base of quick connect bracket to release from mount.

NOTE: Adjusting the Tilt Tension:
If the monitor drops or is too tight, adjust the tension screw at the side of the head as shown using the 3/16" hex key.



PARTS LIST





Middle Atlantic Products

what great systems are built on™

middleatlantic.com ■ 800.266.7225

WARRANTY

Middle Atlantic Products, Inc. (the "Company") warrants the MMB-1X1-12C Monitor Mount to be free from defects in material or workmanship under normal use and conditions for a period of (3) years from date of shipment by the Company.

The Company's entire liability to the purchaser, and the purchaser's (or any other party's) sole and exclusive remedy, under this warranty shall be limited, at the Company's option, to either (a) return of and refund of the price paid for, or (b) repair or replacement at the Company's factory of the products purchased, or any part or parts thereof, which the Company has determined to be defective after inspection thereof at the Company's factory.

This warranty does not cover damage due to acts of God, accident, misuse, abuse or negligence by parties other than the Company, or any modification or alteration of the products. In addition, this warranty does not cover damage due to improper handling, assembly, installation or maintenance.

THIS WARRANTY IS IN LIEU OF ALL OTHER WARRANTIES OF ANY KIND, EITHER EXPRESSED OR IMPLIED, INCLUDING, BUT NOT LIMITED TO, IMPLIED WARRANTIES OF MERCHANTABILITY AND FITNESS FOR A PARTICULAR PURPOSE.

TO THE MAXIMUM EXTENT PERMITTED BY APPLICABLE LAW, IN NO EVENT SHALL THE COMPANY BE LIABLE FOR ANY SPECIAL, INCIDENTAL, INDIRECT, OR CONSEQUENTIAL DAMAGES WHATSOEVER (INCLUDING, WITHOUT LIMITATION, DAMAGES FOR LOSS OF BUSINESS PROFITS, BUSINESS INTERRUPTION OR ANY OTHER PECUNIARY LOSS) ARISING OUT OF THE USE OF THE PRODUCTS PURCHASED, EVEN IF THE COMPANY HAS BEEN ADVISED OF THE POSSIBILITY OF SUCH DAMAGES. THE COMPANY'S LIABILITY TO THE PURCHASER (OR ANY OTHER PARTY) HEREUNDER, IF ANY, SHALL IN NO EVENT EXCEED THE PURCHASE PRICE OF THE PRODUCTS PAID TO THE COMPANY.

Corporate Headquarters

Corporate Voice 973-839-1011 - Fax 973-839-1976 / International Voice +1 973-839-8821 - Fax +1 973-839-4982
middleatlantic.com - info@middleatlantic.com

Middle Atlantic Canada

Voice 613-836-2501 - Fax 613-836-2690 / middleatlantic.ca - customerservicecanada@middleatlantic.ca

Factory Distribution

USA: NJ - CA - IL Canada: ON - BC

At Middle Atlantic Products we are always listening. Your comments are welcome.

Middle Atlantic Products is an ISO 9001 and ISO 14001 Registered Company.