

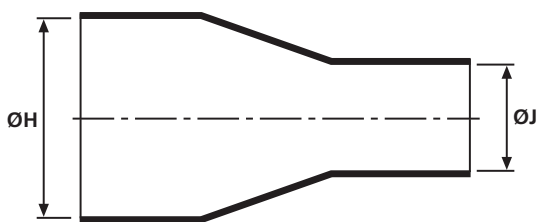
**Bottle Shapes**

- Helashrink 160 Series, without rib

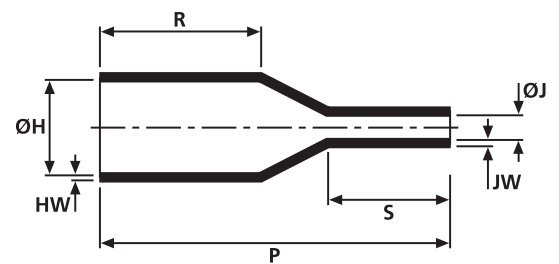
This style is a straight boot used for cable strain relief and environmental protection on many applications and is ideally suited where space is a premium.



162-1-G supplied / fully recovered.



a: Expanded form (supplied)



b: Fully recovered form (after heating)

Sizes and Type Table									
Type	ØH min. a	ØH max. b	ØJ min. a	ØJ max. b	P ± 10%	R ± 10%	HW ± 20%	JW ± 20%	S nom
162-1	22.0	14.2	9.0	4.1	44.0	15.7	1.8	1.8	16.0

All dimensions in mm. Subject to technical changes.

Combinations "On request"				
Adhesive	Material			
	B7	G	J	H
WM250	√	√	√	√
W8	√	√	√	√
W24	√	√	√	√
V9500	√	√	√	√
HMT200A	√	√	√	√
W21	-	-	-	√
Without Adhesive	√	√	√	√

Standard combinations	
Article-No.	Type
401-62180	162-1-G