

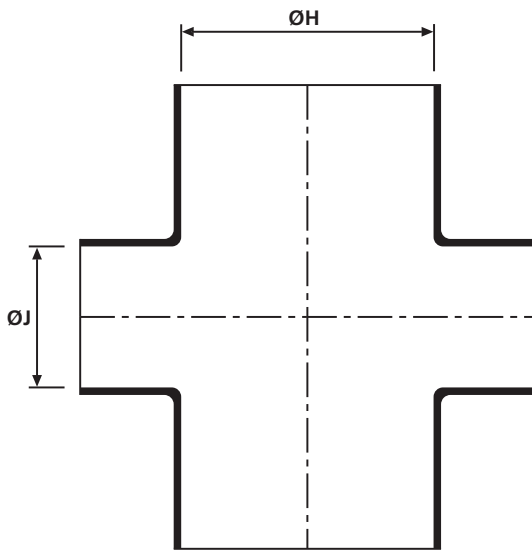
Right Angle Cross Shapes

• Helashrink 2000 Series, T-Joint

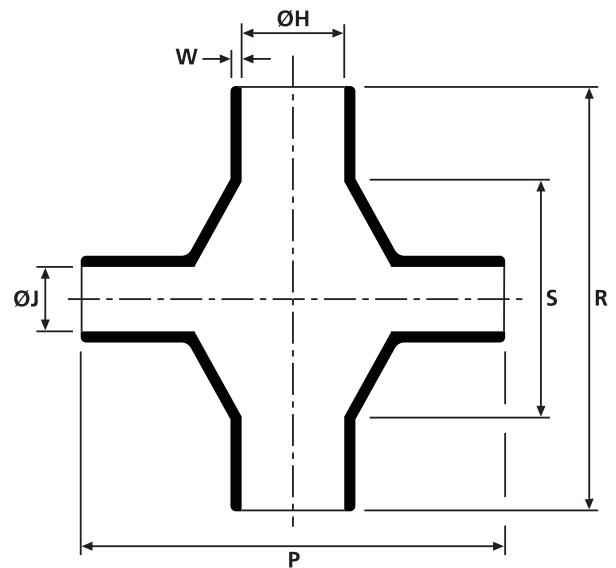
This style allows wires to be routed in four 90° directions, whilst providing strain relief and mechanical protection. Environmental sealing can be achieved when used in conjunction with one of our extensive range of adhesives.



2003-1 supplied / fully recovered.



a: Expanded form (supplied)



b: Fully recovered form (after heating)

Sizes and Type Table								
Type	ØH min. a	ØH max. b	ØJ min. a	ØJ max. b	R ± 10%	P ± 10%	S ± 10%	W ± 20%
2003-1	19.3	9.7	13.2	9.7	38.1	38.1	22.1	1.1

All dimensions in mm. Subject to technical changes.

Combinations "On request"				
Adhesive	Material			
	B7	G	J	H
WM250	√	√	√	√
W8	√	√	√	√
W24	√	√	√	√
V9500	√	√	√	√
HMT200A	√	√	√	√
W21	-	-	-	√
Without Adhesive	√	√	√	√

Standard combinations	
Article-No.	Type
420-03002	2003-1-G