

### 4-Way Outlet Shapes, Breakout Boots

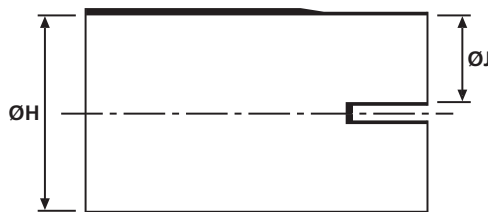
- Helashrink 400 Series, in line, low voltage

#### Features and Benefits

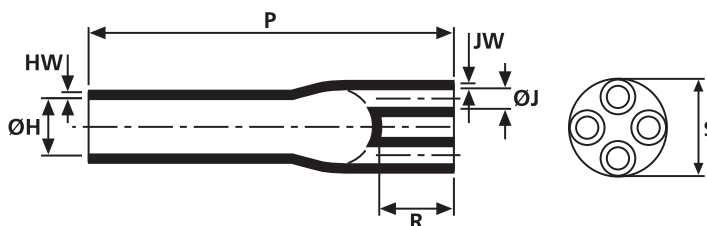
Branching parts are used for easy, time-saving insulation of the branch point of a cable where it is split into single wires. They are manufactured from a tough cross-linked flame retarded polyolefin, branching parts with hot melt adhesive also serve to relieve the mechanical tension in cable harnesses whilst providing excellent IP ratings.



442-1 supplied / fully recovered.



a: Expanded form (supplied)



b: Fully recovered form (after heating)

**Cable breakouts are available for 2, 3, 4, 5 and 6 core cables.**

Material Data	
Material	<b>Polyolefin, chemically cross linked (POX)</b>
Colour	<b>Black (BK)</b>
Shrink Ratio	<b>up to 3:1</b>
Dielectric Strength	<b>15 kV/mm</b>
Min. Shrink Temperature	<b>+135 °C</b>
Operating Temperature	<b>-55 °C to +100 °C</b>
Flammability	<b>ASTM D635</b>



Technical Table

Article-No.	Type	Recomm. application (mm <sup>2</sup> )		ØH min. a	ØH max. b	ØJ min. a	ØJ max. b	Recovered				
		from	to					P ±10%	R ±10%	S nom	HW ±20%	JW ±20%
404-42022	<b>442-1-B8W</b>	2.5	10.0	28.0	9.0	9.0	1.8	78.0	17.0	20.0	2.7	2.0
404-08022	<b>408-2-B8W2</b>	4.0	35.0	35.0	12.0	15.0	3.0	95.0	24.0	22.0	2.5	2.0
404-09021	<b>409-2-B8W2</b>	35.0	70.0	47.4	22.9	21.5	6.4	165.0	38.1	22.0	4.1	3.3
404-18020	<b>418-4-B8W2</b>	70.0	150.0	60.0	22.9	30.0	6.4	202.0	38.1	38.1	4.1	3.3
404-44010	<b>444-1-B8W2</b>	150	400.0	95.0	35.6	45.0	12.5	240.0	55.0	50.8	4.0	3.5

All Dimensions in mm, except for "mm<sup>2</sup>". Subject to technical changes.