





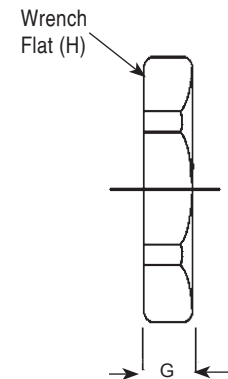
Accessories - Locking Nuts Nylon - NPT, Metric & PG Sizes



Locking Nuts: Nylon Black & Gray, V0 Rated UL 94

Part Numbers		Thread Type & Size	Dimensions in Inches (mm)	
-40°F to 212°F (-40°C to 100°C)	-40°F to 212°F (-40°C to 100°C)		G	H
Black	Gray		Thickness	Wrench Flats
		Page 55 for Thread Specs		
NN-09-BK	NN-09-GY	3/8" NPT	.28 (7)	.94 (24)
NN-13-BK	NN-13-GY	1/2" NPT	.24 (6)	1.06 (27)
NN-21-BK	NN-21-GY	3/4" NPT	.28 (7)	1.26 (32)
NN-29-BK	NN-29-GY	1" NPT	.28 (7)	1.57 (40)
NM-12-BK	NM-12-GY	M12 x 1.5	.20 (5)	.67 (17)
NM-16-BK	NM-16-GY	M16 x 1.5	.20 (5)	.87 (22)
NM-20-BK	NM-20-GY	M20 x 1.5	.24 (6)	1.06 (27)
NM-25-BK	NM-25-GY	M25 x 1.5	.26 (6.5)	1.26 (32)
NM-32-BK	NM-32-GY	M32 x 1.5	.28 (7)	1.61 (41)
NM-40-BK	NM-40-GY	M40 x 1.5	.28 (7)	1.97 (50)
NM-50-BK	NM-50-GY	M50 x 1.5	.31 (8)	2.36 (60)
NM-63-BK	NM-63-GY	M63 x 1.5	.31 (8)	2.95 (75)
NP-07-BK	NP-07-GY	PG 7	.20 (5)	.75 (19)
NP-09-BK	NP-09-GY	PG 9	.20 (5)	.87 (22)
NP-11-BK	NP-11-GY	PG 11	.20 (5)	.94 (24)
NP-13-BK	NP-13-GY	PG 13 / 13.5	.24 (6)	1.06 (27)
NP-16-BK	NP-16-GY	PG 16	.24 (6)	1.18 (30)
NP-21-BK	NP-21-GY	PG 21	.28 (7)	1.41 (36)
NP-29-BK	NP-29-GY	PG 29	.28 (7)	1.81 (46)
NP-36-BK	NP-36-GY	PG 36	.31 (8)	2.36 (60)
NP-42-BK	NP-42-GY	PG 42	.31 (8)	2.56 (65)
NP-48-BK	NP-48-GY	PG 48	.31 (8)	2.76 (70)


Nylon Locking Nuts

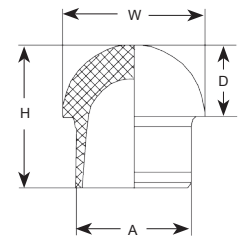


Ex-e Accessories - Mushroom Hole Plug Elastomer - NPT, Metric & PG Sizes



Hole Plug: Mushroom - NPT/Metric & PG Threads

Part Numbers	Thread Type & Size	Dimensions in Inches (mm)			
		A	D	H	W
	Page 55 for Thread Specs	Plug Diameter	Dome Height	Overall Height	Dome Width
PV-07-BX	PG 7 / M12 x 1.5	.25 (6.3)	.18 (4.5)	.45 (11.5)	.37 (9.5)
PV-09-BX	PG 9 / M16 x 1.5 / 3/8" NPT	.31 (7.8)	.22 (5.5)	.53 (13.5)	.43 (11)
PV-11-BX	PG 11 / M16-E	.39 (9.8)	.22 (5.5)	.57 (14.5)	.53 (13.5)
PV-13-BX	PG 13 / M20 x 1.5 / 1/2" NPT	.46 (11.8)	.32 (8)	.71 (18)	.63 (16)
PV-16-BX	PG 16 / 1/2" NPT-E / M20-E	.54 (13.8)	.35 (9)	.75 (19)	.73 (18.5)
PV-21-BX	PG 21 / M25 x 1.5 / 3/4" NPT	.70 (17.8)	.43 (11)	.87 (22)	.87 (22)
PV-29-BX	PG 29 / M32 x 1.5 / 1" NPT / 1 1/4" NPT	.98 (25)	.39 (10)	.98 (25)	1.14 (29)
PV-36-BX	PG 36 / M40 x 1.5 / 1 1/4" NPT	1.26 (32)	.43 (11)	1.10 (28)	1.50 (38)
PV-42-BX	PG 42 / M50 x 1.5	1.50 (38)	.47 (12)	1.18 (30)	1.69 (43)
PV-48-BX	PG 48 / M63 x 1.5	1.73 (44)	.47 (12)	1.18 (30)	1.93 (49)



Elongated/MZ (Clamp) versions available upon request!

* Note: Mushroom Plugs should only be used in cable glands with standard inserts.

Ex-d EXIOS Cable Glands
 Ex-d Nickel Plated Brass & Stainless Steel Glands
 Nylon Glands
 Ex-e Multi-Hole & Romex Glands
 Ex-e Nickel Plated Brass & Stainless Steel Glands
 Ex-e EMI / RFI Nickel Plated Brass Glands
 Ex-e Conduit & Fitting Systems
 Ex-e / Ex-d Accessories
 Technical Information