

Prototype

- 1) Validate
- 2) Optimize
- 3) Verify

> Project Review and Customer Approval

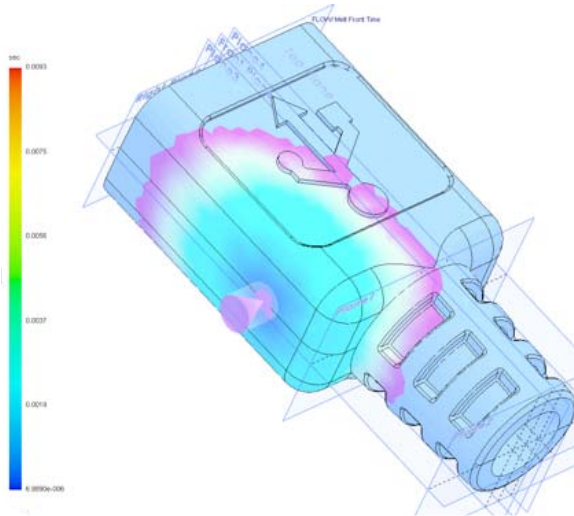
TOOLS

- Simulation
- Rapid Prototyping
- Process Failure Mode Effects Analysis (PFMEA)



"We validate the design and confirm it's the best solution for your needs."

Pilots + Clinical Trials



- 1) Pre-production Readiness
Initial Manufacturing Process Design
Initial Build
Optimize

- 2) Simulated Production Run
Validation

> Project Review and Customer Approval

TOOLS

- Value Stream Mapping
- Work Flow Analysis
- Process Mapping
- Poka Yoke



"We optimize the design for manufacturing, then create a manufacturing plan and process to deliver your product needs."