

Category 6A Field Terminable Plug Installation Procedure

1. General

- 1.1 These instructions detail the recommended installation procedures for terminating OCC's Category 6A Field Terminable Plug.

2. Contents

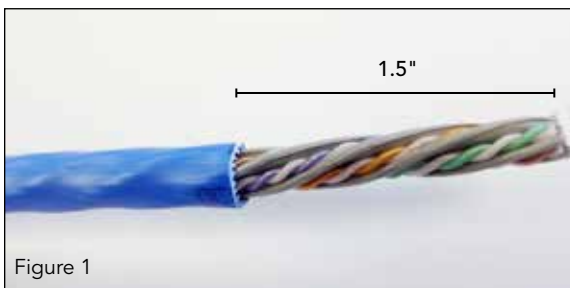
- 2.1 This package contains:
1 – Wire manager guide and assembly aid
1 – Plug housing
1 – Dust cover

3. Tools Required

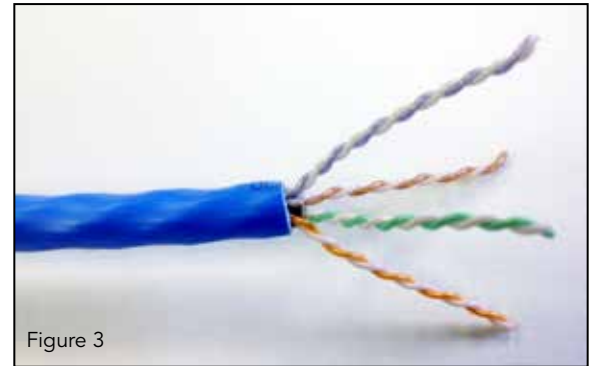
- 3.1 Tools required for this installation include:
1 – Wire stripper
1 – Diagonal cutter with flush cutting edge
1 – Parallel jaw pliers (OCC part number: FPJP)

4. Instructions

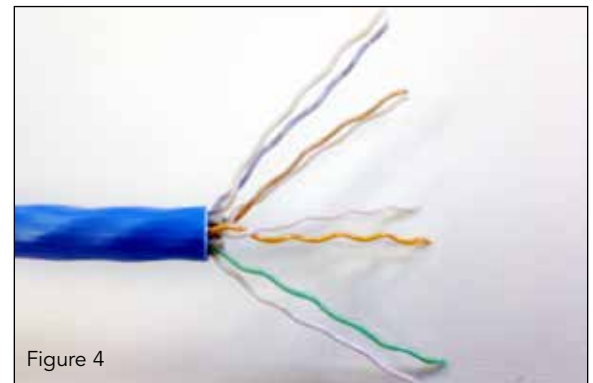
- 4.1 Strip 1.5" of jacket from UTP cable with wire stripper and cut star or tape separator. See Figure 1 and 2.



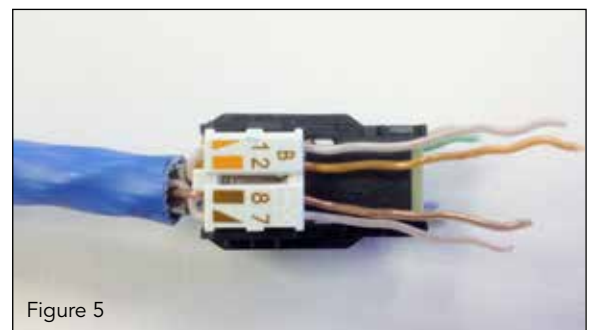
- 4.2 Sort pairs as shown for T568B wiring. See Figure 3.



- 4.3 Untwist pairs and smooth conductors to prepare for insertion into wire manager. Do not disturb the pair twist within the cable jacket. See Figure 4.



- 4.4 Insert conductors into the color-coded wire manager guide holes until the cable jacket is spaced within approximately 1/8". See Figure 5.
Note: Plug is color-coded for T568B wiring. For T568A wiring, swap orange and green pairs.



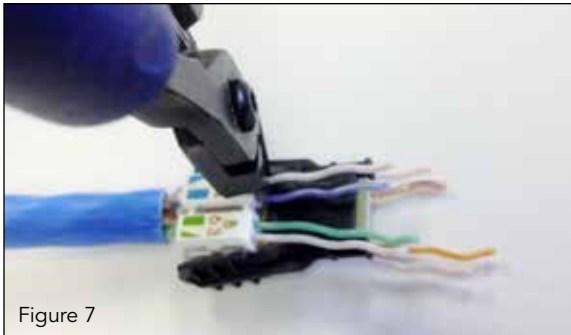
- 4.5 Squeeze wire manager with parallel jaw pliers to terminate conductors to IDC terminals. See Figure 6.



CAUTION: Do not use pliers. It is important to utilize parallel jaw pliers, as shown (recommended tool, OCC part# FPJP) to ensure proper termination.

NOTE: Jaws should be set for 3/8" spacing in closed position.

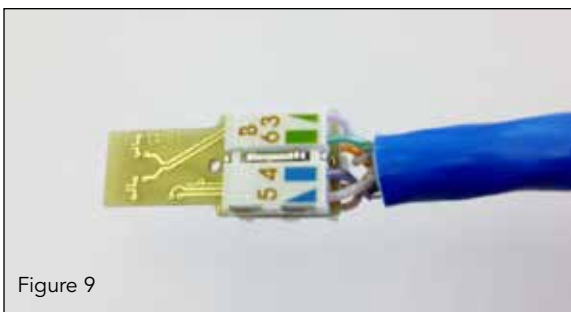
- 4.6 Trim excess wires using diagonal cutters with flush cutting edge. See Figure 7.



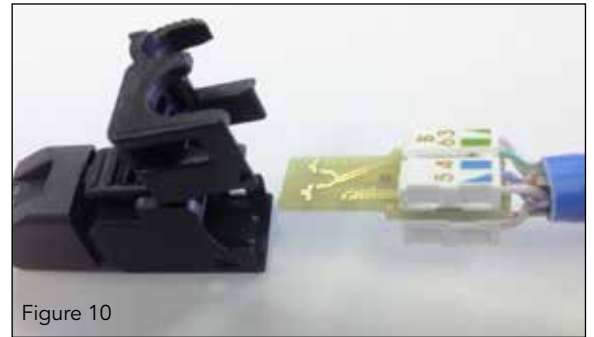
- 4.7 Remove wire manager assembly aid. See Figure 8.



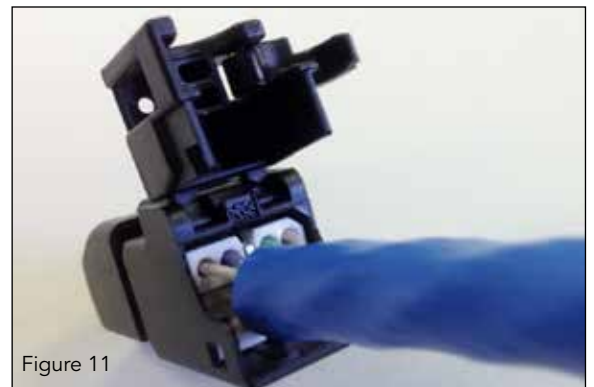
Figure 9 — Completed wire manager



- 4.8 Insert wire manager guide into plug housing as shown (blue/green side facing up). Use care to ensure wire manager is fully seated into plug housing. See Figure 10.



- 4.9 Close the hinged cover onto the connector base and squeeze to snap securely in place. See Figure 11.



- 4.10 Rotate strain relief to snap closed around cable. See Figure 12. **Note:** Leave the dust cover installed until plug is ready to use.



Figure 13 — Completed Field Terminable Plug

