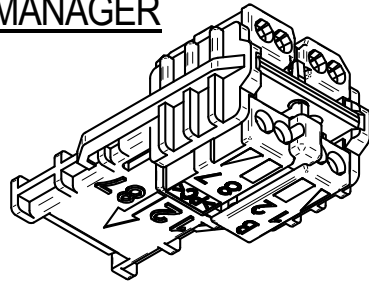
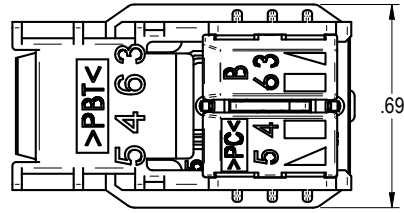
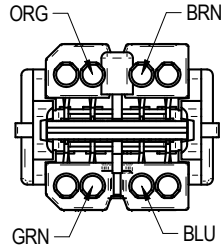
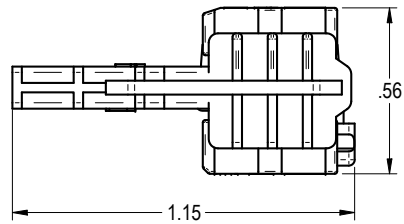


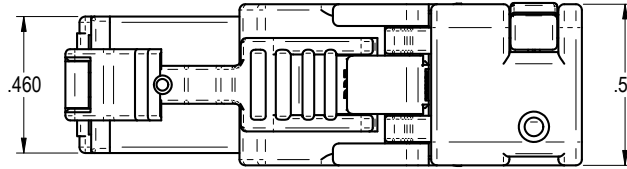
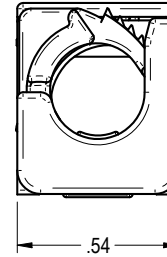
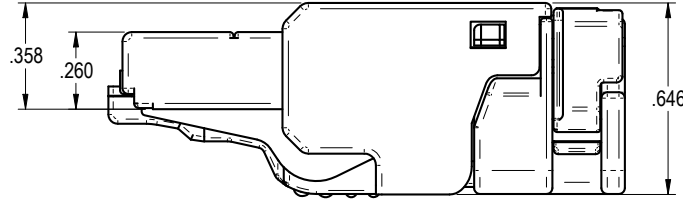
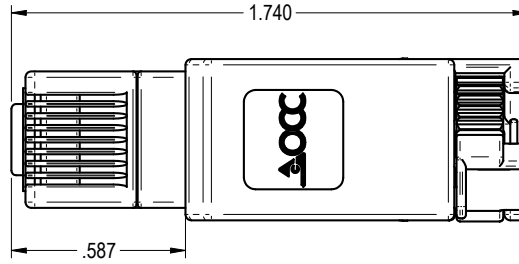
WIRE MANAGER



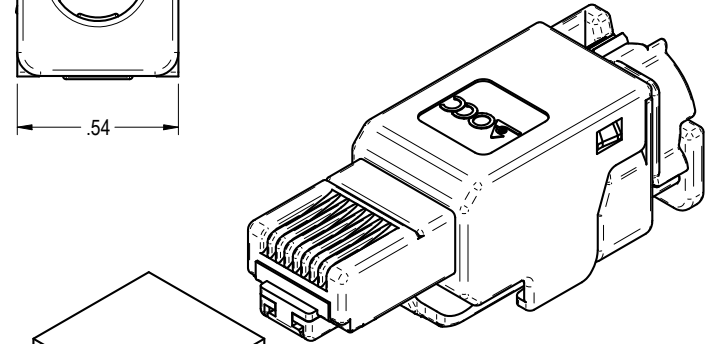
ISOMETRIC VIEW



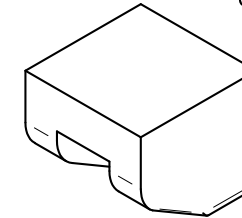
PIN ASSIGNMENT T568B
ACCORDING TO TIA 568-C.2



EXTERNAL HOUSING



ISOMETRIC VIEW



DUST CAP

"OPTICAL CABLE CORPORATION (OCC)
RESERVES THE RIGHT TO REVISE ANY
AND ALL SPECIFICATIONS."

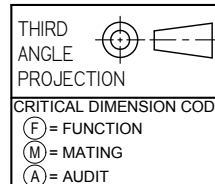
NOTES: UNLESS OTHERWISE SPECIFIED.

1. PRODUCT APPROVAL REQUIRES CERTIFICATION OF
COMPLIANCE TO E.U. RoHS DIRECTIVE 2002/95/EC

2. PERFORMANCE CHARACTERISTICS:

- CATEGORY 6A: ISO/IEC 11801:2010
- CATEGORY 6A: ANSI/TIA-568-C.2
- PLUG: IEC 60603-7-41
- LIFE: ≥ 750 MATING CYCLES
- CONTACT FINISH MATERIAL: HARD Au OVER Ni
- HOUSING MATERIAL: BLACK PC UL94-V0
- COPPER CONDUCTOR GAUGE: SOLID: 24 - 22 AWG
STRANDED: 24/7 - 22/7 AWG
- COPPER CONDUCTOR INSULATION DIAMETER: .043" - .063"
- OVERALL CABLE JACKET DIAMETER: .216" - .335"
- IDC TERMINATION CYCLES: ≤ 4 CYCLES
- TEMPERATURE RANGE: -40°C - 70°C
- POWER OVER ETHERNET PLUS (PoE+) IN ACCORDANCE
WITH IEEE 802.3at

UNCONTROLLED COPY



UNLESS OTHERWISE SPECIFIED
DIMENSIONS ARE IN INCHES.
TOLERANCES: FRACTIONS ±1/32"
ANGLES ±1/2°
3 PLACE DECIMALS ±.005"
2 PLACE DECIMALS ±.01"

MATERIAL
SEE NOTES

FINISH
SEE NOTES

OCCUFP6A	PLUG, CAT6A, T568B, UTP, FIELD TERMINABLE
OCC PART NO.	DESCRIPTION
THIS DRAWING AND THE DESIGN SHOWN ARE THE PROPERTY OF OPTICAL CABLE CORPORATION AND MAY NOT BE USED AS THE BASIS FOR MANUFACTURE OR SALE WITHOUT SPECIFIC WRITTEN PERMISSION OF OPTICAL CABLE CORPORATION.	
DRAWN D.A.HOLBERT	DATE 6/11/13
CHECKED S.PORACH	DATE 10/15/13
ENGINEER J.YANIK	DATE 6/11/13
APPROVED J.CALLOWAY	DATE 8/6/15
PREVIOUS DWG	
NEXT DWG	FILENAME C111579B.DFT
DWG TITLE PLUG, CAT 6A, T568B, UTP, FIELD TERMINABLE, OCC	
SIZE B	DWG NO. C111579
SCALE: NONE	SHEET 1 OF 1
REV B	



33 Superior Way
Swannanoa, NC 28778
Phone: 828-298-2260
Fax: 828-298-2487
www.occfiber.com