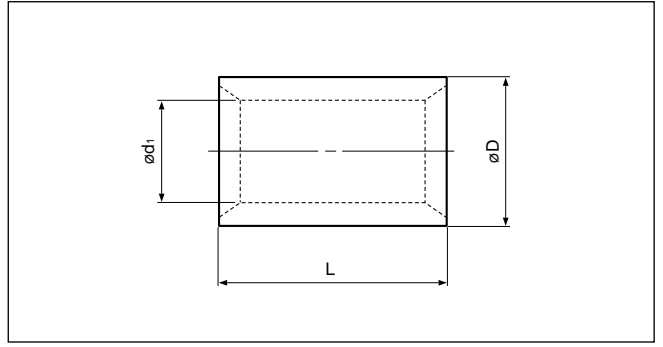


Solderless splices

PARALLEL

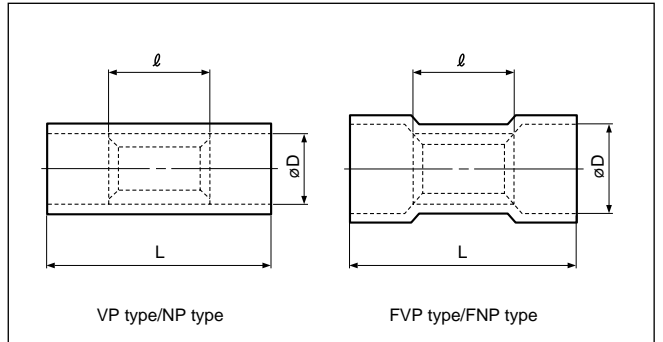
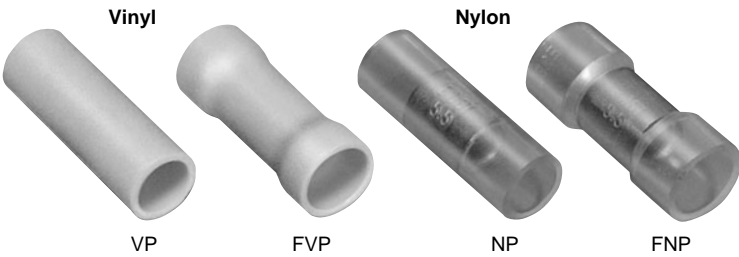


Non-insulated

Certificate No.: E42024 LR20812 JQ0607002

Applicable Wire AWG#(mm ²)	Part No.	Standard	Dimensions mm (in.)			Tool No.											Qty/box								
			L	ø D	ø d ₁	YHT-2210	YHT-8S	YA-1	YA-2	YA-4	YA-5	YPT-60N	YPT-150-1	BCT-0514L	BCT-860N	BCT-8150		YET-60-1	YET-150-1	YET-300-1	YET-300N	YET-60-1			
22 to 16 (0.25 to 1.65)	P-1.25		8.0 (.315)	3.3 (.130)	1.7 (.067)	0	0	0	0	0	0	0	0	0	0	0	0	0	0	0	0	0	0	1,000	
16 to 14 (1.04 to 2.63)	P-2		8.0 (.315)	4.1 (.161)	2.3 (.091)	0	0	0	0	0	0	0	0	0	0	0	0	0	0	0	0	0	0		
12 to 10 (2.63 to 6.64)	P-5.5		8.5 (.335)	5.4 (.213)	3.4 (.134)	0	0	0	0	0	0	0	0	0	0	0	0	0	0	0	0	0	0		
8 (6.64 to 10.52)	P-8			9.5 (.374)	7.0 (.276)	4.5 (.177)	0	0	0	0	0	0	0	0	0	0	0	0	0	0	0	0	0	500	
6 (10.52 to 16.78)	P-14			11.0 (.433)	8.9 (.350)	5.8 (.228)	0	0	0	0	0	0	0	0	0	0	0	0	0	0	0	0	0		0
4 (16.78 to 26.66)	P-22			13.5 (.531)	11.3 (.445)	7.7 (.303)	0	0	0	0	0	0	0	0	0	0	0	0	0	0	0	0	0	0	200
2 (26.66 to 42.42)	P-38			16.5 (.650)	13.2 (.520)	9.4 (.370)	0	0	0	0	0	0	0	0	0	0	0	0	0	0	0	0	0	0	
1/0 (42.42 to 60.57)	P-60				19.0 (.748)	15.3 (.602)	11.4 (.449)	0	0	0	0	0	0	0	0	0	0	0	0	0	0	0	0	0	100
2/0 (60.57 to 76.28)	P-70				19.0 (.748)	17.5 (.689)	13.3 (.524)	0	0	0	0	0	0	0	0	0	0	0	0	0	0	0	0	0	
3/0 (76.28 to 96.3)	P-80				19.5 (.768)	19.5 (.768)	14.5 (.571)	0	0	0	0	0	0	0	0	0	0	0	0	0	0	0	0	0	0
4/0 (96.3 to 117.2)	P-100	20.0 (.787)			22.1 (.870)	16.4 (.646)	0	0	0	0	0	0	0	0	0	0	0	0	0	0	0	0	0	0	
250 to 300MCM (117.2 to 152.05)	P-150				27.0(1.063)	26.4(1.039)	19.5 (.768)	0	0	0	0	0	0	0	0	0	0	0	0	0	0	0	0	0	25
350MCM (152.05 to 192.6)	P-180				28.5(1.122)	28.5(1.122)	21.0 (.827)	0	0	0	0	0	0	0	0	0	0	0	0	0	0	0	0	0	
400MCM (192.6 to 242.27)	P-200		32.0(1.260)		32.4(1.276)	24.0 (.945)	0	0	0	0	0	0	0	0	0	0	0	0	0	0	0	0	0	0	20
N.A. (250)	P-250		32.0(1.260)		35.0(1.378)	26.0(1.024)	0	0	0	0	0	0	0	0	0	0	0	0	0	0	0	0	0	0	
600 to 650MCM (242.27 to 325)	P-325				37.0(1.457)	37.0(1.457)	28.0(1.102)	0	0	0	0	0	0	0	0	0	0	0	0	0	0	0	0	0	10

Note:1) Products with the JIS mark conform to JIS C2806.
 2) "Applicable Wires" indicates the total cross-sectional area.
 3) Delivery lead times may vary depending on the product. Contact JST for details.



Vinyl or nylon insulated

Certificate No.: E42024 LR20812

Applicable Wire AWG#(mm ²)	Part No.		Standard	Dimensions mm (in.)			Color	Tool No.						Qty/box	
	Vinyl	Nylon		L	l	ø D		YNT-2216	YNT-1614	YNT-1210S	YA-1	YA-2	YA-4	BCT-0514L	Vinyl
22 to 16 *(0.25 to 1.65)	VP-1.25	NP-1.25		16.0 (.630)	8.0 (.315)	3.2 (.126)	0	0	0	0	0	0	1,000		
	FVP-1.25	FNP-1.25				4.0 (.157)									
16 to 14 (1.04 to 2.63)	VP-2	NP-2		16.0 (.630)	8.0 (.315)	3.9 (.154)	0	0	0	0	0	1,000			
	FVP-2	FNP-2				4.5 (.177)						1,000	500		
12 to 10 (2.63 to 6.64)	VP-5.5	NP-5.5		20.5 (.807)	8.5 (.335)	5.4 (.213)	0	0	0	0	0	500			
	FVP-5.5	FNP-5.5				6.8 (.268)						500	250		

Note:1) *The crimping will be more secure if the total cross-sectional area of the wire is at least 0.5 mm².
 Examples: If the cross-sectional area of the wire is 0.3mm², fold the wire in two when crimping the terminal.
 If the cross-sectional area of the wire is 0.5mm², crimp the terminal onto the wire as it is.
 2) "Applicable Wires" indicates the total cross-sectional area.
 3) Delivery lead times may vary depending on the product. Contact JST for details.

Wire combination table for parallel splices specified by UL

AWG#		↓ Number of wires																		P-1.25					
22	2	2	2	1	1	1	1	1	1	1	1	1	1	1	1	1	1	1	1	1	1	1	1	1	1
20	1			2	1	1								3	2	2	1	1							
18		1			1		1								1		1		2						
16									1									1							
AWG#		↓ Number of wires																		P-2					
22	2	2	2	2	1	1	1	1	1	1	1	1	1	1	1	1	1	1	1	1	1	1	1	1	1
20	1				2	1	1	1	1								3	2	2	2	1	1	1	1	1
18		1				1							2	1	1			1			2	1	1		3
16			1				1					1			1			1				1	2	1	1
AWG#		↓ Number of wires																		P-5.5					
18	3	2	2	1	1	1	1																		
16	1	1		1				2	1	1	1														
14					1				1							2									
12						1																			
10							1							1											
AWG#		↓ Number of wires																		P-8					
16		1																							
14				1																					
12	2				1																				
10		1	1	1																					
AWG#		↓ Number of wires																		P-14					
14		1																							
12				1																					
10	2																								
8		1	1																						
AWG#		↓ Number of wires																		P-22					
10		1																							
8	2			1																					
6		1	1																						
AWG#		↓ Number of wires																		P-38					
8		1																							
6	2																								
4		1																							
AWG#		↓ Number of wires																		P-60					
6		1																							
4	2																								
2		1																							
AWG#		↓ Number of wires																		P-70					
6		1																							
2	2																								
1/0		1																							
AWG#		↓ Number of wires																		P-80					
4	1																								
2/0	1																								
AWG#		↓ Number of wires																		P-100					
2	1																								
2/0	1																								
AWG#		↓ Number of wires																		P-150					
2		1																							
1/0				1	1																				
2/0	2			1																					
3/0		1		1																					
AWG#		↓ Number of wires																		P-180					
1/0		1																							
2/0				1	1																				
3/0	2				1																				
4/0		1	1																						
AWG#		↓ Number of wires																		P-200					
2/0				1																					
3/0				1																					
4/0	2			1																					
250/MCM				1																					
AWG#		↓ Number of wires																		P-325					
4/0	1																								
250/MCM				2																					
300/MCM	1																								

Note: 1) The combinations indicated in the table conform to UL standards only.