



Network Infrastructure for the Enterprise

Preferred Parts – Korea

PANDUIT™

Network Infrastructure for the Enterprise

Today's enterprise IP networks support ever-expanding converged applications for voice, data, and video, as well as functions such as intelligent lighting, security, safety systems, and more.

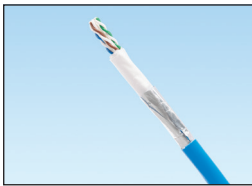
Panduit Enterprise Networks provide the industry's most comprehensive and holistic portfolio of products and services that enable sustainable, energy-efficient enterprises. Innovative design features provide easy installation, reduced maintenance costs, and improved network reliability and flexibility.

This catalog features the most common offering for an enterprise physical infrastructure deployment. For the complete enterprise offering, please contact your local Panduit representative or visit us at <http://www.panduit.com/en/solutions/enterprise-solutions>.

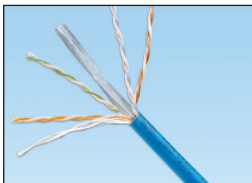
Table of Contents

Copper Cable.....	3	Fibre Pigtail Sets.....	8
RJ45 Jack Module.....	3	Cabinet.....	8
Modular Plugs.....	3	Racks, Shelves and Accessories.....	8
Patch Panels, Kits and Accessories.....	4	Cable Managers.....	9
RJ45 Patch Cords.....	4 – 5	Power Distribution Unit.....	9
Faceplate.....	5	Blanking Panels.....	9
Surface Mount Box.....	6	Consolidation Point.....	10
Fibre Optic Cable – Indoor/Outdoor.....	6	Labeling.....	10
Fibre Connectors and Patch Cords.....	6	Security Devices.....	10
Fibre Enclosures.....	7	Tools.....	11
Fibre Adapter Module and Panels.....	7	PanView iQ™.....	11
		SmartZone™.....	11

Copper Cable



PUC6AM04BU-CEG



PUC6C04BU-C

Part Number	Description	UOM	MOQ
Unshielded			
PUC6ASD04BU-EG	Category 6A U/UTP cable, 26 AWG, Blue, CM, 305m (60m max PL).	Reel	18
PUC6AM04BU-CEG	Category 6A advanced MaTriX U/UTP cable, 23 AWG, Blue, CM, 305m.	Reel	18
PUC6C04BU-C	Category 6 U/UTP cable, 24 AWG, Blue, CM, 305m.	Box	20
PUD6C2804BU-CE	Category 6 U/UTP cable, 28 AWG, Blue, CM, 305m (55M max PL).	Box	30
PUC5504IGY	Category 5e U/UTP cable, 24 AWG, Gray, CM, 305m.	Box	36

Shielded			
PFL6X04WH-CEG	Category 6A F/UTP cable, 23 AWG, White, LSZH (60332-1), 305m.	Reel	12
PFC6004BU-G	Category 6 F/UTP cable, 23 AWG, Blue, CM, 305m.	Reel	27

Note: F/UTP means Foil around Unshielded Twisted Pairs = shielded cable.
LSZH means Low Smoke Zero Halogen.

RJ45 Jack Module



CJ6X88TGBL



CJS688TGY



CJRCAPBU

Part Number	Description	Std. Pkg. Qty.	Std. Ctn. Qty.
Unshielded			
CJ6X88TGBL	Category 6A RJ45 UTP Mini-Com™ Jack, Black.	1	50
CJ6X88TGBU	Category 6A RJ45 UTP Mini-Com™ Jack, Blue.	1	50
CJ6X88TGIW	Category 6A RJ45 UTP Mini-Com™ Jack, International White.	1	50

CJ688TGBL	Category 6 RJ45 UTP Mini-Com™ Jack, Black.	1	50
CJ688TGBU	Category 6 RJ45 UTP Mini-Com™ Jack, Blue.	1	50
CJ688TGIW	Category 6 RJ45 UTP Mini-Com™ Jack, International White.	1	50

CJT688TGBL	Category 6 RJ45 UTP 28 AWG Mini-Com™ Jack, Black.	1	50
CJT688TGBU	Category 6 RJ45 UTP 28 AWG Mini-Com™ Jack, Blue.	1	50
CJT688TGIW	Category 6 RJ45 UTP 28 AWG Mini-Com™ Jack, International White.	1	50

CJ5E88TGBL	Category 5E RJ45 UTP Mini-Com™ Jack, Black.	1	50
CJ5E88TGBU	Category 5E RJ45 UTP Mini-Com™ Jack, Blue.	1	50
CJ5E88TGIW	Category 5E RJ45 UTP Mini-Com™ Jack, International White.	1	50

Shielded			
CJS6X88TGY	Category 6A RJ45 shielded Mini-Com™ Jack, Black.	1	50
CJS688TGY	Category 6 RJ45 shielded Mini-Com™ Jack, Black.	1	50

Termination Caps			
CJRCAPBU	Right angle termination cap for CJ6X88TG.	10	100
CJRCAPIW	Right angle termination cap for CJ688TG.	10	100

Contact Panduit Customer Service for other colours and bulk packs.

Modular Plugs*



MP588



SP6X88SD

Part Number	Description	Std. Pkg. Qty.	Std. Ctn. Qty.
MP588-C	8-position, 8-wire modular plug, for use with 24 AWG, Category 5e, UTP copper cable.	100	1000
SP688-C	8-position, 8-wire modular plug, for use with 24 AWG, Category 6, UTP copper cable.	100	100
SP628-C	8-position, 8-wire modular plug, for use with 28 AWG, Category 6, UTP copper cable.	100	100
SP6X88-C	8-position, 8-wire modular plug, for use with 23 AWG TX6A 10Gig UTP Copper Cable (PU*6A04).	100	100
SP6X88SD-C	8-position, 8-wire modular plug, for use with 23 AWG TX6A-SD 10Gig UTP Copper Cable (PU*6ASD04).	100	100

*See page 11 for modular plug tool.

Patch Panels, Kits, and Accessories



CPPL24WBLY



CPPLA24WBLY



CPP48HDWBLY



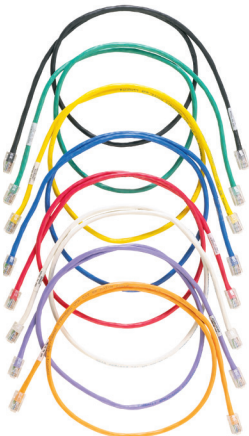
CPPA48HDWBLY



SRB19BLY

Part Number	Description	Std. Pkg. Qty.	Std. Ctn. Qty.
Modular			
CPPL24WBLY	24-port patch panel with labels, with six CFFPL4 faceplates.	1	10
CPPLA24WBLY	24-port angled patch panel with labels, with six CFFPL4 faceplates.	1	10
CPPL48WBLY	48-port angled patch panel with labels, with twelve CFFPL4 faceplates.	1	10
CPPLA48WBLY	48-port patch panel with labels, with twelve CFFPL4 faceplates.	1	10
CPP48HDWBLY	48-port high-density patch panel, with rear-mounted faceplates.	1	10
CPPA48HDWBLY	48-port angled high-density patch panel, with rear-mounted faceplates.	1	10
CP24BLY	24-port all-metal shielded patch panel.	1	10
CPA24BLY	24-port angled all-metal shielded patch panel.	1	10
Strain Relief			
SRB19BLY	Strain relief bar.	1	10

RJ45 Patch Cords



UTP6ASD*M**

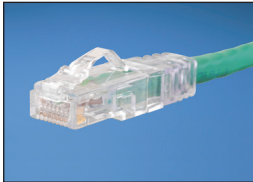


STP6C*

Part Number	Description	Std. Pkg. Qty.	Std. Ctn. Qty.
Category 6A			
UTP6ASD1M	Category 6A 26 AWG patch cord, CM, White, 1m.	1	10
UTP6ASD1MBU	Category 6A 26 AWG patch cord, CM, Blue, 1m.	1	10
UTP6ASD2M	Category 6A 26 AWG patch cord, CM, White, 2m.	1	10
UTP6ASD2MBU	Category 6A 26 AWG patch cord, CM, Blue, 2m.	1	10
UTP6ASD3M	Category 6A 26 AWG patch cord, CM, White, 3m.	1	10
UTP6ASD3MBU	Category 6A 26 AWG patch cord, CM, Blue, 3m.	1	10
UTP6ASD5M	Category 6A 26 AWG patch cord, CM, White, 5m.	1	10
UTP6ASD5MBU	Category 6A 26 AWG patch cord, CM, Blue, 5m.	1	10
UTP28X1M	Category 6A 28 AWG patch cord, CM/LSZH, White, 1m.	1	10
UTP28X1MBU	Category 6A 28 AWG patch cord, CM/LSZH, Blue, 1m.	1	10
UTP28X2M	Category 6A 28 AWG patch cord, CM/LSZH, White, 2m.	1	10
UTP28X2MBU	Category 6A 28 AWG patch cord, CM/LSZH, Blue, 2m.	1	10
Category 6A Shielded			
STP6C1MBU	Category 6A F/UTP patch cord, CM/LSZH, Blue, 1m.	1	10
STP6C1MIG	Category 6A F/UTP patch cord, CM/LSZH, International Gray, 1m.	1	10
STP6C2MBU	Category 6A F/UTP patch cord, CM/LSZH, Blue, 2m.	1	10
STP6C2MIG	Category 6A F/UTP patch cord, CM/LSZH, International Gray, 2m.	1	10
STP6C3MBU	Category 6A F/UTP patch cord, CM/LSZH, Blue, 3m.	1	10
STP6C3MIG	Category 6A F/UTP patch cord, CM/LSZH, International Gray, 3m.	1	10
STP6C5MBU	Category 6A F/UTP patch cord, CM/LSZH, Blue, 5m.	1	10
STP6C5MIG	Category 6A F/UTP patch cord, CM/LSZH, International Gray, 5m.	1	10

Contact Customer Service for other colours and lengths.

RJ45 Patch Cords (continued)



UTPSP*

Part Number	Description	Std. Pkg. Qty.	Std. Ctn. Qty.
Category 6			
UTPSP1MY	Category 6 UTP patch cord, CM, White, 1m.	1	10
UTPSP1MBUY	Category 6 UTP patch cord, CM, Blue, 1m.	1	10
UTPSP2MY	Category 6 UTP patch cord, CM, White, 2m.	1	10
UTPSP2MBUY	Category 6 UTP patch cord, CM, Blue, 2m.	1	10
UTPSP3MY	Category 6 UTP patch cord, CM, White, 3m.	1	10
UTPSP3MBUY	Category 6 UTP patch cord, CM, Blue, 3m.	1	10
UTPSP5MY	Category 6 UTP patch cord, CM, White, 5m.	1	10
UTPSP5MBUY	Category 6 UTP patch cord, CM, Blue, 5m.	1	10

Category 6 28 AWG

UTP28SP8INBU	Category 6 UTP 28 AWG patch cord, CM/LSZH, White, 200mm.	1	10
UTP28SP1M	Category 6 UTP 28 AWG patch cord, CM/LSZH, White, 1m.	1	10
UTP28SP1MBU	Category 6 UTP 28 AWG patch cord, CM/LSZH, Blue, 1m.	1	10
UTP28SP2M	Category 6 UTP 28 AWG patch cord, CM/LSZH, White, 2m.	1	10
UTP28SP2MBU	Category 6 UTP 28 AWG patch cord, CM/LSZH, Blue, 2m.	1	10
UTP28SP3M	Category 6 UTP 28 AWG patch cord, CM/LSZH, White, 3m.	1	10
UTP28SP3MBU	Category 6 UTP 28 AWG patch cord, CM/LSZH, Blue, 3m.	1	10
UTP28SP5M	Category 6 UTP 28 AWG patch cord, CM/LSZH, White, 5m.	1	10
UTP28SP5MBU	Category 6 UTP 28 AWG patch cord, CM/LSZH, Blue, 5m.	1	10

Category 5e

UTPCH1MY	Category 5e patch cord, CM, White, 1m.	1	10
UTPCH1MBUY	Category 5e patch cord, CM, Blue, 1m.	1	10
UTPCH2MY	Category 5e patch cord, CM, White, 2m.	1	10
UTPCH2MBUY	Category 5e patch cord, CM, Blue, 2m.	1	10
UTPCH3MY	Category 5e patch cord, CM, White, 3m.	1	10
UTPCH3MBUY	Category 5e patch cord, CM, Blue, 3m.	1	10



UTPCH*

Contact Customer Service for other colours and lengths.

Faceplate



CFP2IW



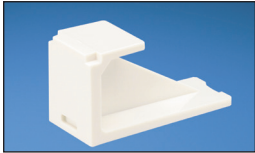
CFP86S2IWY

Part Number	Description	Std. Pkg. Qty.	Std. Ctn. Qty.
CFP1IW	1-port classic vertical faceplate, Off White.	1	10
CFP2IW	2-port classic vertical faceplate, Off White.	1	10
CFPE1IWY	1-port executive vertical faceplate with labels, Off White.	1	10
CFPE2IWY	2-port executive vertical faceplate with labels, Off White.	1	10
CFP86S2IWY	2-port 86x86 sloped faceplate, Off White.	1	10
CFP86S4IWY	4-port 86x86 sloped faceplate, Off White.	1	10
CFPUKS2SIWY	2-port 86x86 sloped shuttered faceplate, Off White.	1	10
CFFPL4WH	4-port furniture faceplate, standard opening, Off White.	1	10

Surface Mount Box



CBX2IW-AY



CMBIW-X

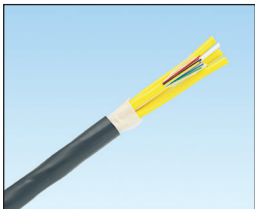
Part Number	Description	Std. Pkg. Qty.	Std. Ctn. Qty.
CBX1IW-A	1-port surface mount box, Off White.	1	10
CBX2IW-A	2-port surface mount box, Off White.	1	10
CBX4IW-A	4-port surface mount box, Off White.	1	10
CBXF6IW-A	6-port surface mount box with built-in fiber spool, Off White.	1	10
CBXF12IW-A	12-port surface mount box with built-in fiber spool, Off White.	1	10

Blank Modules

CMBBL-X	Mini-Com™ 1-port blank module, Black.	10	50
CMBIW-X	Mini-Com™ 1-port blank module, Off White.	10	50

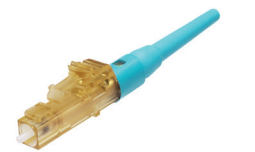
Contact Panduit Customer Service for other colours.

Fibre Optic Cable – Indoor/Outdoor



Part Number	Description	UOM	MOQ
FLKRX06	6-fibre OM3 10 GbE multimode riser all-dielectric cable with tight buffered fibres.	Metre	1000
FLKRX12	12-fibre OM3 10 GbE multimode riser all-dielectric cable with tight buffered fibres.	Metre	1000
FLKRX24	24-fibre OM3 10 GbE multimode riser all-dielectric cable with tight buffered fibres.	Metre	1000
FLKR906	6-fibre OS2 singlemode riser all-dielectric cable with tight buffered fibres.	Metre	1000
FLKR912	12-fibre OS2 singlemode riser all-dielectric cable with tight buffered fibres.	Metre	1000
FLKR924	14-fibre OS2 singlemode riser all-dielectric cable with tight buffered fibres.	Metre	1000

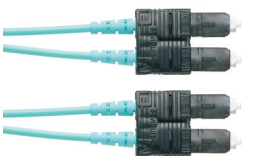
Fibre Connectors and Patch Cords



FLCSCXAQY



FSCSCBU



FX23RSNSNSNM***



FX2ERLNLNSNM***

Part Number	Description	Std. Pkg. Qty.	Std. Ctn. Qty.
OptiCam™ Pre-Polished Connectors*			
FLCSCXAQY	LC 50/125µm OM3/OM4 multimode simplex connector, Aqua boot.	1	10
FLCSCBUY	LC 9/125µm singlemode simplex fiber optic connector for 900µm.	1	10
FSCSCXAQ	SC 50/125µm OM3/OM4 multimode simplex connector, Aqua boot.	1	10
FSCSCBU	SC 9/125µm singlemode simplex connector, Blue boot.	1	10

Fibre Patch Cords

FX23RSNSNSNM001	SC 50/125µm OM3, 3mm jacket duplex patch cord, 1m.	1	10
FX23RSNSNSNM002	SC 50/125µm OM3, 3mm jacket duplex patch cord, 2m.	1	10
FX23RSNSNSNM003	SC 50/125µm OM3, 3mm jacket duplex patch cord, 3m.	1	10
FX23RSNSNSNM005	SC 50/125µm OM3, 3mm jacket duplex patch cord, 5m.	1	10
F923RSNSNSNM001	SC 9/125µm OS2, 3mm jacket duplex patch cord, 1m.	1	10
F923RSNSNSNM002	SC 9/125µm OS2, 3mm jacket duplex patch cord, 2m.	1	10
F923RSNSNSNM003	SC 9/125µm OS2, 3mm jacket duplex patch cord, 3m.	1	10
F923RSNSNSNM005	SC 9/125µm OS2, 3mm jacket duplex patch cord, 5m.	1	10
FX2ERLNLNSNM001	LC 50/125µm OM3, 1.6mm jacket duplex patch cord, 1m.	1	10
FX2ERLNLNSNM002	LC 50/125µm OM3, 1.6mm jacket duplex patch cord, 2m.	1	10
FX2ERLNLNSNM003	LC 50/125µm OM3, 1.6mm jacket duplex patch cord, 3m.	1	10
FX2ERLNLNSNM005	LC 50/125µm OM3, 1.6mm jacket duplex patch cord, 5m.	1	10
F92ERLNLNSNM001	LC 9/125µm OS2, 1.6mm jacket duplex patch cord, 1m.	1	10
F92ERLNLNSNM002	LC 9/125µm OS2, 1.6mm jacket duplex patch cord, 2m.	1	10
F92ERLNLNSNM003	LC 9/125µm OS2, 1.6mm jacket duplex patch cord, 3m.	1	10
F92ERLNLNSNM005	LC 9/125µm OS2, 1.6mm jacket duplex patch cord, 5m.	1	10

*See page 11 for OptiCam™ Tool Kit.

Contact Panduit Customer Service for other lengths.

Fibre Enclosures



FMT1



FCE1U



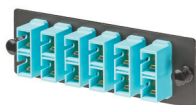
FOSMF

Part Number	Description	Std. Pkg. Qty.	Std. Ctn. Qty.
FMT1	Rack-mount fibre tray, 1 RU. Requires 24-port modular patch panel and Mini-Com™ Adapter Modules.	1	1
FMT1A	Rack-mount fibre tray, angled, 1 RU. Requires 24-port modular patch panel and Mini-Com™ Adapter Modules.	1	1
CFAPPBL1	Flat fibre patch panel. Holds up to four FAP or FMP adapter panels.	1	1
CFAPPBL1A	Angled fibre patch panel. Holds up to four FAP or FMP adapter panels.	1	1
FCE1U	Rack-mount fibre enclosure, 1 RU. Accepts four fibre adapter panels or QuickNet™ Cassettes.	1	1
FRME4	Rack-mount fibre enclosure, 4 RU. Accepts twelve fibre adapter panels or QuickNet™ Cassettes.	1	1
FWME2	Wall mount enclosure accepts two fibre adapter panels or QuickNet™ Cassettes.	1	1
FOSMF	Fibre optic splice module, 24 fusion, for rack-mount enclosure.	1	1
FSC24	Fibre splice chip accommodates and protects up to 24 fusion splices, suits wall-mount or rack-mount enclosure.	1	1
FOSP61-C	Fibre splice protector.	100	100

Fibre Adapter Module and Panels



CMDAQSCZBL



FAP6WAQDSC



FXTRL7N7NANM005



FC2XN-12-10AS

Part Number	Description	Std. Pkg. Qty.	Std. Ctn. Qty.
Fibre Adapter Modules			
CMDAQSCZBL	SC duplex (Aqua) adapter (Black) Mini-Com™ Module Assembly, zirconia.	1	10
CMDBUSCZBU	SC duplex (Blue) adapter (Blue) Mini-Com™ Module Assembly, zirconia.	1	10
CMDSAQLCZBL	Duplex LC Sr./Sr. (Aqua) adapter (Black) Mini-Com™ Module Assembly, zirconia.	1	10
CMDSLCZBU	Duplex LC Sr./Sr. (Blue) adapter (Blue) Mini-Com™ Module Assembly, zirconia.	1	10
Fibre Adapter Panels			
FAP6WAQDSC	Fibre adapter panel with six SC duplex (Aqua) adapters, phosphor bronze.	1	10
FAP6WBUDSCZ	Fibre adapter panel with six SC duplex (Blue) adapters, zirconia.	1	10
FAP6WAQDLCZ	Fibre adapter panel with six LC duplex (Aqua) adapters, zirconia.	1	10
FAP6WAQDLC	Fibre adapter panel with six LC duplex (Aqua), phosphor bronze.	1	10
FAP12WAQDLC	Fibre adapter panel with twelve LC duplex (Aqua), phosphor bronze.	1	10
FAP6WBUDLCZ	Fibre adapter panel with six LC duplex (Blue) adapters, zirconia.	1	10
FAP12WBUDLCZ	Fibre adapter panel with twelve LC duplex (Blue) adapters, zirconia.	1	10
QuickNet™ MPO Cassettes and Interconnect Cables			
FXTRL7N7NANM005	12 core PanMPO™ Interconnect, OM3, 5m.	1	10
FXTRL7N7NANM010	12 core PanMPO™ Interconnect, OM3, 10m.	1	10
FXTRL7N7NANM015	12 core PanMPO™ Interconnect, OM3, 15m.	1	10
FC2XN-12-10AS	Fibre cassette, 6 duplex LC to MPO, 12 core Method A Standard, OM3.	1	10
FC2XN-12-10AF	Fibre cassette, 6 duplex LC to MPO, 12 core modified Method A, flipped, OM3.	1	10

Fibre Pigtail Sets



FX1BN3NNNSNM001



FX1BN1NNNSNM001

Part Number	Description	Std. Pkg. Qty.	Std. Ctn. Qty.
FX1BN3NNNSNM001	OM3 1-fibre, 900µm, buffered, SC to pigtail, std. IL., 1m.	1	10
F91BN3NNNSNM001	OS1/OS2 1-fibre, 900µm buffered, SC to pigtail, Std. IL., 1m.	1	10
FX1BN1NNNSNM001	OM3 1-fibre, 900µm, buffered, LC to pigtail, std. IL., 1m.	1	10
F91BN1NNNSNM001	OS1/OS2 1-fibre, 900µm, LC to pigtail, std. IL., 1m.	1	10

Cabinet



S6512B

Part Number	Description	Std. Pkg. Qty.	Std. Ctn. Qty.
S8512BA	Net-Access™ S-Type Cabinet frame with top panel. Dimensions: 79.8"H x 31.5"W x 48.0"D (2026mm x 800mm x 1070mm).	1	1
S6512B	Net-Access™ S-Type Cabinet frame with top panel. Dimensions: 85.0"H x 23.6"W x 42.0"D (2160mm x 600mm x 1067mm).	1	1
E6412B2	24 RU 600mm wide x 1070mm deep, perforated front and rear doors, solid side panels.	1	1
E6212B1	12 RU 600mm wide x 1070mm deep, perforated front and rear doors, solid side panels.	1	1
PZC12W	Wall mount cabinet with windowed front door.	1	1

Racks, Shelves and Accessories



R4PCN

Part Number	Description	Std. Pkg. Qty.	Std. Ctn. Qty.
Racks			
R2P	2 post rack, 45 RU, with threaded rails.	1	1
R4PCN	4 post rack, 45 RU with cage nut rails, 760mm deep.	1	1
NFR84	NetFrame™ Equipment Rack.	1	1
NFD884	Hinged metal door (8").	1	1
NFD1284	Hinged metal door (12").	1	1
NFVSM4	Slack manager.	1	1
NFBRFK	Bend radius finger kit.	1	1
NFEP	End panel.	1	1

Shelves			
SRM19FM1	Front mount shelf, 1 RU, 480mm deep.	1	1
RSHLF	Front and rear mount shelf, 1 RU, 760mm deep.	1	1

Rack Accessories			
S1224-C	#12-24 screws.	100	1000
CNWS1224-C	#12-24 cage nut with screws.	100	1000
CNWSM6-C	M6 cage nut with screws.	100	1000
R2PPDUB	PDU mounting kit, suits 2 post rack and 4 post rack.	1	1

Grounding			
RGCBNJ660P22	Common bonding jumper and HTAP.	1	10
RGCBNJ660PY	Common bonding jumper and HTAP.	1	10
RGS134-1Y	Grounding strip for threaded rail.	1	10
RGS134B-1	Grounding strip for caged nut rails.	1	10
RGESDWS	ESD wrist strap with 6' coil cord, banana plug.	1	10
RGESD2-1	ESD port for threaded rail.	1	10
RGESD2B-1	ESD port for caged nut rail.	1	10
RGRB19CN	Grounding bus bar.	1	10
CNBK	Green bonding #12-24 cage nuts and bonding screws (package of 50).	1	10
RGTBSG-C	Green thread-forming bonding screw, #12-24 x 1/2".	100	1000
RGS134-1Y	Grounding strip kit.	1	1



RGS134-1Y

Cable Managers



NMF4



WMPSE



PRV8 WMPVHC45E

Part Number	Description	Std. Pkg. Qty.	Std. Ctn. Qty.
NMF2	NetManager™ Horizontal cable manager high capacity front only, 2 RU.	1	1
NMF4	NetManager™ Horizontal cable manager high capacity front only, 4 RU.	1	1
WMPSE	PatchLink™ Horizontal Cable Manager, front and rear, 1 RU.	1	1
WMP1E	PatchLink™ Horizontal Cable Manager, front and rear, 2 RU.	1	1
WMPFSE	PatchLink™ Horizontal Cable Manager, front only, 1 RU.	1	1
WMPF1E	PatchLink™ Horizontal Cable Manager, front only, 2 RU.	1	1
PRV8	PatchRunner™ Dual-Sided Vertical Cable Manager, 8 inch.	1	1
PRVF8	PatchRunner™ Single-Sided Vertical Cable Manager, 8 inch.	1	1
PRD8	PatchRunner™ Door, 8 inch.	1	1
PRV12	PatchRunner™ Dual-Sided Vertical Cable Manager, 12 inch.	1	1
PRD12	PatchRunner™ Door, 12 inch.	1	1
PREP	PatchRunner™ End Panel.	1	1
WMPVHC45E	NetRunner™ Dual-Sided High-Capacity Vertical Cable Manager, 170mm wide, 45 RU.	1	1

Power Distribution Unit



HBOD2J0AA10M1

Part Number	Description	Std. Pkg. Qty.	Std. Ctn. Qty.
HBOD2J0AA10M1	Horizontal power strip with a 16 A, 230V, ten IEC C-13 receptacles, with C-20 power inlet.	1	1
VBOD2B2BM30P1	Vertical power strip with a 32 A, 230V, 24 C-13 and six C19 receptacles, with 3m power cord, IEC 60309.	1	1
VB1D2B2BM30P1	Vertical power strip with a 32 A, 230V, 24 C-13 and six C19 receptacles, power meter, 3m power cord, IEC 60309.	1	1

Blanking Panels



TLBP1S-V

Part Number	Description	Std. Pkg. Qty.	Std. Ctn. Qty.
TLBP1S-V	Toolless blanking panel, 1 RU, suit cage nut holes.	5	50
TLBP2S-V	Toolless blanking panel, 2 RU, suit cage nut holes.	5	50
CPAF1BLY	Blanking panel, angled, 1 RU.	1	10
FLBSIM-51	Full-length blanking shade, 4 – 51 RU.	5	50

Consolidation Point



P110B1004R2Y

Part Number	Description	Std. Pkg. Qty.	Std. Ctn. Qty.
-------------	-------------	----------------	----------------

Consolidation Point

P110B1004R2Y	Two Category 5e 100-pair bases premounted to panel. 4-pair connector.	10	10
P110KB1004Y	Category 5e 100-pair base with legs. 4-pair connector.	100	100
P110B100R2Y	Two 100-pair bases pre-mounted to panel.	1	1
P110B100R4WJY	Two 100-pair bases with jumper troughs pre-mounted to panel.	1	1
P110JTW-X	Jumper troughs with legs.	10	10
P110PC1IG1MY	One pair Pan-Punch™ 110 Patch Cord Assembly with 1-pair 110 connectors on each end.	1	1
P110PC2IG1MY	Two pair Pan-Punch™ 110 Patch Cord Assembly with 2-pair 110 connectors on each end.	1	1
P110PC4IG1MY	Four pair Pan-Punch™ 110 Patch Cord Assembly with 4-pair 110 connectors on each end.	1	1
P110PC4IG1MAY	Four pair Pan-Punch™ 110 Patch Cord Assembly with one 4-pair 110 connector and one RJ4 Pan-Plug™ T568A plug.	1	1

Zone 19" Rack Mounting

PZLRB2U	Ladder rack bracket, 2 RU.	1	1
PZLRB4U*	Ladder rack bracket, 4 RU.	1	1

*Also available in 6 RU.

Labeling



TDP43ME/E

Part Number	Description	Std. Pkg. Qty.	Std. Ctn. Qty.
TDP43ME/E	300 dpi printer.	1	1
TDP43ME/E-KIT	TDP43ME/E-KIT Printer Kit.	1	1
RMEH4BL	Black thermal transfer ribbon.	1	1
RMER4BL	Black resin thermal transfer ribbon.	1	1
R100X150V1T	Thermal transfer Turn-Tell labels for TDP43ME (Cat 5e UTP/Cat 6 UTP/ Cat 6A UTP cable labels).	2500	2500
S100X150VATY	Thermal transfer self-laminating label for TDP43ME (Cat 5e UTP/Cat 6 UTP/ Cat 6A UTP cable labels).	5000	5000
NWSLC-3Y	LabelCore™ sleeve for 3mm fiber simplex cable, Orange.	100	100
NWSLC-7Y	LabelCore™ sleeve for 3mm fiber duplex cable, White.	100	100
R100X150X1J	Self-laminating Turn-Tell™ labels for Laser/Inkjet printer, White (Cat 5e UTP/Cat 6 UTP/Cat 6A UTP cable label).	1000	1000
S100X150YAJ	Self-laminating labels for Laser/Inkjet printer, White (Cat 5e UTP/Cat 6 UTP/Cat 6A UTP cable label).	2500	2500

Security Devices



Part Number	Description	Std. Pkg. Qty.	Std. Ctn. Qty.
PSL-LCAB	LC duplex adapter blockout device, ten devices (Red) and one removal tool (Black).	1	20
FLCCLIW-X	LC patch plug lock-in device, ten devices and one removal tool.	10	100
PSL-DCJB-BL	Jack module blockout device, ten block-outs (Black) and one removal tool (Black).	1	20
PSL-DCJB-BU	Jack module blockout device, ten block-outs (Blue) and one removal tool (Black).	1	20
PSL-DCJB	Jack module blockout device, ten block-outs (Red) and one removal tool (Black).	1	20
PSL-DCPLRX	Recessed RJ45 plug lock-in device, ten devices (Red) and one installation/removal tool (Black).	1	20
PSL-DCPLS	Super recessed RJ45 plug lock-in device, ten devices (Red) and one installation/removal tool (Black).	1	20
PSL-DCPLX	RJ45 plug lock-in device, ten devices (Red) and one installation/removal tool (Black).	1	20

Tools



EGJT



TGJT



CBOT24K

Part Number	Description	Std. Pkg. Qty.	Std. Ctn. Qty.
EGJT	TG jack termination tool.	1	—
TGJT	TG jack termination tool, for high-volume installations.	1	—
CJAST	Copper cable jacket stripper.	1	1
CWST	Copper wire snips.	1	1
PDT110	110 punchdown tool.	1	1
CBOT24K	Cable bundle organising tool.	1	10
FCAMKIT	OptiCam™ Termination Kit.	1	1
MPT5-8AS	Crimp tool for TX6™ PLUS and Pan-Plug™ Modular Plugs.	1	1
SGPT	28/30 AWG modular plug termination tool.	1	1

PanView iQ™



PVQ-MIQAPU24



PVQ-EPC14

Part Number	Description	Std. Pkg. Qty.	Std. Ctn. Qty.
PVQ-MIQAPU24	24-port angled PanView iQ™ Patch Panel.	1	1
PVQ-MIQPU24	24-port flat PanView iQ™ Patch Panel.	1	1
PVQ-FMT	24-port Pan-View iQ™ Fiber Tray with no fiber adapters.	1	1
PVQ-PM	PanView iQ™ Panel Manager.	1	1
PVQ-EM	PanView iQ™ Expansion Module.	1	1
PVQ-EPC14	PanView iQ™ Expansion Port Cable.	1	1
PVQ-PS12VDC-E	30W power supply for PVQ-PM.	1	1
PVUTPSPC3MBBUY	Pan-View iQ™ Cross-Connect Category 6 Patch Cord, 3m.	1	1
PVQ-EUSDC3MBU	Pan-View iQ™ Enhanced Interconnect Patch Cord Category 6A 10Gig, 3m.	1	1
PVF9L10-10M3Y	Pan-View iQ™ LC to LC Singlemode LSZH Fiber Patch Cord, 3m.	1	1
PVFXL10-10M3Y	Pan-View iQ™ OM3 LC to LC Multimode LSZH Fiber Patch Cord, 3m.	1	1

SmartZone™



RMS2T2PCLA01

Part Number	Description	Std. Pkg. Qty.	Std. Ctn. Qty.
RMS2T2PCLA01	SmartZone™ Rack Energy Kit with clamp meters. Kit includes: (2) clamp meters, SmartZone™ Rack Monitoring Software, (1) SmartZone™ Gateway EP042, (4) patch cords and (2) temperature sensors.	1	1



PANDUIT™

Panduit Korea International
7F-717, Korea City Air Terminal, 22
Teharan-ro 87-gil, Gangnam-gu
Seoul Korea

kor-cvsm@panduit.com
1-800-PANDUIT (Singapore)
+ 82 2 2182 7300 (Korea)

www.panduit.com