

# QuickNet™ Copper Cabling Systems

Quick Deployment for  
High-Density  
Data Center Applications



**PANDUIT**®

building a smarter,  
unified business foundation

Connect. Manage. Automate.

## Panduit's Unified Physical Infrastructure (UPI)

A unified approach to physical and logical systems architecture is imperative for solutions to fully address the need for availability, agility, integration, and security.

Panduit has developed the industry's most comprehensive and holistic approach to a Unified Physical Infrastructure and can help enterprises align, converge, and optimize critical systems – communication, computing, control, power, and security – to build a smarter, unified business foundation.

### Unified Physical Infrastructure



communication



computing



control



power



security

## Benefits of a Pre-Terminated Cabling System

Your network drives the critical data, voice, video, and security applications required to support your business. A pre-terminated cabling system simplifies the delivery of those network services by providing reliable infrastructure components assembled and tested in a factory-controlled environment.

An end-to-end pre-terminated cabling system is an ideal solution for data centers especially when time for traditional cable installation, termination, and testing is limited. Pre-terminated cable assemblies offer a simple plug-n-go solution for links between LAN switches, servers, patch panels, and zone distribution areas, for new installations or to enable easy additions to current infrastructure.



# Advantages of the Panduit® QuickNet™ Copper Cabling System

As part of the complete QuickNet™ Solution, the Panduit® QuickNet™ Copper Cabling System is a custom pre-terminated cabling solution, designed to meet unique structured cabling requirements. Fast and simple to install, this high-density solution provides consistent network reliability and reduces initial on-site rework. This leading-edge system delivers ensured performance for the lowest total cost of ownership.

## Quick Network Deployment

Pre-terminated cabling systems can be installed in 75% less time than field-termination methods, eliminating the need for on-site bundling, terminating, and testing. Moves, adds, and changes can be made immediately by existing on-site network professionals, increasing productivity relative to traditional field installations. This is critical for areas that require high security and limited access, as changes to the network can be made without scheduling outside personnel.

## Mitigates Risks – Quality, Reliability, Performance and Security

The QuickNet™ Cabling System mitigates risk in the areas of the quality, reliability, and performance of the installed system, as well as site security during installation. Quality and reliability of the installed system are ensured through the use of authentic Panduit components that are assembled and tested in Panduit's factory-controlled environment, and performance is ensured by the 100% testing of each finished assembly. Site security risks are minimized due to the significantly reduced installation time, which means fewer installers and less time spent by them on-site.

## Provides a Re-Deployable Asset

Each QuickNet™ assembly is labeled with length and unique serial number information so it can be easily catalogued and tracked as a network asset, and as such can quickly and easily be redeployed to address changing network needs.

## Why Specify Panduit® QuickNet™ Copper Cabling System?

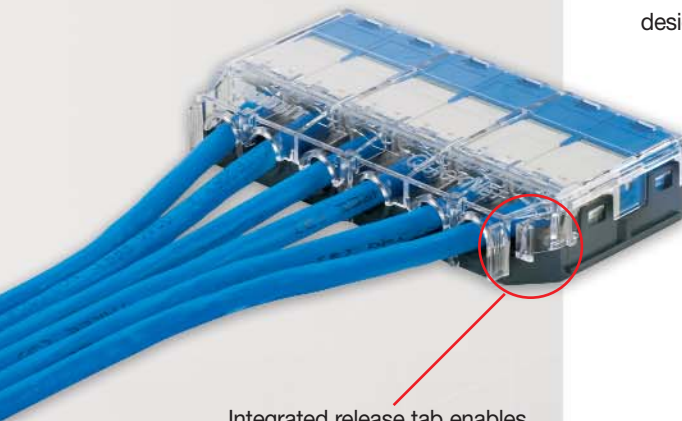
- **Quick Deployment**  
75% Faster
- **Ease of Installation**  
Plug-n-Go Solution
- **Improved Reliability**  
100% Factory Performance Tested
- **Unified Copper and Fiber Solution**  
Copper and Fiber in the Same Patch Panels
- **High Performing Cabling System**  
Category 6A and Category 6, UTP and Shielded
- **Standard Lengths Stocked**  
Immediate Availability
- **Custom Assemblies Available**  
For Unique Requirements
- **“Green” Solution**  
80% Less Packaging Waste

# A Foundation of Excellence

## Innovative Design

The Panduit® QuickNet™ Copper Cabling System incorporates innovative design features.

- Built-in release mechanism on QuickNet™ Pre-Terminated Cassettes enables simple installation and removal with one hand
- 48-port (1 RU) high-density angled patch panels and PatchRunner™ Vertical Cable Managers quadruple rack density for reduced real estate costs
- QuickNet™ Adapter snaps in and out of QuickNet™ Patch Panels and accepts all Mini-Com® Modules to provide flexibility and scalability for changing network requirements
- QuickNet™ Plug Pack Assemblies facilitate quick and easy connection and disconnection of cables to a variety of switches, reducing time and cost associated when installing and maintaining structured cabling links
- Staggered cable lengths ensure proper bend radius control and an aesthetic solution
- Jack modules, cable, and patch cords are tuned to each other to deliver maximum channel performance and network reliability



Integrated release tab enables easy installation and removal of 6-port pre-terminated cassette.

## World-Class Quality

QuickNet™ Copper Cabling System components are manufactured to strict ISO quality procedures.

- QuickNet™ Cable Assemblies are 100% performance tested to TIA or ISO electrical permanent link specifications (test report shipped with each assembly)
- Each assembly has a unique serial number for future traceability
- Giga-TX™ Jack Modules undergo more than 90 additional quality checks for assured performance

## World-Class Service and Support

At Panduit, we respond quickly to customer needs and deliver exceptional service levels globally.

- Global sales and technical support teams work together to ensure the optimum solution is provided to meet your requirements
- Short lead times and custom configurations keep your project on schedule
- Design tools facilitate customization and allow flexibility when designing the structured cabling infrastructure



Shielded cassettes provide seamless self bonding for shielded cable assemblies.



# Elements of the System

## QuickNet™ Cable Assemblies

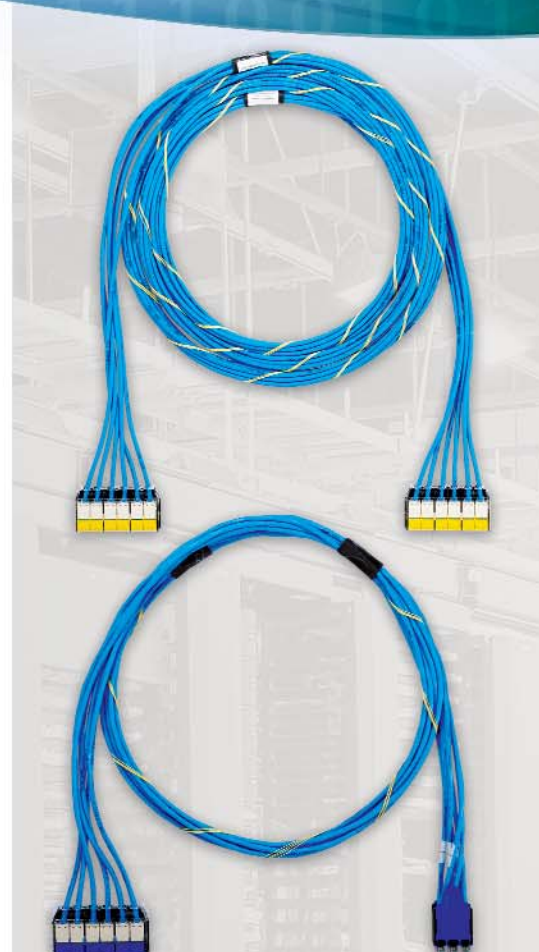
- Offer UTP Category 6 Cabling and UTP/STP Category 6A Cabling (plenum, riser, LSZH, and CM fire ratings)
- Pre-bundled with six cables for easy installation
- Available in lengths from 10 to 295 feet (one foot increments) or 3 meter to 90 meters (half meter increments) and different cable colors for redundant path applications
- Multiple termination types including pre-terminated cassettes, jack modules, modular plugs, plug packs, and/or unterminated options
- Shielded die cast cassette utilizes direct bonding, eliminating external bonding requirement

## QuickNet™ Angled and Flat Patch Panels

- Accept Quicknet™ Pre-Terminated Cassettes, which snap in and out with one hand for quick installation
- Available in 24-port (1 RU) standard density and 48-port (1 RU) high-density configurations
- Angled design allows cable to flow to each side of the rack and eliminates the need for horizontal cable managers by enabling patch cords to be routed directly into vertical cable managers
- Proper identification of each port with pre-printed numbers above each port; vertical numbering from top to bottom of panel is also available for high density switch applications

## QuickNet™ Patch Panel Accessories

- Patch panel adapter accepts Mini-Com® Modules for UTP, fiber optic, and audio/video applications
- Blank patch panel adapter reserves space for future use while promoting proper airflow and cooling
- Adapters and blanks easily snap in and out of QuickNet™ Patch Panels



QuickNet™ Plug Packs allow multiple cables to be installed simultaneously with one hand for speed of deployment in switch applications.



24-port, flat modular patch panel, populated with pre-terminated shielded cassettes with shielded jack modules.



48-port, angled modular patch panel, populated with pre-terminated cassettes with UTP jack modules



Patch panel blank

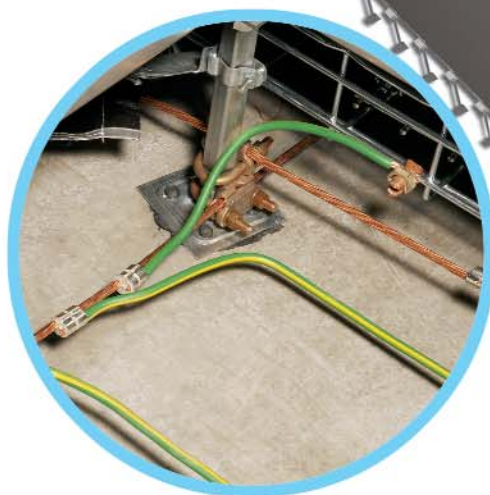


Patch panel adapter, populated with copper, fiber and audio video modules

# Data Center Applications



**QuickNet™ Jack-to-Plug Cable Assemblies are ideal for cross-connect applications**

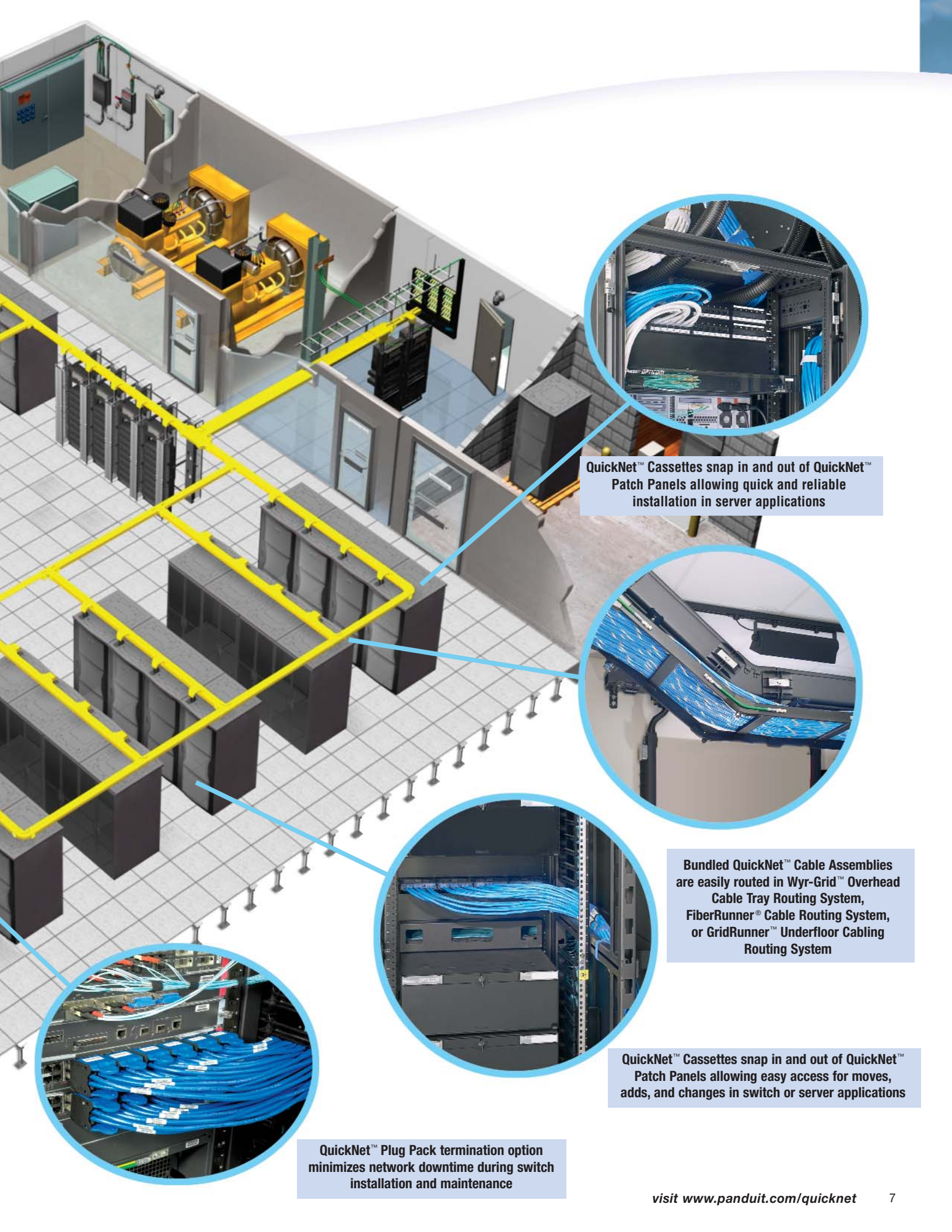


**The QuickNet™ Copper Cabling System is integrated with the Panduit® StructuredGround™ System to optimize network performance**



**QuickNet™ Copper and Fiber Cabling Systems are compatible with PanZone® Enclosures and Boxes for zone cabling applications**

For the full Panduit product offering, request Panduit® Pan-Net® Network Solutions Catalog, SA-NCCB51.



**QuickNet™ Cassettes snap in and out of QuickNet™ Patch Panels allowing quick and reliable installation in server applications**



**Bundled QuickNet™ Cable Assemblies are easily routed in Wyr-Grid™ Overhead Cable Tray Routing System, FiberRunner® Cable Routing System, or GridRunner™ Underfloor Cabling Routing System**



**QuickNet™ Cassettes snap in and out of QuickNet™ Patch Panels allowing easy access for moves, adds, and changes in switch or server applications**



**QuickNet™ Plug Pack termination option minimizes network downtime during switch installation and maintenance**

## A Commitment to Green

As a global manufacturer, Panduit has embraced lean and sustainable thinking as a core value by designing solutions and facilities that are good for the environment and for business. The QuickNet™ Copper Cabling System supports this commitment by significantly reducing the amount of product packaging waste as compared to traditional field-termination installations, and by providing cabling assemblies which are inherently redeployable and reusable.

### Environmental Benefits of the QuickNet™ Copper Cabling System

#### QuickNet™ installations are more “Green” than traditional installations:

- 80% Less Packaging Waste
- No Termination Scrap Material or Debris to Clean Up
- QuickNet™ Assemblies are Reusable

#### Typical Waste from Traditional Installation vs. QuickNet™ Installation (Based on 600 Link Installation)



Traditional Installation



QuickNet™ Installation

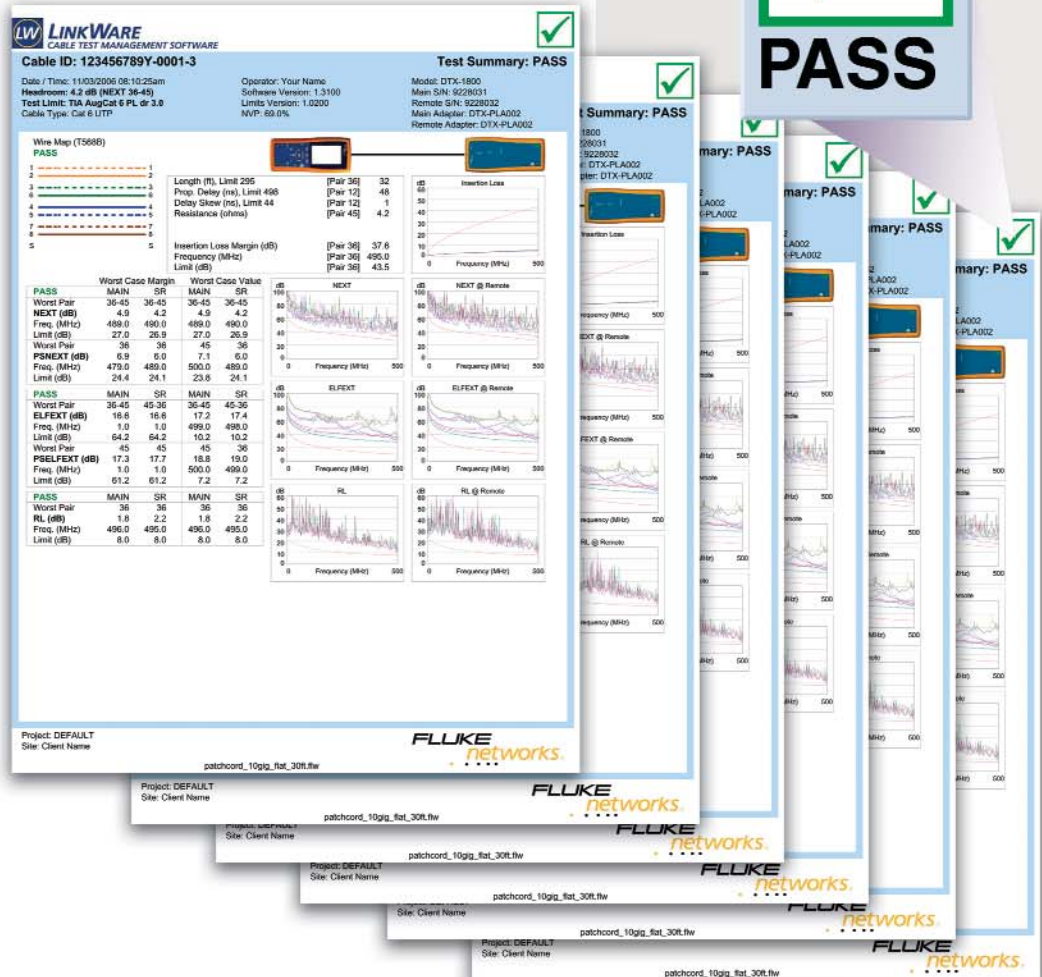


# Permanent Link Performance

The Panduit® QuickNet™ Copper Cabling System exceeds the applicable permanent link requirements for Category 6A and Category 6 transmission over twisted-pair cabling. Each assembly is 100% performance tested at the factory. A Fluke\* Linkware test report accompanies each cable assembly and will also be archived by Panduit. Because the cable assemblies are 100% factory tested, the time and cost associated with on-site field testing are eliminated. The QuickNet™ Copper Cabling System provides risk mitigation and guaranteed performance by providing cable assemblies with a factory product warranty.

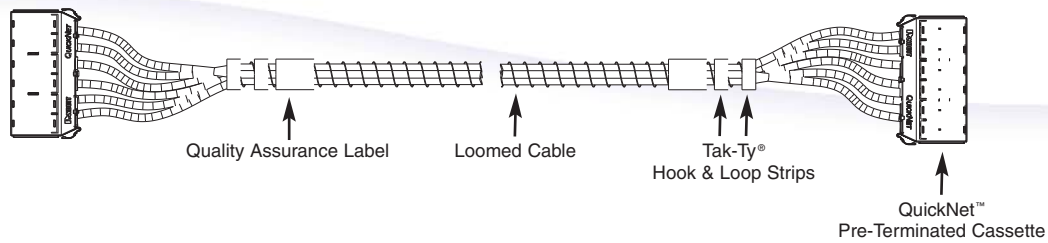
Permanent Link Compliance is tested for the following parameters:

- Insertion Loss (IL)
- Return Loss (RL)
- Near-End Crosstalk (NEXT)
- Power Sum Near-End Crosstalk (PSNEXT)
- Equal Level Far-End Crosstalk (ELFEXT)
- Power Sum Equal Level Far-End Crosstalk (PSELFEXT)



\*FLUKE is a registered trademark of Fluke Corporation.

# QuickNet™ Cable Assembly Ordering Information for North America



Example:

<b>Q</b>	<b>Z</b>	<b>P</b>	<b>B</b>	<b>C</b>	<b>B</b>	<b>C</b>	<b>B</b>	<b>X</b>	<b>X</b>	<b>10</b>
1	2	3	4	5	6	7	8	9	10	11

Example – The above part number is a 10 foot QuickNet™ Cable Assembly constructed of Category 6A, UTP, plenum cable (blue) with a pre-terminated cassette (blue jacks installed) on each end.

## 1 – Q = QuickNet™

## 2 – Performance Level

- B = Category 6 Enhanced UTP
- C = Category 6 UTP
- E = Category 6A (TX6A™ 10Gig™) Shielded
- X = Category 6A (TX6A-SD™ 10Gig™) UTP MaTriX
- Z = Category 6A (TX6A™ 10Gig™) UTP MaTriX

## 3 – Flame/Smoke Rating

- R = Riser or P = Plenum

## 4 – Cable Color

- B = Blue or W = White

## 5 – Termination End 1

- C = Cassette
- J = Jack modules
- P = Modular plugs
- K = Jack modules staggered right
- L = Jack modules staggered left
- Q = Modular plugs staggered right
- S = Modular plugs staggered left

## 6 – Termination End 1 Color Options

- Jack Module Color Options**
- B = Blue, E = Electric Ivory, G = Green,
  - H = Off White, I = International Gray,
  - L = Black, O = Orange, R = Red, V = Violet,
  - W = White, Y = Yellow
- Shielded Jack Modules, chose option  
L (all Shielded Jack Modules are Black)
- Modular Plug and Underterminated Color Options**
- X = No color option available, all modular plugs are clear

## 7 – Termination End 2

- A = Plug pack (6-pack)
- R = Recessed plug pack (6-pack)
- C = Cassette
- J = Jack modules
- P = Modular plugs
- K = Jack modules staggered right
- L = Jack modules staggered left
- Q = Modular plugs staggered right
- S = Modular plugs staggered left
- U = Underterminated
- O = Underterminated with cassette and jack modules for on-site termination

## 8 – Termination End 2 Color Options

- Jack Module Color Options**
- B = Blue, E = Electric Ivory, G = Green,
  - H = Off White, I = International Gray,
  - L = Black, O = Orange, R = Red, V = Violet,
  - W = White, Y = Yellow
- Shielded Jack Modules, chose option  
L (all Shielded Jack Modules are Black)
- Plug Pack Color Options**
- B = Blue, W = White, R = Red, L = Black
- Recessed Plug Pack Color Options**
- S = Silver
- Modular Plug and Underterminated Color Options**
- X = No color option available, all modular plugs are clear

## 9 – Assembly Options

- P = Pulling eye
- X = No assembly options requested

## 10 – Custom Labeling\*

- L = Custom assembly label
- C = Custom cable labels
- B = Custom assembly and cable labels
- X = No custom labels requested

## 11 – Assembly Length\*\*

- 10' to 295' (one foot increments)

\*Custom cable assembly labels are available up to eighteen characters; individual cable labels are available up to fifteen characters.

\*\*For cable assemblies constructed of Category 6A (TX6A-SD™ 10Gig™) UTP MaTriX Copper Cable, the maximum length is 196 ft. (60m).

All connectivity is wired T568B. Category 6 Enhanced Performance level utilizes Panduit® TX6500™ Category 6 UTP Cable. Permanent link test results shipped with each cable assembly.

## Termination Options



UTP Cassette



Shielded Cassette



UTP Jack Modules



UTP Modular Plugs



Un-Terminated



6-Port Plug Pack

# QuickNet™ Patch Panels, Accessories, and Patch Cords



QAPP48HDBL



QPP48HDBL



QPPABL



QPPBBL



SRB19BLY



QPP6BU



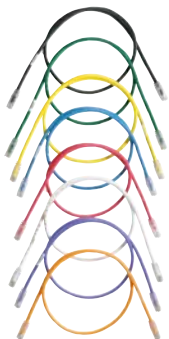
QPPLD6-X

Part Number	Description	No. of Rack Spaces <sup>^</sup>	Std. Pkg. Qty.	Std. Ctn. Qty.
<b>QuickNet™ Angled Patch Panels</b>				
QAPP24BL	24-port, angled patch panel.	1	1	10
QASP24BL	24-port, all metal angled patch panel which accepts QuickNet™ Pre-Terminated Shielded Cassettes and Patch Panel Adapters.	1	1	10
QAPP48HDBL	48-port, high-density angled patch panel.	1	1	10
QAPP48HDVNSBL	48-port, high-density angled patch panel with pre-printed vertical numbering on each port for switch applications.	1	1	10
QASP48HDBL	48-port, all metal angled patch panel which accepts QuickNet™ Pre-Terminated Shielded Cassettes and Patch Panel Adapters.	1	1	10
<b>QuickNet™ Flat Patch Panels</b>				
QPP24BL	24-port, flat patch panel.	1	1	10
QSP24BL	24-port, all metal patch panel which accepts QuickNet™ Pre-Terminated Shielded Cassettes and Patch Panel Adapters.	1	1	10
QPP48HDBL	48-port, high-density flat patch panel.	1	1	10
QPP48HDVNSBL	48-port, high density flat patch panel with pre-printed vertical numbering on each port for switch applications.	1	1	10
QSP48HDBL	48-port, all metal patch panel which accepts QuickNet™ Pre-Terminated Shielded Cassettes and Patch Panel Adapters.	1	1	10
<b>Patch Panel Adapter</b>				
QPPABL	6-port, patch panel adapter accepts Mini-Com® UTP, fiber optic, and audio/video modules.	—	1	10
<b>Patch Panel Blank</b>				
QPPBBL	Reserves space for future use and promotes proper airflow and cooling.	—	1	10
<b>Strain Relief Bar</b>				
SRB19BLY	Cable strain relief bar extends 2" off of the rack to support cables in patch panels.	—	1	10
<b>Label Kit</b>				
QPPLC24	Label/label cover kit for 24-port QuickNet™ Patch Panels. Each kit contains four labels and four clear label covers per bag.	—	1	10
<b>Plug Packs</b>				
QPP6++	QuickNet™ Plug Pack accepts six RJ45 modular plugs.	—	1	10
QPP8++	QuickNet™ Plug Pack accepts eight RJ45 modular plugs.	—	1	10
QPPR6S	QuickNet™ Recessed Plug Pack accepts six RJ45 modular plugs.	—	1	10
<b>Plug Pack Accessories</b>				
QPprt	Removal tool allows individual cables to be removed from plug pack without disruption of other network connections.	—	1	10
QPPLD6-X	Lock-in device prevents unauthorized removal of cables from the plug pack.	—	10	100

<sup>^</sup>One rack space = 1.75" (44.45mm).

++Available in BU (Blue), BL (Black), RD (Red), or WH (White).

Recessed version, part number QPPR6S, is silver.



Part Number	Part Description
<b>Patch Cords</b>	
UTP6A*	Category 6A UTP CM patch cord with TX6™ PLUS Modular Plugs on each end.
UTP6ASD*	Category 6A-SD UTP CM patch cord with TX6™ PLUS Modular Plugs on each end.
STP6X*	Category 6A shielded LSZH/CM patch cord with TX6™ PLUS Shielded Modular Plugs on each end.
UTPSP*Y	Category 6 UTP CM patch cord with TX6™ PLUS Modular Plugs on each end.

\*Represents multiple foot lengths and multiple colors.  
Contact customer service for additional information.

## Real-World Solutions to Ensure the Success of Our Customers

*With a proven reputation for excellence and technology innovation, a robust ecosystem of global partners, and long-term alliances with top industry leaders, Panduit is a valuable, trusted partner offering strategic vision and real-world solutions to ensure the success of our customers.*



### Innovative Technology Leadership

Panduit is an industry leader in developing innovative technology solutions that meet the rapidly evolving needs of our customers around the world. Our commitment to continued leadership is supported by significant ongoing investment, dedicated manufacturing facilities, strategic technology alliances, and collaborative R&D with other industry leaders.



### Global Business & Commitment

Panduit's ongoing commitment to excellence and our technology alliances with key industry leaders such as Cisco Systems, EMC, Emerson, and IBM enables our highly skilled and knowledgeable global sales, systems engineering, and technical support teams to engage with critical customer challenges that range from initial problem determination all the way to resolution. Local specialists, trained to global standards and competencies, provide consistent regional support that brings value to local business. Our global value chain, which combines manufacturing, distribution, and service, provides prompt responses to customer-related issues, and streamlines procurement and delivery to any global destination.



### Best-In-Class Partner Ecosystem

Panduit employs a consultative approach to identify customer needs and engage appropriate partners in a collaborative fashion to serve our customers. Panduit's robust ecosystem of architects, consultants, engineers, designers, systems integrators, contractors, and distributors offer a full portfolio of lifecycle services. Our partners are trained on relevant services to Plan & Design, Build & Deploy, and Maintain & Operate to deliver predictable and measurable results.



### Worldwide Alliances

Panduit has established long-term strategic alliances with top global industry leaders such as Cisco Systems, EMC, IBM, and Rockwell Automation to develop and integrate innovative, holistic solutions for our customers. We continually invest in relationships and resources for solving our customers' greatest business challenges.



### Eco-Sustainability & Global Citizenship

With a long-standing commitment to environmental excellence, Panduit continually develops and implements solutions designed to protect, replenish, and restore the world in which we live and operate. This commitment is demonstrated by Panduit's LEED Gold certified new world headquarters and future sustainable building plans using its own revolutionary Unified Physical Infrastructure<sup>SM</sup> approach to enable convergence of critical systems for driving energy efficiency.

*Harness the power of  
your Enterprise Network*

*Call or visit us online,  
we can show you how.*

**Panduit Corp.**  
World Headquarters  
Tinley Park, IL 60487

[cs@panduit.com](mailto:cs@panduit.com)

US and Canada: 800.777.3300

Europe, Middle East, and Africa:

44.208.601.7200

Latin America: 52.33.3777.6000

Asia Pacific: 65.6305.7575

[www.panduit.com](http://www.panduit.com)

**PANDUIT**<sup>®</sup>