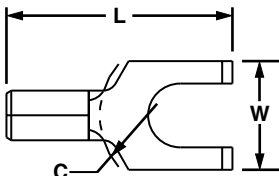




Flanged Fork Terminal, Non-Insulated

Type P-FF

- Fork design provides for fast and easy installation, without the need to remove fastener
- Flange design provides extra secure connection on a variety of applications
- Internal barrel serrations assure good wire contact and maximum tensile strength
- Brazed seam protects terminal barrel from splitting during the crimp process
- Barrel of terminal internally beveled to provide quick and easy wire insertion
- Maximum recommended operating temperature 302°F (150°C)
- UL and CSA rated up to 2000 V per UL 486A/B



Part Number	Wire Range	Stock Thickness (In.)	Stud Size	Figure Dimensions (In.)			Recommended Installation Tool	Std. Pkg. Qty.**	Std. Ctn. Qty.
				L	W	C			
P18-8FF-C	22 – 16 AWG	0.03	#8	0.72	0.31	0.25	CT-100A‡, CT-200‡	100	500
P14-6FF-C	16 – 14 AWG	0.03	#6	0.65	0.28	0.22	CT-600-A‡, CT-1570‡, CT-2500‡	100	500
P14-8FF-C		0.03	#8	0.72	0.31	0.25	CT-100A‡, CT-200‡, CT-600-A‡, CT-1570‡, CT-1701‡, CT-2500‡	100	500
P10-10FF-L	12 – 10 AWG	0.04	#10	0.80	0.38	0.28	CT-100A‡, CT-200‡, CT-600-A‡, CT-1570‡, CT-1701‡, CT-2500‡	50	500

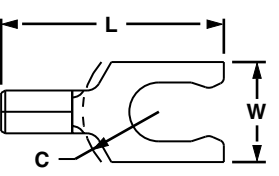
**Bulk packaging may be available, contact Panduit® Customer Service for additional information.
 ‡UL and CSA approved tooling/product combinations. For crimping tool information see www.panduit.com/tools.



Locking Fork Terminal, Non-Insulated

Type P-LF

- Locks in place for secure connection
- Fork design provides for fast and easy installation, without the need to remove fastener
- Internal barrel serrations assure good wire contact and maximum tensile strength
- Brazed seam protects terminal barrel from splitting during the crimp process
- Barrel of terminal internally beveled to provide quick and easy wire insertion
- Maximum recommended operating temperature 302°F (150°C)
- UL and CSA rated up to 2000 V per UL 486A/B



Part Number	Wire Range	Stock Thickness (In.)	Stud Size	Figure Dimensions (In.)			Recommended Installation Tool	Std. Pkg. Qty.**	Std. Ctn. Qty.
				L	W	C			
P18-6LF-C	22 – 16 AWG	0.03	#6	0.68	0.27	0.22	CT-100A‡, CT-200‡	100	500
P18-6LFW-C		0.03	#6	0.70	0.29	0.22	CT-600-A‡, CT-1570‡, CT-2500‡	100	500
P18-8LF-C		0.03	#8	0.74	0.29	0.23	CT-100A‡, CT-200‡, CT-600-A‡, CT-1570‡, CT-2500‡	100	500
P18-10LFN-C***		0.03	#10	0.74	0.28	0.23	CT-100A‡, CT-200‡, CT-600-A‡, CT-1570‡, CT-2500‡	100	500
P18-10LF-C		0.03	#10	0.74	0.33	0.23	CT-100A‡, CT-200‡, CT-600-A‡, CT-1570‡, CT-2500‡	100	500
P14-6LF-C	18 – 14 AWG	0.03	#6	0.70	0.25	0.22	CT-100A‡, CT-200‡	100	500
P14-6LFW-C		0.03	#6	0.70	0.29	0.22	CT-600-A‡, CT-1570‡, CT-2500‡	100	500
P14-8LF-C		0.03	#8	0.77	0.29	0.27	CT-100A‡, CT-200‡, CT-600-A‡, CT-1570‡, CT-2500‡	100	500
P14-10LFN-C***		0.03	#10	0.77	0.29	0.27	CT-100A‡, CT-200‡, CT-600-A‡, CT-1570‡, CT-2500‡	100	500
P14-10LF-C		0.03	#10	0.77	0.33	0.27	CT-100A‡, CT-200‡, CT-600-A‡, CT-1570‡, CT-2500‡	100	500
P10-6LF-L	14 – 10 AWG	0.04	#6	0.77	0.30	0.23	CT-100A‡, CT-200‡	50	500
P10-8LF-L		0.04	#8	0.79	0.30	0.23	CT-600-A‡, CT-1570‡, CT-2500‡	50	500
P10-10LF-L		0.04	#10	0.79	0.34	0.23	CT-100A‡, CT-200‡, CT-600-A‡, CT-1570‡, CT-2500‡	50	500
P10-14LF-L		0.04	1/4"	0.92	0.46	0.33	CT-1701‡, CT-2500‡	50	500

**Bulk packaging may be available, contact Panduit Customer Service for additional information.
 ***Not CSA certified.
 ‡UL and CSA approved tooling/product combinations. For crimping tool information see www.panduit.com/tools.