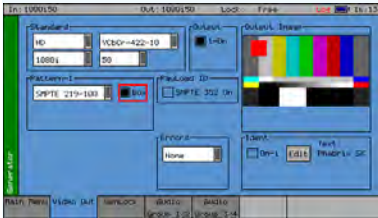




PHABRIX[®]
broadcast excellence

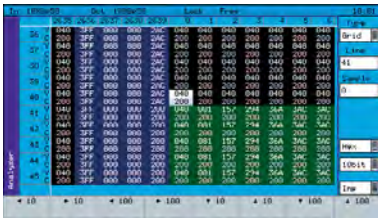
SXTAG OPTIONS

The following software options are available for the PHABRIX SxTAG instrument and can be purchased via your LEADER Sales Representative.



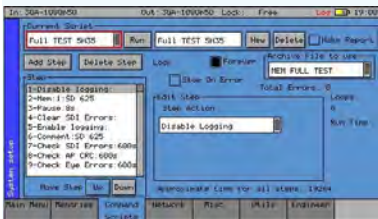
The **Generator option** allows the creation of video test signals for analog composite video, SD-SDI and HD-SDI video as standard. **3G-SDI and 2K SDI can be purchased as an additional option.** The Generator option also allows the generation of both analog and digital audio test tones and allows the unit to be locked to an external locking reference.

Order reference PHSXO-GEN



The **SDI Analysis option** provides the engineer with a detailed view of the data words contained within the SDI stream. This allows the analysis of complex faults and is particularly useful when determining compatibility issues between equipment and when debugging new product developments particularly in a R&D environment.

Order reference PHSXOSD



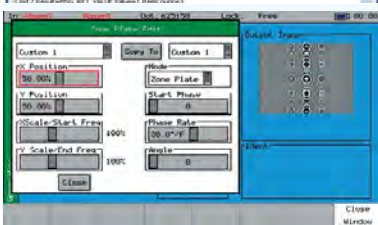
The **Command Scripts with Print Report option** allows a series of pre-defined actions such as controlling the generator, analyzer and logging functions within the PHABRIX instrument using a script stored in internal memory. A print report feature allows an internal HTML form to be auto filled with parameters set and subsequently downloaded and printed.

Order reference PHSXOS



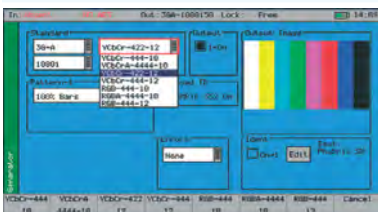
The **Enhanced Remote Control option** allows full remote control of the instrument via TCP/IP Sockets to allow any aspect of the unit to be modified or queried. Complex applications can be created to perform test and measurement functions such as automated testing of routers or other broadcast equipment and infrastructure.

Order reference PHSXOR



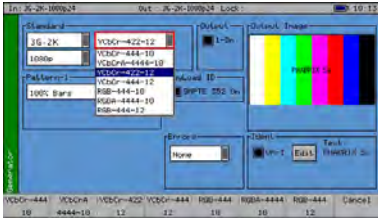
The **Programmable Moving Zone Plate option** (Generator option required) can be used to test a range of video processing requirements using horizontal, vertical and temporal (time) controls. Temporal control is particularly useful for testing up/down converters/monitors and applications which compress signals.

Order reference PHSXOZ



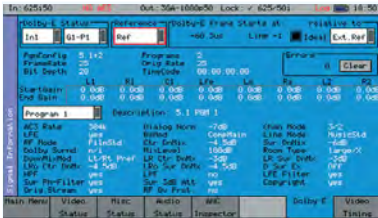
The **3G Formats option** (Generator option required to generate 3G signals) includes 4:2:2 YUV, 4:4:4 RGB and 4:4:4 YUV at 10/12 bit and 3G level A and B. Among the support for 3G level B is the ability to analyze signals such as SMPTE 425-B carrying 1 x SMPTE 372M Dual-Link payload.

Order reference PHSXO-3GADV



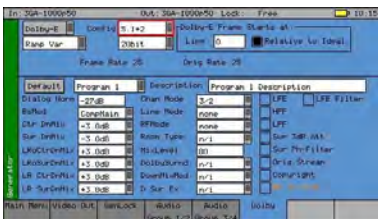
The **SDI 2K Formats option** (Generator option required to generate 2K format signals) supports the new SDI practice for HD and 3G Level A and Level B signal transfer of 2K advanced formats including 4:2:2 Y'C'B'C'R, 4:4:4 R'G'B' and 4:4:4 Y'C'B'C'R at 10/12 bit as well as 4:4:4 X'Y'Z' at 12-bit. For broadcast manufacturers this option allows rigorous testing of many more formats beyond the standard signals used in traditional broadcasting.

Order reference PHSXO-2K



The **Dolby Analysis option** supports Dolby E, Dolby Digital and Dolby Digital Plus formats. It can display Dolby meta data present in a selected audio stream and determines whether the Dolby-E packet is timed correctly on the SDI video stream. The Dolby metadata may be monitored from any of the SDI input embedded audio channel pairs or the AES input. Dolby E Peak audio levels metering is also displayed.

Order reference PHSXO-DA



The **Dolby Metadata Generation option** (Generator option required) supports Dolby E, Dolby Digital and Dolby Digital Plus formats. It includes the ability to adjust the 'start of frame' for Dolby E packets. Dolby streams are provided for all program configurations with fixed audio data. Dolby E Metadata can be edited by the user and stored in memories.

Order reference PHSXO-DG



The **Dolby Generation + Analysis option** (Generator and Analyzer options required) combines the functionality of these two option in a single purchasable option.

Order reference PHSXO-DAG



The **Ancillary Data Status option** provides a very quick status view of the ancillary data present in a SDI signal. It does not decode the data fully and is intended to be a fast analysis tool to show if a packet type is present, absent or red if in fault. Full logging is available along with DID and SDID custom setup.

Order reference PHSXOVNC



The **Optical module option** supports a wide range of **SFP modules** covering Analyzer and Generator functionality. Please contact your LEADER representative for specific details.



A **break-out cable** is available to provide AES input and output as well as calibrated balanced analog audio input and output to broadcast levels.

Order Reference PHSXC-1

Represented in the Americas by

LEADER INSTRUMENTS CORPORATION

Toll Free (800) 645-5104
Sales@LeaderAmerica.com

Phone (714) 527-9300
www.LeaderAmerica.com

