

Super High-Density Coax Patching System

The ProPatch® Miniature (PPM) Series is an all new Super High-Density Coax (SHDC) patching system designed for High Definition (HD), SDI, AES audio, 5.1 and 7.1 audio applications where coax medium is preferred but space is at a premium. The system is available in both 1 and 1.5 rack unit configurations. The 1 rack unit panel features a patent-pending pullout designation strip that dramatically increases space for text, and a high-density 2x48 circuit configuration of ports. The 1.5 rack unit panel features 4x48 ports.



The SHDC jack features a unique patent-pending switchable termination system that allows the user to select terminating and non-terminating 75 Ω functions on each circuit pair. The normal-through system is also available in a straight-through configuration for tie-line panels and applications where normals are not required. The SHDC high-performance normalling and straight-through LCC jacks are rated to SMPTE 424M HD standard. The SHDC AES jacks are rated for AES digital audio and analog video transmission. Both versions feature modular screwless mounting, circuit identification icons on the rear of the jack, 10,000 insertion/withdrawal cycles and are fully qualified to MIL-STD 202 for the ultimate in durability.

The system features two options. ADC's patented push-pull LCC connector technology on the backplane, or standard 1.0/2.3 connectors and ADC's patented LCC and LCP connectors terminate the same as a BNC using standard tooling.

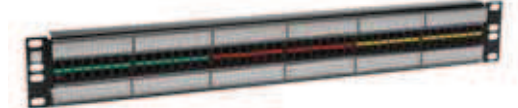
1 Rack Unit Super High-Density Coax Patch Panel



Features

- High-density: 48 total jacks (2x48)
- Large designation strips: .440" wide designation on top and bottom; plus a 1" slide out designation
- Lightweight: Less than 1 Kg (2 lbs) total panel weight

1.5 Rack Unit Super High-Density Coax Patch Panel



Features

- High-density: 48 total jacks (2x48)
- Large designation strips: .680" designation on top and bottom
- Lightweight: Less than 1.4 Kg (3 lbs) total panel weight

1.5 Rack Unit Super High-Density Coax Patch Panel

Features

- High-density: 96 total jacks (4x48)
- Large designation strips: .440" wide middle designation, .289" on top and bottom
- Lightweight: Less than 1.8 Kg (3.8 lbs) total panel weight



Specifications

ELECTRICAL

Characteristic impedance:	75 Ω
Voltage rating:	600 Volts RMS
Bandwidth	
HD LCC:	Up to 3 GHz
HD 1.0/2.3:	Up to 3 GHz
Straight-through LCC:	Up to 3 GHz
Straight-through 1.0/2.3:	Up to 3 GHz
AES:	Up to 500 MHz
Contact resistance:	.030 Ω max change post environmental
Insulation resistance:	200 M Ω min change

MECHANICAL

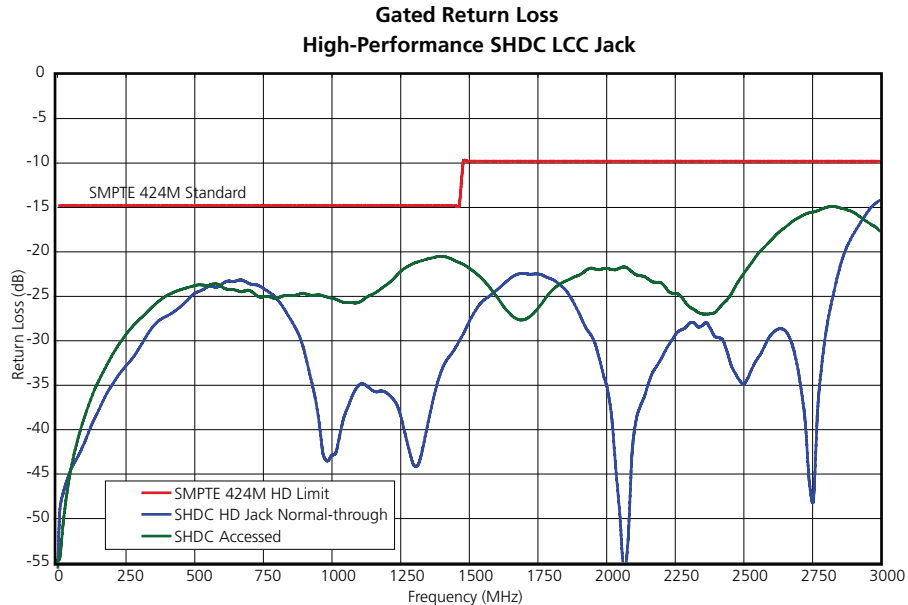
Mechanical durability:	10,000 cycles min (Front port: LCP) 500 cycles min (Back port: LCC)
Center contact retention:	6 lbs min
SHDC jack panel retention:	20 lbs min
Patch cord cable bend and twist:	500 cycles min

ENVIRONMENTAL

Thermal shock:	-40° C to 65° C, operating; -55° C to 85° C, non-operating
Moisture resistance:	0% to 95%; MIL-STD-202 Method 106
Corrosion (salt spray):	MIL-STD-202 Method 101, test condition B
Flammability:	UL 94-VO rated (center conductor insulator)
Vibration:	MIL-STD-202 Method 201
Solvent resistance:	MIL-STD-202 Method 215

FINISH

Sheet metal panel:	.060 CRS with protective black finish
Jack plastic housing:	30% Glass Filled Valox
Nickel coax housings:	Tarnish-resistant electroless nickel plating
Springs:	Beryllium copper with 50 millionths inch gold plating
Center conductors:	50 millionths inch gold plating






Ordering Information

Description					Catalog Number
ProPatch® Miniature (PPM) Panels					
2x48	1 RU	LCC	Normalling	AES and Analog Video	PPM1248-LCC-BK
				High-Performance, HD	PPM1248-LCCHP-BK
			Non-Normalling	High-Performance	PPM1248-LCCNN-BK
		1.0/2.3 jack	Normalling	AES and Analog Video	PPM1248-1023-BK
				High-Performance, HD	PPM1248-1023HP-BK
			Non-Normalling	High-Performance	PPM1248-1023NN-BK
	1.5 RU	LCC	Normalling	AES and Analog Video	PPM15248-LCC-BK
				High-Performance	PPM15248-LCCHP-BK
			Non-Normalling	High-Performance	PPM15248-LCCNN-BK
		1.0/2.3 jack	Normalling	AES and Analog Video	PPM15248-1023-BK
				High-Performance	PPM15248-1023HP-BK
			Non-Normalling	High-Performance	PPM15248-1023NN-BK
4x48	1.5 RU	LCC	Normalling	AES and Analog Video	PPM15448-LCC-BK
				High-Performance	PPM15448-LCCHP-BK
			Non-Normalling	High-Performance	PPM15448-LCCNN-BK
		1.0/2.3 jack	Normalling	AES and Analog Video	PPM15448-1023-BK
				High-Performance	PPM15448-1023HP-BK
			Non-Normalling	High-Performance	PPM15448-1023NN-BK

SHDC Jack

Features

- Switchable between terminating and non-terminating normalled-through
- Non-normalled jack offered in same jack housing, looping plug available for circuit patching

	Normalling AES	Straight-Through HD	Normalling HD
LCC	SHDC-LCC	SHDC-LCC-NN	SHDC-LCC-HP
			
1.0/2.3	SHDC-1023	SHDC-1023-NN	SHDC-1023-HP
	