



- Third Party Verified Category 6A Link and Channel
- Precision and Reliable Tool-Less Termination
- True 10GBASE-T Application Assurance
- Bulk and Green Packaging Reduces Excess Waste on the Job

**FEATURES**

**Jack**

- IDC formation allows each pair to be segregated pair-to-pair NEXT
- Unique tool-less termination cap allows cable to be laced without disruption of the pairs, maintaining the twist integrity for optimized performance
- Superior Strain Relief - Locking IDC stuffer cap ensures termination retention, securing wires during installation

**Patch Cord**

- 2-piece conductor sled design controls NEXT

**Cable**

- Tuned to deliver maximum Category 6A and 10GbE performance
- Constructed with polyester backed aluminum foil shield protecting from AXT and EMI

**Patch Panel**

- Durable 14 gauge steel construction
- Integral cable management and strain relief shelf

**STANDARDS**

- TIA-568-C.2 Category 6A Link and Channel
- ISO 11801/60603-7 Category 6A component
- UL Listed ISO/IEC 11801 and EN50173 second edition requirements for transfer impedance and shield effectiveness
- IEC 60603-7-5 (draft) specifications for Category 6 and Category 5e screened
- Current Capacity: Exceeds current levels for PoE and PoE+ IEEE 802.3at
- UL Listed 1863

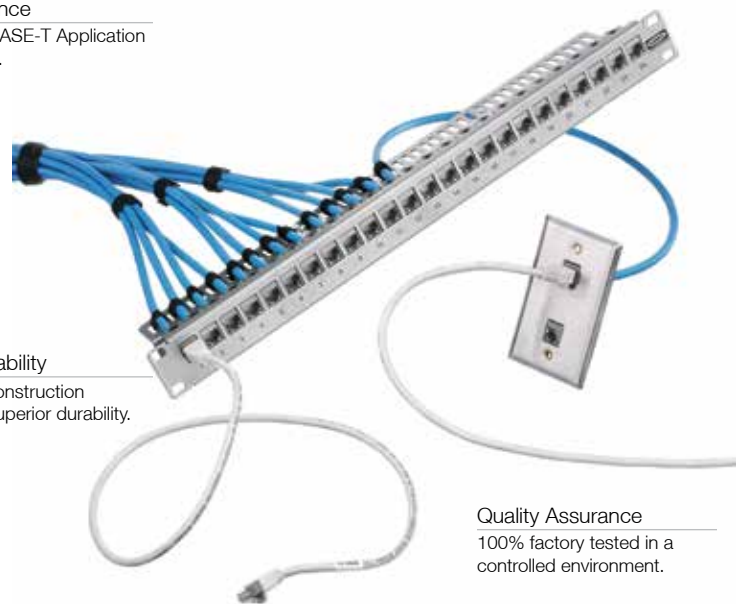


**Ascent Shielded Category 6A System**

Performance  
True 10GBASE-T Application Assurance.

Jack Durability  
Die-cast construction provides superior durability.

Quality Assurance  
100% factory tested in a controlled environment.



**NEXTSPEED®** Ascent Shielded Category 6A is a tuned system of structured cabling components designed and balanced to operate together to deliver headroom beyond 500MHz and provide the highest level of reliability in the industry with added protection against AXT, external noise and EMI.

The **NEXTSPEED®** Ascent Shielded Category 6A system delivers 28dB of AXT headroom, exceeding all TIA and ISO performance requirements, eliminating the need for AXT testing.

**NEXTSPEED®** Ascent Shielded Category 6A cable is constructed with round .290 O.D. allowing for more cable capacity inside conduit, ladder racks, raceway channels and cable management ducts.

The Ascent shielded system provides a transparent signal path for current and future applications and trends in the datacenter, reducing installation time and providing a robust infrastructure solution for mission critical applications.

**APPLICATIONS**

- 10GBASE-T (10-Gigabit Ethernet)
- Consolidation, Server Clustering and Scalability Virtualization
- Mass Data Storage, Storage Area Networks (SAN)
- Web enablement of applications (WEB 2.0)
- Voice Protocol – VoIP, SIP, SCCP, MGCP
- Video Protocol – IPTV, RTSP, RTP



**NEXTSPEED® Shielded Category 6A Jacks**

Unit of Measure	A-Wired	B-Wired
2 per bag	<b>SJ6A2A</b>	<b>SJ6A2B</b>
24 per bag	<b>SJ6A24A</b>	<b>SJ6A24B</b>



**NEXTSPEED® Shielded Patch Panels, Unloaded**

Ports	Height Inches (mm)	Width Inches (mm)	Rack Units	Type	Color	Catalog No.
24	1.75" (45)	19" (483)	1	Flat	Silver	<b>PSJ24S</b>
24	1.75" (45)	19" (483)	1	Flat	Black	<b>PSJ24BK</b>
48	3.50" (89)	19" (483)	2	Flat	Black	<b>PSJ48BK</b>
24	1.75" (45)	19" (483)	1	Angled	Black	<b>PSJ24AU</b>
48	3.50" (89)	19" (483)	2	Angled	Black	<b>PSJ48AU</b>



*Note: Jacks shown above are sold separately.*

**NEXTSPEED® Shielded Category 6A Patch Cords**

Unit of Measure	Catalog No.
1 patch cord	<b>PC6Ayyxx</b>

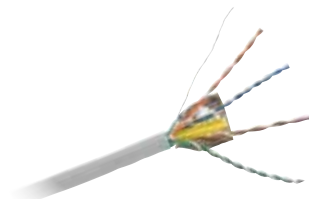
*yy = Standard Length: 03 (3'), 05 (5'), 07 (7'), 10 (10'), 15 (15'), 20 (20'), 25 (25').  
xx = Color: B (Blue), BK (Black), GY (Gray), and Y (Yellow).  
Made-to-order lengths are available from 30ft to 75ft in 5ft increments.*



**NEXTSPEED® Ascent 10GbE FTP Cable, 4-Pair**

Color	Plenum Spool	Riser Spool
Blue	<b>C6AFTSPB</b>	<b>C6AFTSRB</b>
Gray	<b>C6AFTSPGY</b>	<b>C6AFTSRGY</b>
White	<b>C6AFTSPW</b>	<b>C6AFTSRW</b>
Yellow	<b>C6AFTSPY</b>	<b>C6AFTSRY</b>

*Note: All category rated cable is packaged in 1000 foot quantities.*



**NEXTSPEED® Ascent Shielded Category 6A, Trunk Cable Assemblies**

BIDnet Pre-Terminated Copper Trunk Assemblies improve air flow in the datacenter, decrease installation time and will supply superior performance.

- Simplifies installation time by 75%
- Reduces initial installation cost by 30%
- 100% factory tested and assembled
- Mission Critical 25-Year Warranty

*Note: Contact your local distributor or Hubbell's customer service for additional information on BIDnet Pre-Terminated Copper Trunk Assemblies.*

