

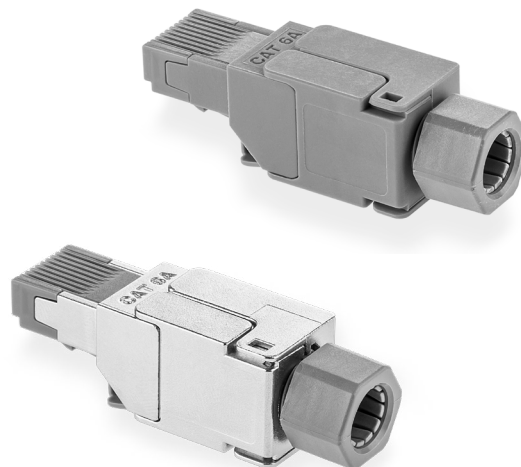
Product

Specifications

Field-Installable Modular Plugs

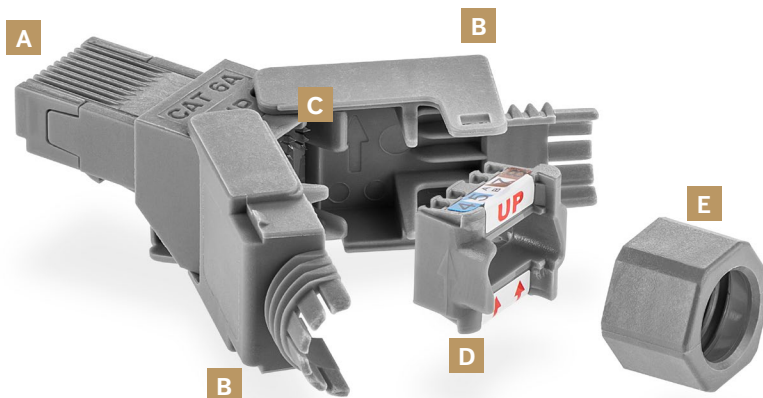
KEY FEATURES

- Guarantees ISO/IEC 11801 and ANSI/TIA-568-C.2 patch cord specifications compliance
- Available in Screened and Unscreened versions
- Screened option offers overall solid-metal shielding design for "360-degree" coverage
- Rated for at least 750 insertion cycles
- Toolless field termination
- PCB-based electrical design
- Compatible with solid and stranded conductors
- Easy-to-read T568A/B wiring scheme color-coded label



EXPLODED VIEW:

- A.** RJ-45 Plug
- B.** Jaws
- C.** PCB
- D.** T568A/B Wire Holder
- E.** Locking Nut



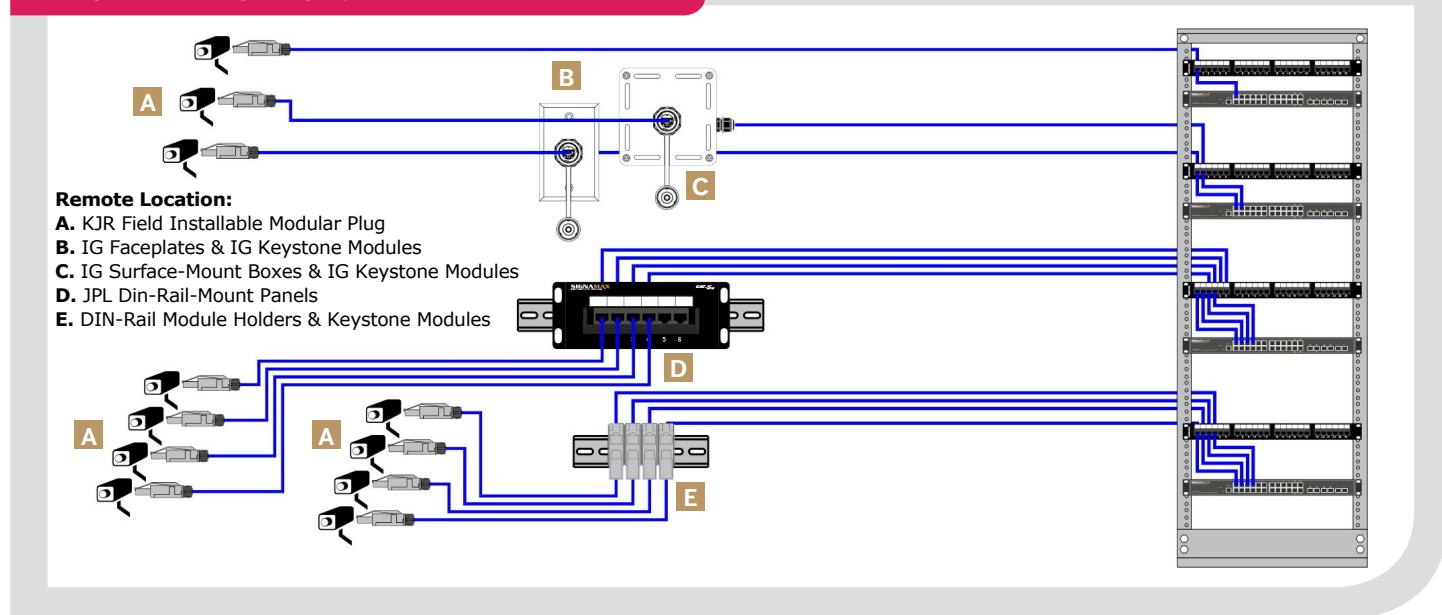
ORDERING INFORMATION

PART NO.	DESCRIPTION
SCREENED	
KRJS45FT-C6A	Category 6A Screened Field-Installable Modular Plug
KRJS45FT-C6C	Category 6 Screened Field-Installable Modular Plug
KRJS45FT-C5E	Category 5e Screened Field-Installable Modular Plug
UNSCREENED	
KRJ45FT-C6A	Category 6A Unscreened Field-Installable Modular Plug
KRJ45FT-C6C	Category 6 Unscreened Field-Installable Modular Plug
KRJ45FT-C5E	Category 5e Unscreened Field-Installable Modular Plug

Product Specifications

Field-Installable Modular Plug

TYPICAL APPLICATION:



SPECIFICATIONS

TRANSMISSION PERFORMANCE

ANSI/TIA-568-C.2: meet category 5e (1-100 MHz), category 6 (1-250 MHz), and category 6A patch cord requirements
IEC/ISO 11801: meet category 5 (1-100 MHz), category 6 (1-250 MHz), and category 6_A (1-500 MHz) requirements

TRANSMISSION MEDIA

Unscreened (U/UTP) twisted pair
Screened (U/STP, F/UTP, F/STP, S/UTP, S/STP, SF/UTP, SF/STP) twisted pair
Min Cable Diameter: Cat 6 & 5e - 4 mm (0.16 in) Cat 6A - 6 mm (0.24 in)
Max Cable Diameter: Cat 6 & 5e - 6 mm (0.24 in) Cat 6A - 8 mm (0.32 in)

WIRING SCHEME

ANSI/TIA-568-C.2: T568A & T568B
ISO/IEC 11801 2nd Ed.: 8-position pin/pair assignment (1-2/3-6/4-5/7-8)

ELECTRICAL

Insulation Resistance: Min 500 MOhm @ 100 Vdc
Dielectric Withstanding Voltage:
1,000 Vdc/ac peak contact-to-contact @ 60 Hz for 1 min
1,500 Vdc/ac peak contact-to-panel @ 60 Hz for 1 min (screened only)

MECHANICAL

Mating Cycle Life: Min 750 cycles
IDC Wire Gauge: 23 to 26 AWG

CONSTRUCTION

Housing:
Screened: Zinc-alloy
Unscreened: High-impact, flame-retardant plastic, UL 94V-0
Contact Pin: Phosphor bronze alloy plated with 50 µin of gold
IDC: 110 type, phosphor bronze alloy with 100 µin 100% tin alloy

DIMENSIONS

1.96" L x 0.54" W x 0.59" H (49.7 mm x 13.8 mm x 15.0 mm)

ENVIRONMENTAL CONDITIONS

Operation: 14 °F to 140 °F (-10 °C to 60 °C)
Storage: -40 °F to 158 °F (-40 °C to 70 °C)
Operating RH: 93% Max (non-condensing)

WARRANTY

5 - Year Limited Component

