

1) CONSTRUCTION:

CONDUCTOR:	20 AWG STRANDED 10/30 TINNED COPPER	NOM. DIA.	.037"
INSULATION:	POLYVINYLCHLORIDE, .016" NOM. WALL THICKNESS		.069"
CABLE:	(3) INSULATED CONDUCTORS TWISTED TOGETHER TO FORM A CABLE CORE		.148"
SHIELD:	ALUMINIZED POLYESTER FOIL SHIELD (FOIL OUT, 100% COVERAGE) WITH A 22 AWG 7/30 STRANDED TINNED COPPER DRAIN WIRE CONTACTING THE METALIZED SURFACE FOR EASY TERMINATION.		.151"
JACKET:	POLYVINYLCHLORIDE, CHROME GRAY, .038" NOM. WALL THICKNESS	OVERALL CABLE DIAMETER	.227"

2) PHYSICAL PROPERTIES:

TEMPERATURE RATING, MAX.	80°C, 90°C & 105°C
TEMPERATURE RATING, MIN.	-20°C
WT./M', NOM., NET.	30.3 LBS.
JACKET IS SUNLIGHT RESISTANT	

3) ELECTRICAL CHARACTERISTICS:

CAPACITANCE, MUTUAL, NOM.	46 PF/FT
CAPACITANCE, GROUNDED, NOM.	83 PF/FT
DIELECTRIC WITHSTANDING, MIN.	1500V RMS
VOLTAGE RATING, MAX.	300V
D.C. RESISTANCE, MAX.	10.5 Ω/1,000'

4) AGENCY APPROVALS:

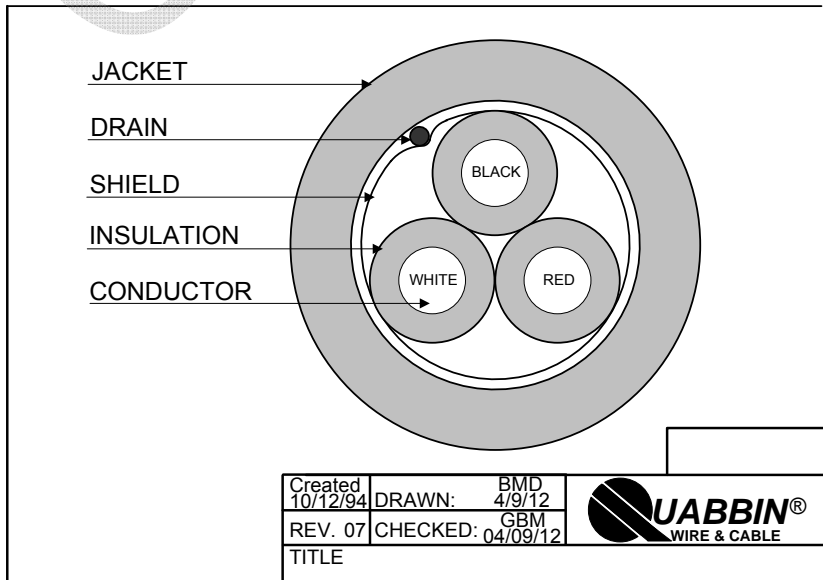
- NEC (UL) TYPE PLTC 105C 300V
- NEC (UL) TYPE ITC 105C 300V
- UL AWM STYLE 2464 80C 300V
- CSA FAS 105 FT4
- CSA AWM FT4 90C 300V

5) APPLICATION:
 PROCESS SYSTEM INTERCONNECT. POWER LIMITED TRAY CABLE, INSTRUMENTATION TRAY CABLE. CLASS 3 CIRCUITS. RoHS COMPLIANT MATERIALS.

6) PRINT:
 QUABBIN 0220R (UL) TYPE PLTC OR ITC 20 AWG 105C SUN RES OR AWM 2464 -- CSA LL66965 FAS 105 20 AWG 3 CONDUCTOR FT4 OR AWM I/II A/B 90C 300V FT4 -- RoHS -- **(LOT DESIGNATOR)**

7) COLOR CODE:
 1. BLACK
 2. RED
 3. WHITE

8) PACKAGING
 TO BE PACKAGED AS PER QWC'S STANDARD PACKAGING



Created 10/12/94	DRAWN: BMD 4/9/12	
REV. 07	CHECKED: GBM 04/09/12	
TITLE		
3/C 20 AWG -- TYPE PLTC, TYPE ITC, AWM 2464, CSA FAS, AWM FT4 CABLE -- SHIELDED		
QUABBIN P/N	0220	1 of 1

CUSTOMER APPROVAL:

DATE: