

1) CONSTRUCTION:

CONDUCTOR:	18 AWG 16/30 STRANDED TINNED COPPER	NOM. DIA.	.045"
INSULATION:	POLYVINYLCHLORIDE, .016" NOM. WALL THICKNESS		.077"
CABLE:	(3) INSULATED CONDUCTORS TWISTED TOGETHER WITH A LEFT HAND LAY TO FORM A CABLE CORE		.166"
SHIELD:	ALUMINIZED POLYESTER FOIL SHIELD (FOIL OUT, 100% COVERAGE) WITH A 20 AWG 10/30 STRANDED TINNED COPPER DRAIN WIRE CONTACTING THE METALIZED SURFACE FOR EASY TERMINATION.		.169"
JACKET:	POLYVINYLCHLORIDE, CHROME GRAY, .038" NOM. WALL THICKNESS	OVERALL CABLE DIAMETER	.245"

2) PHYSICAL PROPERTIES:

TEMPERATURE RATING, MAX.	80°C, 90°C & 105°C
TEMPERATURE RATING, MIN.	-20°C
WT./M', NOM., NET.	38.9 LBS.
JACKET IS SUNLIGHT RESISTANT	

3) ELECTRICAL CHARACTERISTICS:

CAPACITANCE, MUTUAL, NOM.	51 PF/FT
CAPACITANCE, GROUNDED, NOM.	93 PF/FT
DIELECTRIC WITHSTANDING, MIN.	1500V RMS
VOLTAGE RATING, MAX.	300V
D.C. RESISTANCE, MAX.	6.7 Ω/1000'

4) AGENCY APPROVALS:

- NEC (UL) TYPE PLTC 105C 300V
- NEC (UL) TYPE ITC 105C 300V
- UL AWM STYLE 2464 80C 300V
- CSA FAS 105 FT4
- CSA AWM FT4 90C 300V

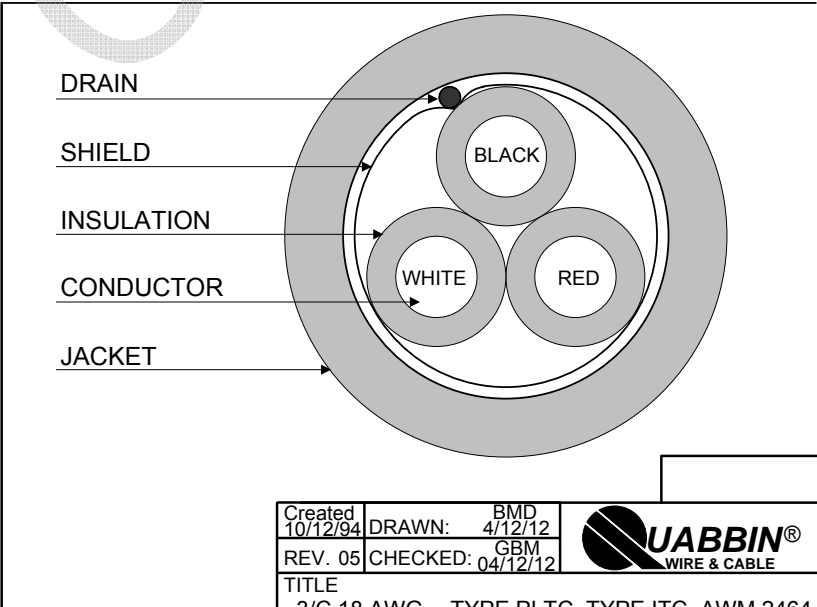
5) APPLICATION: PROCESS SYSTEM INTERCONNECT. POWER LIMITED TRAY CABLE, INSTRUMENTATION TRAY CABLE, CLASS 3 CIRCUITS. RoHS COMPLIANT MATERIALS.

6) PRINT: QUABBIN 0225R (UL) TYPE PLTC OR ITC 18 AWG 105C SUN RES OR AWM 2464 -- CSA LL66965 FAS 105 18 AWG 3 CONDUCTOR FT4 OR AWM I/II A/B 90C 300V FT4 -- RoHS -- **(LOT DESIGNATOR)**

7) COLOR CODE:

1. BLACK
2. RED
3. WHITE

8) PACKAGING
TO BE PACKAGED AS PER QWC'S STANDARD PACKAGING



Created 10/12/94	DRAWN: BMD 4/12/12
REV. 05	CHECKED: GBM 04/12/12



TITLE
3/C 18 AWG -- TYPE PLTC, TYPE ITC, AWM 2464 -- CSA FAS, AWM FT4 CABLE -- SHIELDED

QUABBIN P/N	0225	1 of 1
-------------	-------------	--------

CUSTOMER APPROVAL: _____ DATE: _____