

1) CONSTRUCTION: NOM. DIA.  
 CONDUCTOR: 18 AWG 16/30 STRANDED TINNED COPPER .045"  
 INSULATION: POLYVINYLCHLORIDE, .016" NOM. WALL THICKNESS .077"  
 CABLE: (5) COLOR CODED SINGLES TWISTED TOGETHER WITH FILLER AND WRAPPED WITH A CLEAR POLYESTER BINDER TO FORM A CABLE CORE .211"  
 RIPCORD: INCLUDED UNDER JACKET FOR STRIPPING  
 JACKET: POLYVINYLCHLORIDE, CHROME GRAY, .032" NOM. WALL THICKNESS. .275"  
OVER ALL CABLE DIAMETER

2) PHYSICAL PROPERTIES:  
 TEMPERATURE RATING, MAX. 105°C  
 TEMPERATURE RATING, Min.. -20°C  
 WT./M', NOM., NET. 52.2 LBS.

3) ELECTRICAL CHARACTERISTICS:  
 CAPACITANCE, MUTUAL, NOM. 25 PF/FT.  
 DIELECTRIC WITHSTANDING, MIN. 1500V RMS  
 VOLTAGE RATING, MAX. 600V  
 D.C. RESISTANCE, MAX. PER ASTM B286 7.15 Ω/1000'

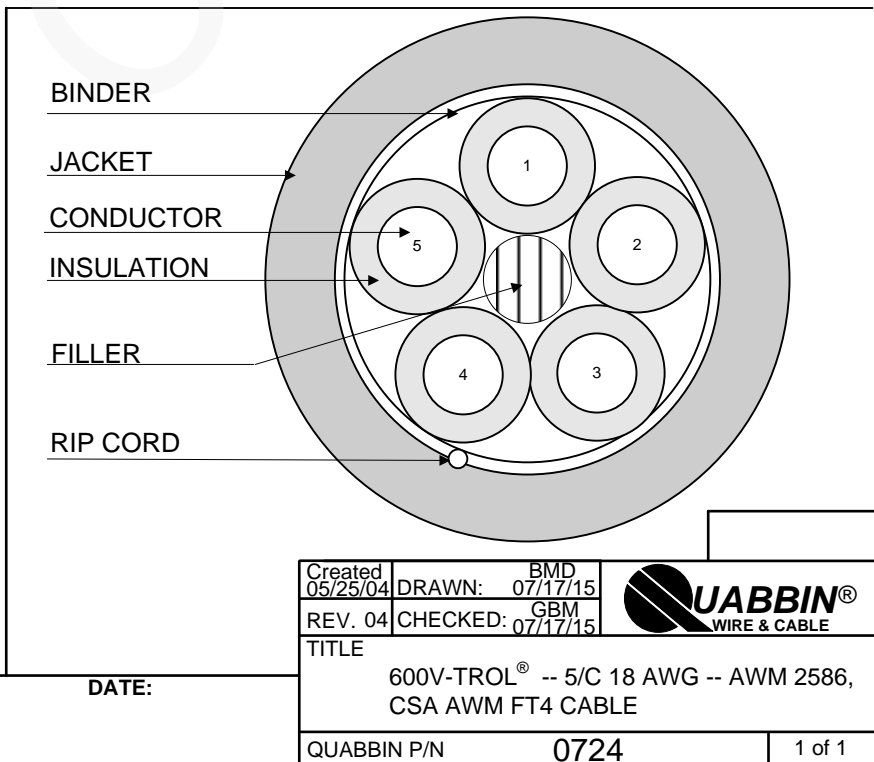
4) AGENCY APPROVALS:  
 CSA AWM FT4  
 UL AWM STYLE 2586 105C 600V

5) APPLICATION:  
 INDUSTRIAL CONTROLS, MEDICAL ELECTRONICS AND OTHER APPLICATIONS WHERE A COMPACT 600V RATED CABLE IS REQUIRED. RoHS COMPLIANT MATERIALS.

6) PRINT:  
 600V-TROL® E69976  AWM 2586 VW-1 -- CSA LL51726 AWM I/II A/B 105C 600V FT4 -- RoHS --  
**(LOT DESIGNATOR)**

7) COLOR CODE:  
 1. BLACK  
 2. BROWN  
 3. RED  
 4. ORANGE  
 5. YELLOW

8) PACKAGING  
 TO BE PACKAGED AS PER QWC'S  
 STANDARD PACKAGING



CUSTOMER APPROVAL:

DATE: