

1) CONSTRUCTION:		NOM. DIA.
CONDUCTOR:	24 AWG 7/32 STRANDED TINNED COPPER	.024"
INSULATION:	LOW DENSITY POLYETHYLENE, .015" NOM. WALL THICKNESS	.054"
PAIRS:	COLOR CODED SINGLES TWISTED INTO PAIRS	.108"
CABLE:	(2) TWISTED PAIRS TWISTED TOGETHER TO FORM A CABLE CORE.	.164"
SHIELD:	ALUMINIZED POLYESTER FOIL SHIELD (FOIL OUT, 100% COVERAGE) WITH A 24 AWG STRANDED TINNED COPPER DRAIN WIRE CONTACTING THE METALIZED SURFACE FOR EASY TERMINATION.	.167"
JACKET:	POLYVINYLCHLORIDE, CHROME GRAY, .032" NOM. WALL THICKNESS	
	OVERALL CABLE DIAMETER	.235"

2) PHYSICAL PROPERTIES:	
TEMPERATURE RATING, MAX.	60°C & 75°C
TEMPERATURE RATING, MIN.	-20°C PER UL SUBJECT 13 (COLD BEND)
WT./M', NOM., NET.	23.6 LBS.

3) ELECTRICAL CHARACTERISTICS:	
CAPACITANCE, MUTUAL, NOM.	14.0 PF/FT.
CAPACITANCE, GROUNDED, NOM.	25.9 PF/FT.
CHARACTERISTIC IMPEDANCE, NOM.	110 Ω
DIELECTRIC WITHSTANDING, MIN	1500V RMS
VOLTAGE RATING, MAX.	300V
D.C. RESISTANCE, MAX. PER ASTM B286	26.2 Ω/1000'

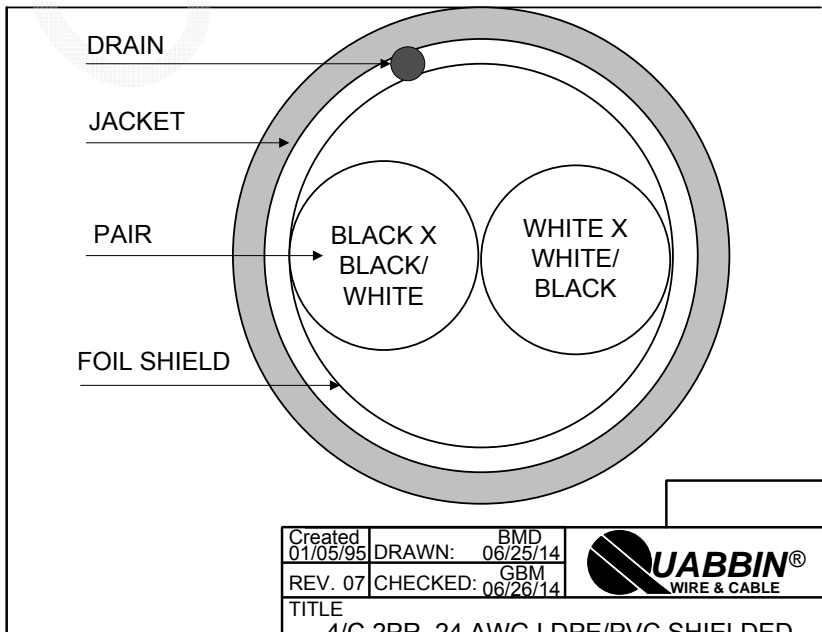
4) AGENCY APPROVALS:
 NEC (UL) TYPE CM
 UL AWM STYLE 2448
 CSA TYPE CMG

5) APPLICATION:
 LOW CAPACITANCE RS-232 COMPUTER INTERCONNECT, EXTENDED DISTANCE CABLE.
 RoHS COMPLIANT MATERIALS.

6) PRINT:
 QUABBIN 8504 (UL) TYPE CM 24 AWG 75C OR AWM 2448 -- LOW VOLTAGE COMPUTER CABLE --
 CSA LL51726 TYPE CMG 60C -- RoHS -- **(LOT DESIGNATOR)**

7) COLOR CODE:
 1) BLACK X BLACK/WHITE
 2) WHITE X WHITE/BLACK

8) PACKAGING:
 TO BE PACKAGED AS PER QWC'S
 STANDARD PACKAGING



Created 01/05/95	DRAWN: BMD 06/25/14	
REV. 07	CHECKED: GBM 06/26/14	
TITLE 4/C 2PR. 24 AWG LDPE/PVC SHIELDED -- TYPE CM, AWM 2448, CSA CMG		
QUABBIN P/N	8504	1 of 1

CUSTOMER APPROVAL: _____ DATE: _____