

1) CONSTRUCTION:		NOM. DIA.
CONDUCTOR:	26 AWG 7/34 STRANDED TINNED COPPER	.019"
INSULATION:	POLYPROPYLENE, .010" NOM. WALL THICKNESS	.039"
PAIRS:	COLOR CODED SINGLES TWISTED INTO PAIRS	.078"
CABLE:	(2) TWISTED PAIRS TWISTED TOGETHER AND WRAPPED WITH A CLEAR POLYESTER BINDER TO FORM A CABLE CORE.	.113"
SHIELD:	AN OVERALL ALUMINIZED POLYESTER FOIL SHIELD (FOIL OUT, 100% COVERAGE) WITH A 26 AWG 7/34 STRANDED TINNED COPPER DRAIN WIRE IN CONTACT WITH THE METALIZED SURFACE SHALL BE APPLIED OVER THE CABLE CORE.	.116"
JACKET:	POLYVINYLCHLORIDE, BEIGE, .022" NOM. WALL THICKNESS	.170"
	OVERALL CABLE DIAMETER	.180" MAX. O.D. (BY PI TAPE)

2) PHYSICAL PROPERTIES:
 TEMPERATURE RATING, MAX. 60°C
 WT./M', NOM., NET. 14.0 LBS.

3) ELECTRICAL CHARACTERISTICS:
 SEE PAGE 2

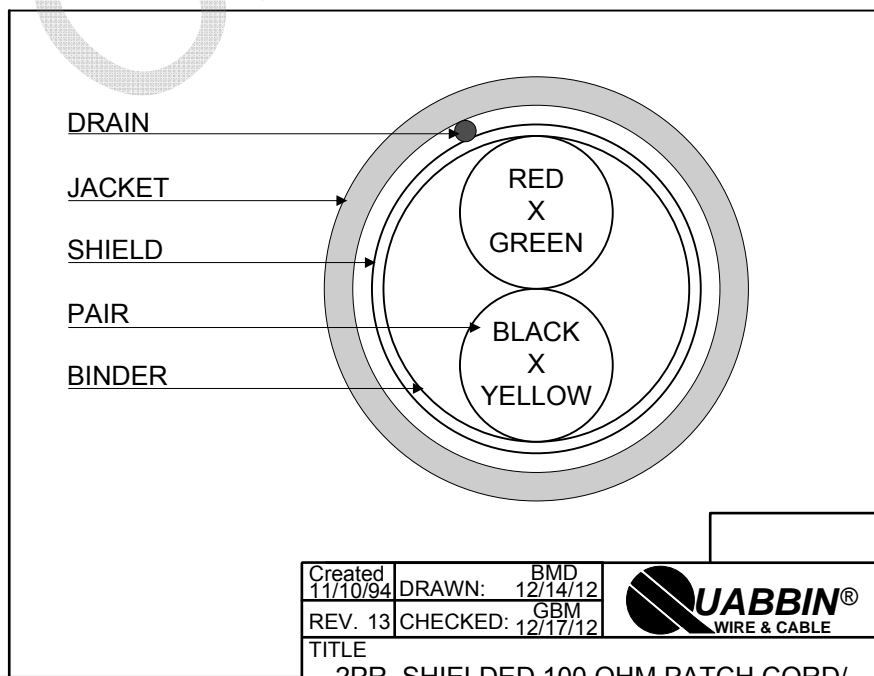
4) AGENCY APPROVALS:
 NEC (UL) TYPE CMR
 CEC C(UL) TYPE CMR
 UL AWM STYLE 2552

5) APPLICATION:
 SHIELDED FLEXIBLE PATCH/JUMPER CABLE TO SUPPORT CATEGORY 5 APPLICATIONS.
 RoHS COMPLIANT MATERIALS.

6) PRINT:
 QUABBIN DATAMAX SCREENED ISO 11801/EN50173 100 OHM PATCH CORD/JUMPER CAT 5
 P/N 9604 -- C(UL)US TYPE CMR 26 AWG SHIELDED OR AWM 2552 -- RoHS -- **(LOT DESIGNATOR)**
(SEQUENTIAL FOOTAGE)

7) COLOR CODE:
 1. RED X GREEN
 2. BLACK X YELLOW

8) PACKAGING:
 TO BE PACKAGED AS PER QWC'S
 STANDARD PACKAGING



Created 11/10/94	DRAWN: BMD 12/14/12	
REV. 13	CHECKED: GBM 12/17/12	
TITLE 2PR. SHIELDED 100 OHM PATCH CORD/ JUMPER -- CATEGORY 5 -- TYPE CMR		
QUABBIN P/N	9604	1 of 2

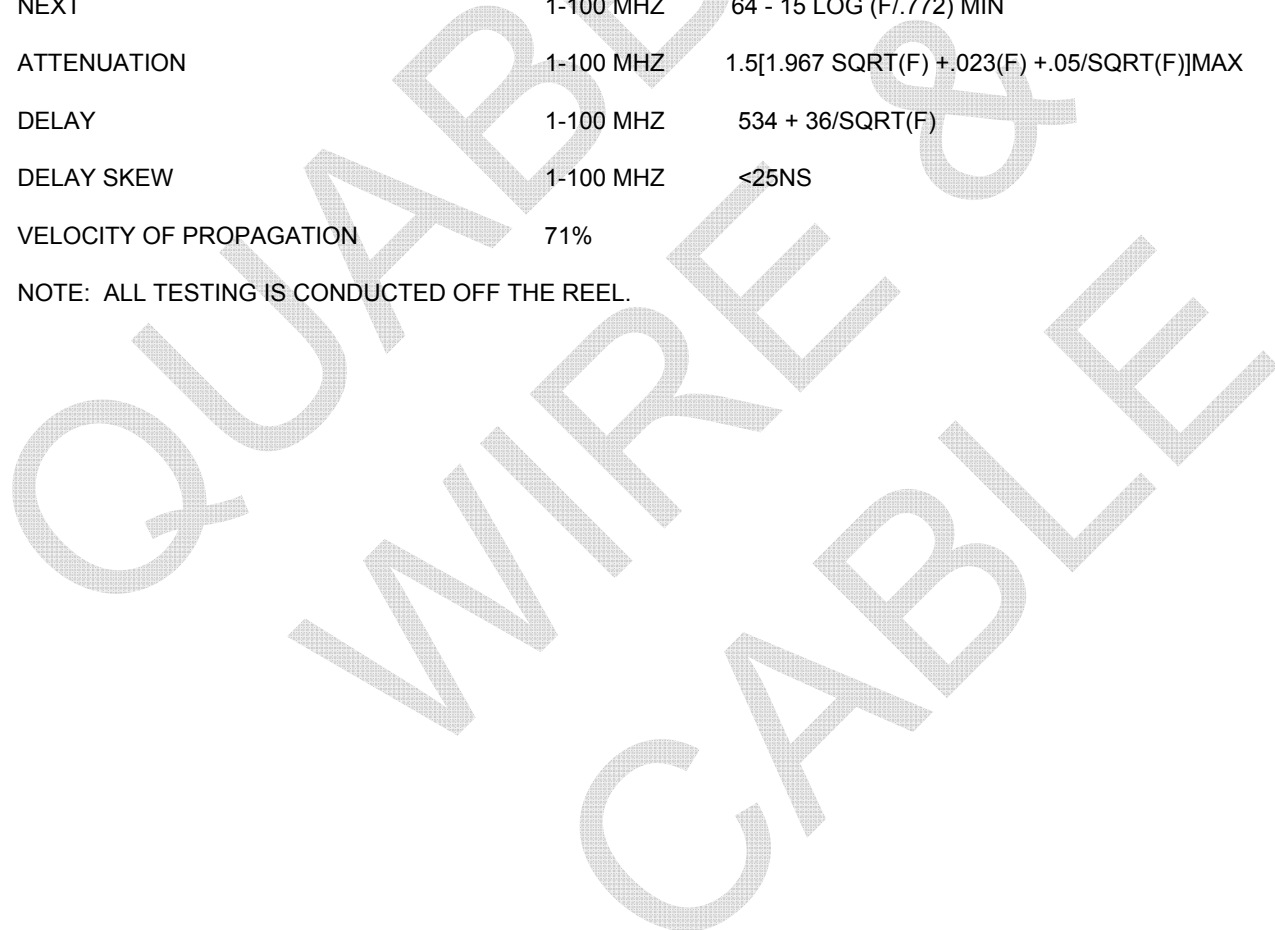
CUSTOMER APPROVAL: _____ DATE: _____

3) ELECTRICAL CHARACTERISTICS: (FOR 100m OF CABLE)

CAPACITANCE, MUTUAL 13.5 PF/FT. AT 1 MHZ
 DIELECTRIC WITHSTANDING, MIN 1500V RMS
 VOLTAGE RATING, MAX. 300V
 D.C. RESISTANCE, MAX. 42.6 Ω/1000'
 IMPEDANCE 100 +/- 15 Ω 1-100 MHZ
 IMPEDANCE, SMOOTHED 100 +/- 10 Ω TYPICAL 5 - 100 MHZ
 SRL 23 DB 1-20 MHZ
 23 - 10 LOG(F/20) 20-100 MHZ

PS NEXT 1-100 MHZ 62 - 15 LOG (F/.772) MIN
 NEXT 1-100 MHZ 64 - 15 LOG (F/.772) MIN
 ATTENUATION 1-100 MHZ 1.5[1.967 SQRT(F) +.023(F) +.05/SQRT(F)]MAX
 DELAY 1-100 MHZ 534 + 36/SQRT(F)
 DELAY SKEW 1-100 MHZ <25NS
 VELOCITY OF PROPAGATION 71%

NOTE: ALL TESTING IS CONDUCTED OFF THE REEL.



CUSTOMER APPROVAL:

DATE:

Created 11/10/94	DRAWN: BMD 12/14/12	
REV. 13	CHECKED: GBM 12/17/12	
TITLE 2PR. SHIELDED 100 OHM PATCH CORD/ JUMPER -- CATEGORY 5 -- TYPE CMR		
QUABBIN P/N	9604	2 of 2