

1) CONSTRUCTION:		NOM. DIA.
CONDUCTOR:	16 AWG 19/.0117 STRANDED TINNED COPPER	.057"
INSULATION:	POLYVINYLCHLORIDE, .016" NOM. WALL THICKNESS	.089"
CABLE:	(2) COLOR CODED SINGLES TWISTED TOGETHER TO FORM A CABLE CORE.	.178"
SHIELD:	ALUMINIZED POLYESTER FOIL SHIELD (FOIL IN, 100% COVERAGE) WITH A 18 AWG 16/30 STRANDED TINNED COPPER DRAIN WIRE CONTACTING THE METALIZED SURFACE FOR EASY TERMINATION.	.181"
JACKET:	POLYVINYLCHLORIDE, CHROME GRAY, .038" NOM. WALL THICKNESS	.257"
	OVERALL CABLE DIAMETER	

2) PHYSICAL PROPERTIES:	
TEMPERATURE RATING, MAX.	80°C, 90°C & 105°C
TEMPERATURE RATING, MIN.	-20°C
WT./M', NOM., NET.	42.9 LBS.
JACKET IS SUNLIGHT RESISTANT	

3) ELECTRICAL CHARACTERISTICS:	
CAPACITANCE, MUTUAL, NOM.	55 PF/FT.
CAPACITANCE, GROUNDED, NOM.	102 PF/FT.
DIELECTRIC WITHSTANDING, MIN	1500V RMS
VOLTAGE RATING, MAX.	300V
D.C. RESISTANCE, MAX.	4.35 Ω/1000'

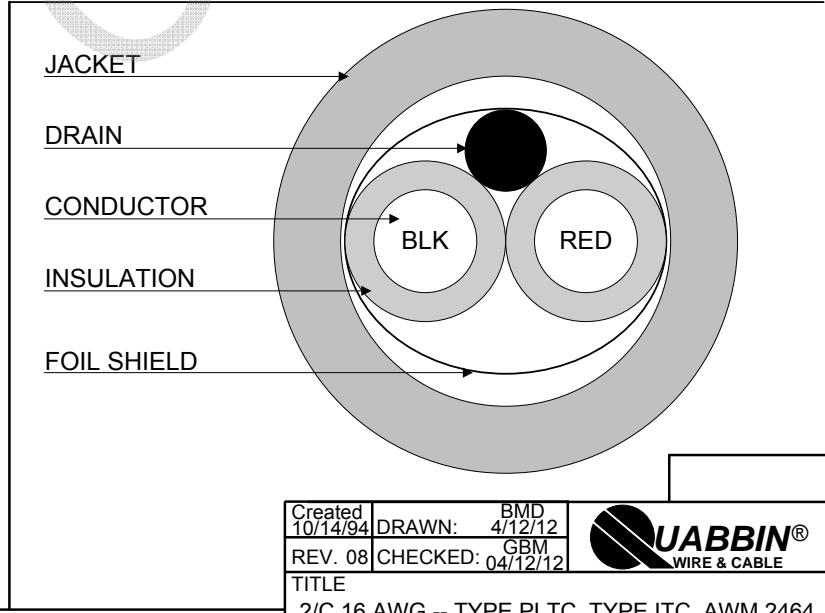
- 4) AGENCY APPROVALS:
- NEC (UL) TYPE PLTC 105C 300V
 - NEC (UL) TYPE ITC 105C 300V
 - UL AWM STYLE 2464 80C 300V
 - CSA FAS 105 FT4
 - CSA AWM FT4 90C 300V

5) APPLICATION:
 PROCESS SYSTEM INTERCONNECT. POWER LIMITED TRAY CABLE, INSTRUMENTATION TRAY CABLE, CLASS 3 CIRCUITS. RoHS COMPLIANT.

6) PRINT:
 QUABBIN 0175R (UL) TYPE PLTC OR ITC 16 AWG 105C SUN RES OR AWM 2464 -- CSA LL66965 FAS 105 16 AWG 2 CONDUCTOR FT4 OR AWM I/II A/B 90C 300V FT4 -- RoHS -- **(LOT DESIGNATOR)**

- 7) COLOR CODE:
1. BLACK
 2. RED

8) PACKAGING
 TO BE PACKAGED AS PER QWC'S STANDARD PACKAGING



Created 10/14/94	DRAWN: BMD 4/12/12
REV. 08	CHECKED: GBM 04/12/12



CUSTOMER APPROVAL:

DATE:

TITLE
 2/C 16 AWG -- TYPE PLTC, TYPE ITC, AWM 2464 -- CSA FAS, AWM FT4 CABLE -- SHIELDED

QUABBIN P/N	0175	1 of 1
-------------	------	--------