

1) CONSTRUCTION:

CONDUCTOR:	24 AWG 7/32 STRANDED TINNED COPPER	NOM. DIA.	.024"
INSULATION:	LOW DENSITY POLYETHYLENE, .025" NOM. WALL THICKNESS		.074"
CABLE:	COLOR CODED SINGLES TWISTED INTO A PAIR		.148"
SHIELD:	ALUMINIZED POLYESTER FOIL SHIELD (FOIL OUT, 100% COVERAGE) WITH A 24 AWG STRANDED TINNED COPPER DRAIN WIRE CONTACTING THE METALIZED SURFACE FOR EASY TERMINATION. A SECOND SHIELD OF 36 AWG TINNED COPPER BRAID (65% MINIMUM COVERAGE) SHALL BE APPLIED OVER THE FOIL SHIELD.		.174"
JACKET:	POLYVINYLCHLORIDE, CHROME GRAY, .032" NOM. WALL THICKNESS	OVERALL CABLE DIAMETER	.238"

2) PHYSICAL PROPERTIES:

TEMPERATURE RATING, MAX.	60°C & 75°C
TEMPERATURE RATING, MIN.	-20°C
WT./M', NOM., NET.	21.0 LBS.

3) ELECTRICAL CHARACTERISTICS:

CAPACITANCE, MUTUAL, NOM.	15.5 PF/FT.
CAPACITANCE, GROUNDED, NOM.	29.0 PF/FT.
DIELECTRIC WITHSTANDING, MIN	1500V RMS
VOLTAGE RATING, MAX.	300V
D.C. RESISTANCE, MAX. PER ASTM B286	26.2 Ω/1000'
CHARACTERISTIC IMPEDANCE, NOM.	100 Ω

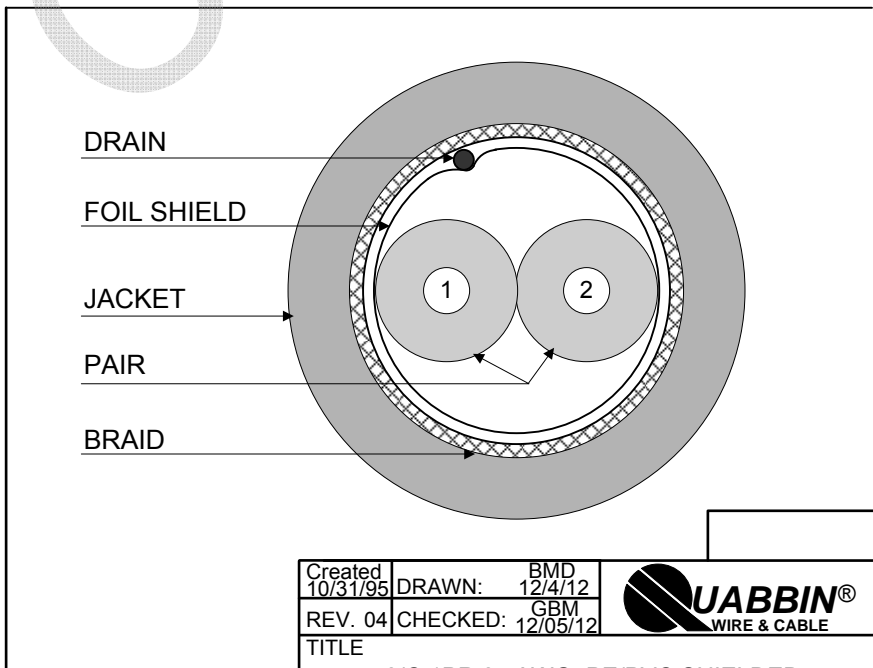
4) AGENCY APPROVALS:
 NEC (UL) TYPE CM
 UL AWM STYLE 2448
 CSA TYPE CMG

5) APPLICATION:
 LOW CAPACITANCE RS-422 AND RS-485 COMPUTER INTERCONNECT, EXTENDED DISTANCE CABLE.
 RoHS COMPLIANT MATERIALS.

6) PRINT:
 QUABBIN 8302R (UL) TYPE CM 24 AWG 75C SHIELDED OR AWM 2448 -- LOW VOLTAGE COMPUTER CABLE --
 CSA LL51726 CMG 60C -- RoHS -- **(LOT DESIGNATOR)**

7) COLOR CODE:
 1. BLACK X 2. BLACK/WHITE

8) PACKAGING:
 TO BE PACKAGED AS PER QWC'S
 STANDARD PACKAGING



Created 10/31/95	DRAWN: BMD 12/4/12	
REV. 04	CHECKED: GBM 12/05/12	
TITLE 2/C 1PR 24 AWG PE/PVC SHIELDED -- TYPE CM, AWM 2448, CSA CMG		
QUABBIN P/N	8302	1 of 1

CUSTOMER APPROVAL: _____ DATE: _____