

RCA Pin Connectors

RCAP-C Series (Straight Plug, Crimp Type)

Model	Suitable Cable		Center Pin	Sleeve	Boot	Die Set
	Canare	Belden (suggested)				
* RCAP-C25F	L-2.5CFB	1855A, 8218, 1417B, 1418B	B11014E	★ BN7029C	—	TCD-35CA
RCAP-C25HD	L-2.5CHD	—	B11015E	★ BN7129	—	TCD-35CA
RCAP-C3A	L-3C2VS, L-3C2V, V*-3C	—	B11014E	BN7003A	CB24	TCD-35CA
* RCAP-C3GS	GS-6	—	★ BN1093	★ BN7079	CB25	TCD-35D
RCAP-C3F	L-3CFB, LS-3CFB, V*-3CFB	—	B11015E	BN7003A	CB24	TCD-35CA
* RCAP-C42	—	1505F	B11016E	★ BN7011	—	TCD-31C
RCAP-C4A	LV-61S	8241, 8279, RG-59B/U	B11015E	BN7015A	CB25	TCD-4CA, TCD-451CA
RCAP-C4F	L-4CFB, LS-4CFB, V*-4CFB	1505A, 8212, 8241F, 9167, 9259, 9659	B11016E	BN7015A	CB25	TCD-4CA, TCD-451CA
RCAP-C53	L-4.5CHD	1694A, 9066, 9116, 9118, 9248	B11020D	★ BN7046	CB26	TCD-35CA
RCAP-C5A	L-5C2VS, L-5C2V, V*-5C	—	B11016E	BN7016	CB26	TCD-35CA
RCAP-C5F	L-5CFB, LS-5CFB, V*-5CFB	—	B11020D	B75004A	CB26	TCD-5CF, TCD-55FA
RCAP-C77	LV-77S	8281F	B11016E	B75004A	CB26	TCD-5CF, TCD-55FA

•Standard package (20pcs / 100pcs)

★Production by order. Please ask us for ordering lot.

- The crimp design ensures fast and reliable cable connection.
- The crimp tool for the RCAP-C can be used for the Canare crimp BNC plugs as well, thus saving on extra equipment.

Be sure to use the Canare crimping tool for installing connectors on cables.

RCA Soler Plugs

Model	Description
F-09	RCA Pin Plug
F-10	RCA Pin Plug (Long sleeve)

•Standard package (10pcs)

- Offer strong cable clamping that prevents severed lines.
- Suited to cables up to 6.0mm \varnothing in size.
- Accommodates cables up to 7.5mm \varnothing in size when spring removed.

RCA Recessed Bulkhead Receptacles

Model	Description
RJ-RU	Jack to Solder Cup
RJ-BCJRU	RCA (F) - BNC (F)
RJ-RUD	Jack to Solder Cup, Neutrik D Type
RJ-RUDB	Jack to Solder Cup, Neutrik D Type (Black)
RJ-BCJRUD	RCA (F) - BNC (F), Neutrik D Type
RJ-BCJRUDB	RCA (F) - BNC (F), Neutrik D Type (Black)

•Standard package (20pcs / 100pcs) by insulation color.

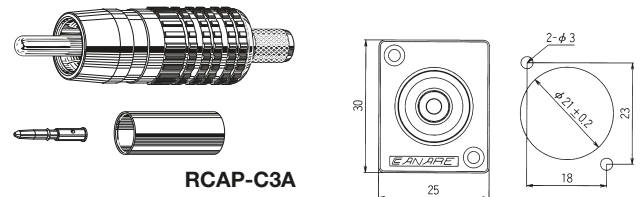
- Two types of flange are available: ITT XLR-F77 and Neutrik D compatible.
- VSWR is 1.1 or less up to 50MHz, enabling their use with HDTV and computer graphics video signals.
- Color-coded insulation enables users to easily distinguish between the R, G and B elements. Users can choose as required from five colors, including red, green, blue, yellow and white.

Phone Plugs

Model	Description
F-11	Mini Phone TS
F-12	Mini Phone TRS
F-15	1/4" TS Phone
F-16	1/4" TRS Phone

•Standard package (10pcs)

- Featuring a properly cable clamp system ensures long life reliability.
- Suited to cables up to 6.0mm \varnothing in size.
- Accommodates cables up to 7.5mm \varnothing in size when spring removed.

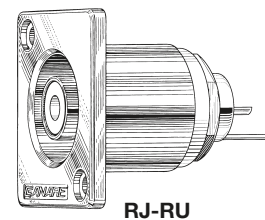


RCAP-C3A

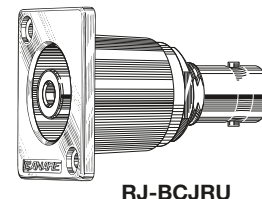


F-09

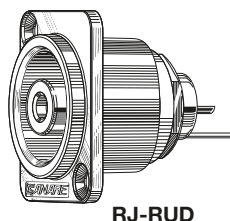
F-10



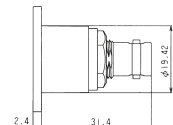
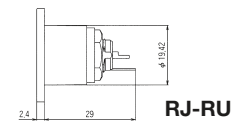
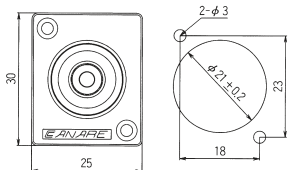
RJ-RU



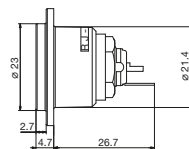
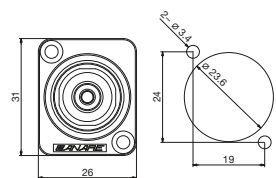
RJ-BCJRU



RJ-RUD



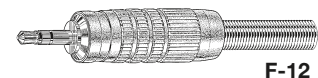
RJ-BCJRU



RJ-RUD



F-11



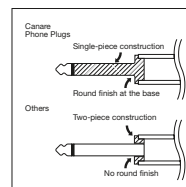
F-12



F-15



F-16



Canare's durable design