

# Multi-Circuit Configurable Vertical Power

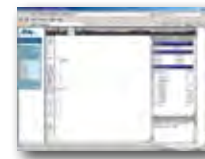
## Step 1 – Raceways



Available in four sizes to accommodate 3, 6, 8 or 9 power modules, modular raceways provide a rugged housing that allows the user to configure the right power distribution system for the application. Constructed of 18-gauge steel, each raceway features electrical knockouts for cable entry, an integral J-Box with removable cover and abundant cable lacing points along both sides.



Part #	# of Power Modules Accommodated	Overall Length	Fits Racks Coded
MPR-3	3	32"	<b>E</b>
MPR-6	6	56"	<b>N</b>
MPR-8	8	72"	<b>R</b>
MPR-9	9	80"	<b>V</b>



**MPR Configurator**  
mpr.middleatlantic.com

## Step 2 – Power Modules

All modules utilize a unique genderless connector to daisy-chain AC power to other modules on the same circuit. Modules fit any MPR Series raceway, are manufactured from 18-gauge steel and feature a durable black powder coat finish.



Part #	Amperage	Control	Status	Circuits
RLM-15	15	contact closure, local switch	LED & contact closure	1
RLM-20	20	contact closure, local switch	LED & contact closure	1
RLM-20IG	20/isolated (technical) ground	contact closure, local switch	LED & contact closure	1
M-15	15	–	–	1
M-2X15	15 dual or single circuit	–	–	1 or 2
M-20	20	–	–	1
M-2X20	20 dual or single circuit	–	–	1 or 2
M-20IG	20/isolated (technical) ground	–	–	1
M-2X20IG	20/isolated (technical) ground dual or single circuit	–	–	1 or 2
M-30TL-HW	30	–	–	1

### RLM Series Advanced Modules

The RLM Series power module can be controlled remotely by contact closure and uses an oversized 30 Amp relay for reliability. Units can also be powered on and off using the switch provided on the module. These modules additionally provide contact closure output for remote status as well as a local LED status display.

### M Series Basic Modules

The M Series power module is always on when connected to constant power and does not provide status indication. Dual duplex modules are available with installers' choice of 1 or 2 circuits (field configurable).

**HOT TIP!** The M module can be switched inexpensively via the RLM modules when connected with a JMS Series master/slave jumper.

### M Series 30 Amp Hardwired Module

The M-30TL-HW 30 Amp, hardwired always on module mounts in any MPR raceway. This basic, hardwired module will allow addition of a single unswitched outlet, 30 Amp circuit to any MPR system (NEMA L5-30R outlet). Must be field wired.

**HOT TIP!** Fan Control Modules available, see pg. 121



Multi-Circuit Configurable Vertical Power

# Controllable Units

## RLM Series Advanced Stand-Alone Modules Includes SignalSafe™ Power Cord Technology

The RLM Series power module can be controlled remotely by any maintained contact closure (including the USC-6R) and uses an oversized 30 Amp relay for reliability. Units can also be powered on and off using the switch provided on the module. These modules additionally provide contact closure output for remote status as well as a local LED status display.



RoHS  
Intertek  
Spec. #  
**96-01062**  
for full  
product  
info.

## 30 Amp Hardwired Stand-Alone Modules

30 Amp stand alone power modules provide switchable power distribution for components requiring 30 Amp power. These modules can be controlled locally or remotely by using Middle Atlantic Products' Universal Sequencing Controller, model # USC-6R or by any controller that sends 12 volt DC or contact closure outputs.

Part #	Amperage	Controls	Status
RLM-15-1C	15 Amp	contact closure, local switch	LED & contact closure
RLM-20-1C	20 Amp	contact closure, local switch	LED & contact closure
RLM30-L530-1	30 Amp*	contact closure, local switch	LED & contact closure
RLM30-L520-1	20 Amp*	contact closure, local switch, 12VDC	LED & contact closure

\*Twistlock receptacles



RoHS  
Intertek  
Spec. #  
**96-01007**  
for full  
product  
info.

## Pre-Configured MPR Series Power Distribution

Designed to save installation time, the factory-assembled MPR raceways utilize six power modules. These twelve outlet vertical strips connect to one or two 20 Amp circuits\* and feed six 20 Amp duplexes (12 outlets). Each duplex can be independently controlled with the USC-6R Universal Sequencing Controller, or with any other sequencing controller that provides a maintained switch closure output. The PCR Series pre-configured raceways are 56" long, terminate in an integral junction box, are manufactured using 18-gauge steel and feature a durable black powder coat finish.



PCR-2X320

RoHS  
Intertek  
Spec. #  
**96-961**  
for full  
product  
info.

Part #	Circuit*	Termination	Overall Length	Fits Racks Coded
PCR6	20 Amp (1)	J-Box	56"	N
PCR-2X320	20 Amp (2)	J-Box	56"	N

\*capable of up to 6 circuits when used with additional T Series tails.

