

Rackmount LCD Keyboard and LCD Rackmount

Rackmount LCD Keyboard

The Rackmount LCD Keyboard and Touchpad can be installed wherever rackmount control and system monitoring is required and can be used for a wide range of applications including network security and system performance monitoring. The 17" LCD monitor is capable of supporting 1280 x 1024 screen resolution, and is also available with an 8 or 16 port KVM switch. With its space saving, single rackspace design and dual-slide functionality, the rackmount LCD monitor can reside in the open position for system monitoring while the keyboard is in the closed position.

These units feature rear articulating cable carriers for strain relief and a bright active matrix LCD display for ergonomic viewing of monitoring applications. Standard 105 key keyboard with integrated touchpad. 6' connector cable included, and auto detects 120V or 240V power. This unit has a range of front to rear mounting of 18-1/4" to 27-3/4" (overall depth is 24-1/2", this unit will extend through the back of shallower racks). Works internationally with customer supplied cord.

Part #	Screen Size	Resolution	Racking Height	KVM Switch	PS/2/USB Cords Included
RM-KB-LCD17	17"	1280 x 1024	1-3/4" (1 rackspace)	–	–
RM-KB-LCD17X8KVM	17"	1280 x 1024	1-3/4" (1 rackspace)	8 port	4
RM-KB-LCD17X16KVM	17"	1280 x 1024	1-3/4" (1 rackspace)	16 port	8
PS2/USB-4C	PS/2 and USB cables, 4 pieces				



rear view of RM-KB-LCD17X8KVM



includes PS/2 and USB cables

Now available with KVM Switch!

EIA/TIA Compliant

 Intertek
 Spec. # 96-01025 for full product info.



RM-KB-LCD17



shown in closed position



screen opens with keyboard retracted for monitoring

LCD Rackmount

Your choice of five mounting styles

- Generous front to back adjustment
- Versatile rackmounting of LCD screen from 15" to 19", including some 20" monitors
- Includes both VESA 75 and VESA 100 mounting patterns
- RM-LCD-MT can mount larger monitors, up to 32" depending on weight
- Two styles:
 - Enclosed backpan – fixed, pivot/tilt, articulating
 - Open panel – fixed, pivot/tilt, best choice for 16:9 monitors

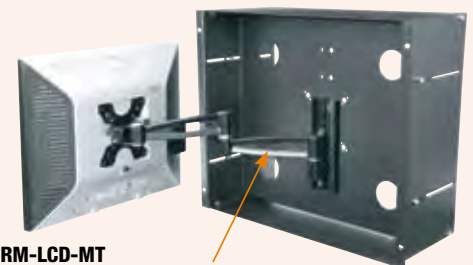
Part #	Racking Height	Description	Weight Capacity
RM-LCD-MV	15-3/4" (9 rackspace)	LCD rackmount, backpan style, VESA mount	35 lbs.
RM-LCD-MK	15-3/4" (9 rackspace)	LCD rackmount, backpan style, tilt mechanism	35 lbs.
RM-LCD-MT	15-3/4" (9 rackspace)	LCD rackmount, articulation	35 lbs.
RM-LCD-PNLV	5-1/4" (3 rackspace)	LCD rackmount, open panel style, VESA mount	27 lbs.
RM-LCD-PNLK	5-1/4" (3 rackspace)	LCD rackmount, open panel style, tilt mechanism	27 lbs.



RM-LCD-PNLV
fixed open panel style



RM-LCD-PNLK
tilt open panel style

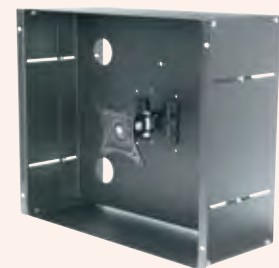


RM-LCD-MT
articulating enclosed backpan style
(monitor not included)

EIA/TIA Compliant
 Spec. # 96-01120 for full product info.



RM-LCD-MV
fixed enclosed backpan style



RM-LCD-MK
tilt enclosed backpan style