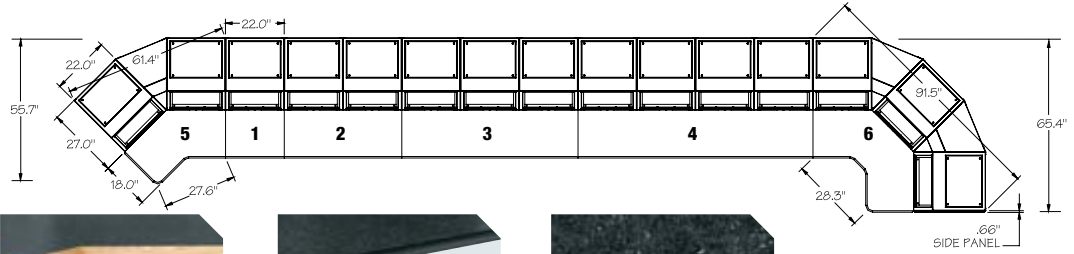


# MONITORING CONSOLE WORK SURFACES & ORDERING GUIDE

## Monitoring Console Work Surfaces

Console work surfaces are available with a beveled oak bullnose edge trim or an attractive economical black T-mold edge trim. All work surfaces are 1" thick and 18" deep, feature a durable graphite laminate top and include all necessary mounting hardware to simplify ordering. Included work surface support brackets do not impede any useable rackspace, maximizing the usability of each console bay. Additional laminate colors available, please call for details.

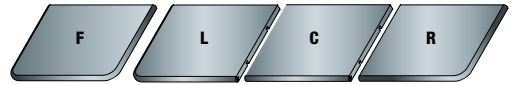
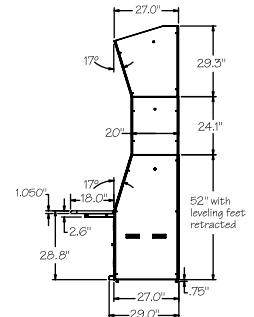


Position	Description	Beveled Oak Trim Part #	Black T-Mold Trim Part #
1	single bay	WS1-S18-GO <sup>≠</sup>	WS1-S18-GB <sup>≠</sup>
2	two bay straight	WS2-S18-GO <sup>≠</sup>	WS2-S18-GB <sup>≠</sup>
3	three bay straight	WS3-S18-GO <sup>≠</sup>	WS3-S18-GB <sup>≠</sup>
4	four bay straight	WS4-S18-GO <sup>≠</sup>	WS4-S18-GB <sup>≠</sup>
5	2 bay 45° corner	WS245-S18-GO <sup>≠</sup>	WS245-S18-GB <sup>≠</sup>
6	3 bay 90° corner	WS390-S18-GO <sup>≠</sup>	WS390-S18-GB <sup>≠</sup>

<sup>≠</sup> Suffix part # with desired finish/position (F, L, C, R), see below.

<b>F</b>	finished all sides
<b>L</b>	finished edge left (right side unfinished)
<b>C</b>	center (left and right side unfinished)
<b>R</b>	finished edge right (left side unfinished)

Please specify the finish and position of work surfaces - or contact our Console Support Group and let us do it for you!



### Finish/Position

Please specify the finish and position of work surfaces - or contact customer service and let us do it for you!

## Convenient Console Ordering Guide

### How to Determine Your Console Configuration

There are a number of factors to consider when deciding how many base console bays to order. Systems with single operators and multiple monitors can utilize base consoles with the addition of top monitor racks to achieve enhanced ergonomics and space efficiency, whereas multiple user systems with minimal monitoring requirements will benefit by utilizing a greater number of base consoles and may not require top monitor racks. When room dimensions are the prime constraint, please refer to the dimensioned drawing above, download specifications from our website, or request a drawing from our Console Support Group to determine if the system required will fit in the room.

### Does the System Require Active or Passive Thermal Management?

All electronic equipment produces heat. Many systems utilizing analog or fewer digital components will function very well utilizing convective cooling techniques. Choose our Convective Series™ consoles, which are designed to optimize natural convection, to help keep equipment cool in these systems.

Systems utilizing mostly digital equipment or with high heat density will benefit from our Quiet-Cool Series™ consoles, which are designed with Active thermal management, and include the added benefit of isolating the operator from noise generated by equipment. Please contact us if you have questions regarding thermal management techniques.

			Quiet-Cool Series™ "Active"	Convective Series™ "Passive"
1.	Determine # of bays		SCQ-1427-1217BK (17° slope) SCQ-1427-1460BK (60° slope)	SC-1427-1217BK (17° slope) SC-1427-1460BK (60° slope)
2.	Select top monitor racks if required (available for 17° slope only)	Sloped or	SCQ3T-1427-1217-1217BK	SC3T-1427-1217-1217BK
		Straight	SCQ3T-1427-1217-12BK	SC3T-1427-1217-12BK
3.	Select wedges if required	Console Bay	SCW45-1427-1217BK (17° slope) SCW45-1427-1460BK (60° slope)	SCW45-1427-1217BK (17° slope) SCW45-1427-1460BK (60° slope)
		Sloped Top Monitor Rack (available for 17° slope only)	SCW3T45-1427-1217-1217BK (for base consoles with a 17° slope)	SCW3T45-1427-1217-1217BK (for base consoles with a 17° slope)
		Straight Top Monitor Rack (available for 17° slope only)	SCW3T45-1427-1217-12BK (for base consoles with a 17° slope)	SCW3T45-1427-1217-12BK (for base consoles with a 17° slope)
4.	Add side panels	Console Bay	SPNQ-1427-1217BK (17° slope) SPNQ-1427-1460BK (60° slope)	SPN-1427-1217BK (17° slope) SPN-1427-1460BK (60° slope)
		Sloped top monitor rack	SPNQ3T-1427-1217-1217BK	SPN3T-1427-1217-1217BK
		Straight top monitor rack	SPNQ3T-1427-1217-12BK	SPN3T-1427-1217-12BK
5.	Select work surface	with Beveled Oak Trim	see above	see above
		with Black T-Mold Trim	see above	see above

For more detail, please visit [www.middleatlantic.com/sec/orderGuide.htm](http://www.middleatlantic.com/sec/orderGuide.htm)