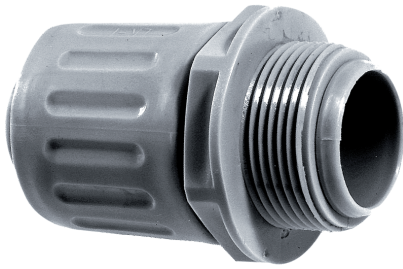


SILVYN® LKI/LKI-M

Conduit Connectors for SILVYN® FD-PU & SILVYN® FPS Conduit



SILVYN® LKI is a swivel connector designed to allow the conduit to rotate freely without damage to the conduit or the connection. It is tension and vibration resistant, providing a high quality connection between the protective conduit and the machine. SILVYN® LKI is for use with SILVYN® FPS and FD-PU conduits.

■ Approvals

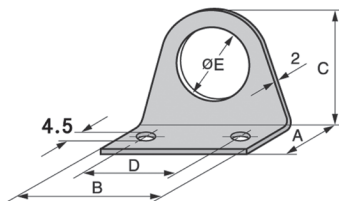


■ Technical Data

Material:	Polypropylene	Color:	Gray
Locknuts:	SKINTOP® GMP-GL, page 544	Protection:	IP54
Temperature Range:	-10°C to +110°C		

Part Number	Thread Size	Conduit Outer Diameter		Thread Length		SILVYN® FPS Conduit	SILVYN® FD-PU Conduit	Standard Pack Size
		(inches)	(mm)	(inches)	(mm)			
SILVYN® LKI: PG Threads								
55000000	PG 7	0.394	10.0	0.394	10.0	61711550	64453662	50
55000010	PG 9	0.551	14.0	0.394	10.0	61711590	64453672	50
55000020	PG 11	0.669	17.0	0.394	10.0	61711630	64453682	50
55000030	PG 13	0.748	19.0	0.394	10.0	61711670	64453692	50
55000040	PG 16	0.827	21.0	0.433	11.0	61711710	64453702	50
55000050	PG 21	1.063	27.0	0.433	11.0	61711750	64453712	25
55000060	PG 29	1.417	36.0	0.472	12.0	61711790	64453721	25
55000070	PG 36	1.772	45.0	0.472	12.0	61711830	64453731	25
55000090	PG 48	2.205	56.0	0.591	15.0	61711910	64453751	10
SILVYN® LKI-M: Metric Threads								
55501400	M12 x 1.5	0.394	10.0	0.394	10.0	61711550	64453612	50
55501410	M16 x 1.5	0.551	14.0	0.394	10.0	61711590	64453672	50
55501420	M20 x 1.5	0.669	17.0	0.394	10.0	61711630	64453682	50
55501430	M25 x 1.5	0.827	21.0	0.433	11.0	61711710	64453702	50
55501440	M32 x 1.5	1.063	27.0	0.472	12.0	61711750	64453712	25
55501450	M40 x 1.5	1.417	36.0	0.472	12.0	61711790	64453721	25
55010460	M50 x 1.5	1.772	45.0	0.472	12.0	61711830	64453731	25
55501470	M63 x 1.5	2.205	56.0	0.591	15.0	61711910	64453751	10

SILVYN® BW



All dimensions are in mm.

SILVYN® BW is a special mounting bracket to be used with a SILVYN® LKI connector to provide the proper sealing protection.

■ Technical Data

Material:	Passivated stainless steel
------------------	----------------------------

Part Number	Thread Size	A		B		C		D		øE		Standard Pack Size
		(inches)	(mm)	(inches)	(mm)	(inches)	(mm)	(inches)	(mm)	(inches)	(mm)	
SILVYN® BW: PG Brackets												
55000540	PG 16	0.79	20.0	1.97	50.0	1.50	38.0	1.58	40.0	0.91	23.0	25
55000550	PG 21	0.79	20.0	2.36	60.0	1.85	47.0	1.97	50.0	1.14	29.0	25
55000560	PG 29	0.79	20.0	2.76	70.0	2.24	57.0	2.36	60.0	1.48	37.5	25
55000570	PG 36	0.79	20.0	3.15	80.0	2.64	67.0	2.76	70.0	1.87	47.5	25

Photographs are not to scale and are not true representations of the products in question.

For current information go to our website. If not otherwise specified, all values relating to the product are nominal values.