

## PG/NPT Adapters



■ Approvals



Part Number	Thread Type & Size Male to Female	Standard Pack Size
<b>PG to NPT Adapters</b>		
01112	PG 11 → NPT 1/2"	10
01312	PG 13 → NPT 1/2"	10
01612	PG 16 → NPT 1/2"	10
02112	PG 21 → NPT 1/2"	10
02134	PG 21 → NPT 3/4"	10
02910	PG 29 → NPT 1"	10
03614	PG 36 → NPT 1 1/4"	10

## NPT/PG Adapters



■ Approvals



Part Number	Thread Type & Size Male to Female	Standard Pack Size
<b>NPT to PG Adapters</b>		
11211	NPT 1/2" → PG 11	10
11213	NPT 1/2" → PG 13	10
11216	NPT 1/2" → PG 16	10
13411	NPT 3/4" → PG 11	10
13413	NPT 3/4" → PG 13	10
13416	NPT 3/4" → PG 16	10
13421	NPT 3/4" → PG 21	10
11116	NPT 1" → PG 16	10

## SKINDICHT® MA-M/NPT Adapters



■ Approvals



Part Number	Thread Type & Size Male to Female	Standard Pack Size
<b>Metric to NPT Adapters</b>		
54020100	M16 x 1.5 → NPT 1/2"	50
54020110	M20 x 1.5 → NPT 1/2"	50
54020120	M25 x 1.5 → NPT 1/2"	25
54020130	M25 x 1.5 → NPT 3/4"	25
54020140	M32 x 1.5 → NPT 1/2"	25
54020152	M32 x 1.5 → NPT 1"	25
54020153	M40 x 1.5 → NPT 1 1/4"	10

## SKINDICHT® MA-M/PG Adapters



■ Approvals



Part Number	Thread Type & Size Male to Female	Standard Pack Size
<b>Metric to PG Adapters</b>		
52104200	M16 x 1.5 → PG 7	100
52104210	M20 x 1.5 → PG 9	50
52104220	M25 x 1.5 → PG 11	50
52104230	M25 x 1.5 → PG 13	50
52104240	M25 x 1.5 → PG 16	50
52104250	M32 x 1.5 → PG 16	25
52104260	M32 x 1.5 → PG 21	25
52104270	M40 x 1.5 → PG 21	25
52104280	M50 x 1.5 → PG 29	10
52104290	M63 x 1.5 → PG 36	10
52104300	M63 x 1.5 → PG 42	10

## SKINDICHT® ZS-M/PG Adapters



■ Approvals



Part Number	Thread Type & Size Male to Female	Width Across Flats (inches)	Thread Length (inches)	Standard Pack Size
<b>Metric to PG Adapters</b>				
52104330	M12 x 1.5 → PG 7	0.55	0.20	100
52104340	M16 x 1.5 → PG 9	0.71	0.20	100
52104010	M16 x 1.5 → PG 11	0.79	0.20	100
52104360	M20 x 1.5 → PG 11	0.87	0.24	100
52104370	M20 x 1.5 → PG 13	0.87	0.24	100
52104380	M20 x 1.5 → PG 16	0.94	0.24	50
52104400	M25 x 1.5 → PG 21	1.18	0.28	50
52104410	M32 x 1.5 → PG 29	1.57	0.31	25
52104420	M40 x 1.5 → PG 36	1.97	0.31	10
52104430	M50 x 1.5 → PG 42	2.24	0.35	10
52104440	M63 x 1.5 → PG 48	2.60	0.39	10

Photographs are not to scale and are not true representations of the products in question.

For current information go to our website. If not otherwise specified, all values relating to the product are nominal values.

## SKINDICHT® MA-PG/M Adapters

## Approvals



## Technical Data



Material:

- Body: Nickel-plated brass

Shape A



Shape B



Part Number	Thread Type & Size Male to Female	Standard Pack Size	Part Number	Thread Type & Size Male to Female	Standard Pack Size
PG to Metric Adapters: Shape A			PG to Metric Adapters: Shape B		
52104492	PG 11 → M16 x 1.5	50	52104490	PG 7 → M12 x 1.5	100
52104495	PG 16 → M20 x 1.5	50	52104491	PG 9 → M16 x 1.5	50
52104497	PG 21 → M20 x 1.5	50	52104493	PG 11 → M20 x 1.5	50
52104498	PG 21 → M25 x 1.5	50	52104494	PG 13 → M20 x 1.5	50
52104500	PG 29 → M25 x 1.5	25	52104496	PG 16 → M25 x 1.5	50
52104501	PG 29 → M32 x 1.5	25	52104499	PG 21 → M32 x 1.5	50
52104503	PG 36 → M40 x 1.5	10	52104502	PG 29 → M40 x 1.5	10

## SKINDICHT® A-PG/M Adapters

## Approvals



## Technical Data



Material:

Glass fiber reinforced polyamide



Temperature Range:

-40°C to +100°C



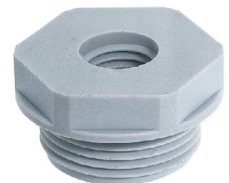
Color:

Light gray (RAL 7035)

Shape A



Shape B



Part Number Shape A	Part Number Shape B	Thread Type & Size Male to Female	Standard Pack Size	Part Number Shape A	Part Number Shape B	Thread Type & Size Male to Female	Standard Pack Size
PG to Metric Adapters							
52100320	—	PG 7 → M12 x 1.5	25	52100334	—	PG 21 → M25 x 1.5	10
52100321	—	PG 7 → M16 x 1.5	25	52100335	—	PG 21 → M32 x 1.5	10
52100322	—	PG 9 → M12 x 1.5	25	52100336	—	PG 21 → M40 x 1.5	10
52100323	—	PG 9 → M16 x 1.5	25	—	52100337	PG 29 → M32 x 1.5	10
52100324	—	PG 9 → M20 x 1.5	25	52100338	—	PG 29 → M40 x 1.5	10
52100325	—	PG 11 → M16 x 1.5	25	52100339	—	PG 29 → M50 x 1.5	10
52100326	—	PG 11 → M20 x 1.5	25	—	52100340	PG 36 → M40 x 1.5	10
52100327	—	PG 11 → M25 x 1.5	25	52100341	—	PG 36 → M50 x 1.5	10
52100328	—	PG 13 → M16 x 1.5	25	52100342	—	PG 36 → M63 x 1.5	10
52100329	—	PG 13 → M20 x 1.5	25	—	52100343	PG 42 → M40 x 1.5	5
52100330	—	PG 13 → M25 x 1.5	25	52100344	—	PG 42 → M50 x 1.5	5
52100331	—	PG 16 → M20 x 1.5	25	52100345	—	PG 42 → M63 x 1.5	5
52100332	—	PG 16 → M25 x 1.5	25	—	52100346	PG 48 → M50 x 1.5	5
52100333	—	PG 16 → M32 x 1.5	25	52100347	—	PG 48 → M63 x 1.5	5

Photographs are not to scale and are not true representations of the products in question.

For current information go to our website. If not otherwise specified, all values relating to the product are nominal values.