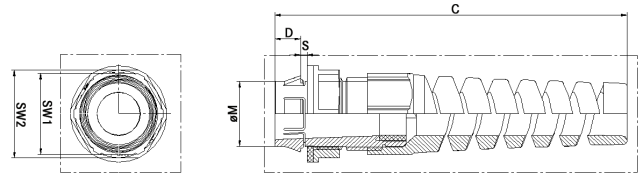


SKINTOP® CLICK FLEX

Spiral Strain Relief with Quick "CLICK" Insertion System



SKINTOP® CLICK FLEX is an innovative cable insertion system that provides fast, highly flexible assembly. Easy snap-in-place installation results in fixed, centered, strain relief with maximum protection in seconds. Liquid-tight spiral strain relief offers additional safety against overstress and conductor breakage for applications such as hand-held equipment, moving machinery, and robotics. Mounting hole is based on metric thread.

Application Advantage

- Up to 70% installation time savings due to innovative CLICK system
- Ideal for hard-to-reach dual wall enclosures and limited access spaces
- Reduced inventory as no locknuts are required
- The heavy duty SKINTOP® design provides great pullout strength and very reliable strain relief
- Superior integrated locking mechanism includes an internal ratchet for vibration-proof protection

Approvals



Accessories



1 disassembly tool per pack included

Similar Products

- SKINTOP® FLEX

Technical Data

Material: - Body: Special polyamide - Seal: Special elastomer	Color: Black (RAL 9005), UV resistant Gray (RAL 7001)
Temperature Range: -20°C to +100°C	

Part Number	Mounting Hole Size	UL Status	øF Clamping Range		SW Wrenching Flats		C Overall Length (inches)	D Thread Length (inches)	øM Hole (inches)	Standard Pack Size
			(inches)	(mm)	SW1	SW2				
53112936	M12	Recognized	0.138 - 0.276	3.5 - 7.0	0.591	0.709	2.915	0.315	0.484 (-.008)	50
53112909	M16	Recognized	0.197 - 0.354	5.0 - 9.0	0.748	0.866	3.703	0.315	0.642 (-.008)	50
53112911	M20	Listed	0.276 - 0.512	7.0 - 13.0	0.985	1.063	4.255	0.315	0.799 (-.008)	25
53112912	M25	Listed	0.354 - 0.669	9.0 - 17.0	1.182	1.339	5.003	0.315	0.996 (-.008)	25
53112937	M32	Listed	0.433 - 0.827	11.0 - 21.0	1.418	1.576	6.107	0.315	1.272 (-.008)	25

Photographs are not to scale and are not true representations of the products in question. For current information go to our website. If not otherwise specified, all values relating to the product are nominal values.