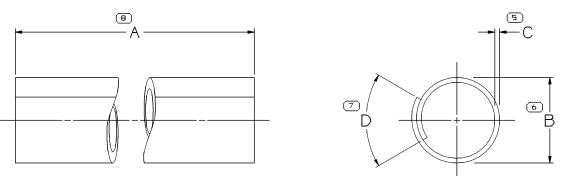
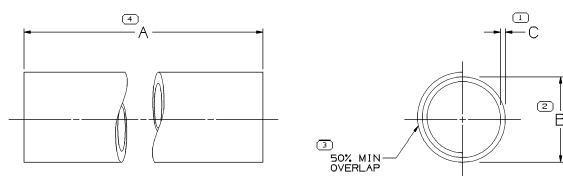


SYMBOL DEFINITION
 A DIMENSION WITHOUT AN INSPECTION REPORT SYMBOL () DOES NOT REQUIRE INSPECTION. IT MAY BE CONTROLLED ON THE INDIVIDUAL COMPONENT DRAWINGS.

TOTAL NO OF INSPECTIONS REQUIRED
 INSPECTION REPORT NO. USED

MISSING SYMBOLS
 NO MISSING SYMBOL NUMBER

DATE	REV	NO	DATE	REV	NO	DATE	REV	NO	DATE	REV	NO
09JUL02	R	01	-	-	-	-	-	-	-	-	-
07DEC02	R	03	-	-	-	-	-	-	-	-	-
08DEC02	R	04	-	-	-	-	-	-	-	-	-
22DEC02	R	05	-	-	-	-	-	-	-	-	-



M5578001, M5578002, M5578007

M5578003, M5578004, M5578006, M5578008

NOTES

- UNLESS OTHERWISE SPECIFIED AND/OR INDICATED:
 DIMENSIONS ARE TO FACE OF VIEW SHOWN AND AUTOMATICALLY ROUNDED BY COMPUTER FOR INSPECTION (SEE MATH MODEL FOR PRECISE DIMENSIONS) FOR ALL OTHER DIMENSIONS NOT SHOWN BUT REQUIRED FOR TOOL BUILD, SEE MATH MODEL FOR PRECISE TOOL PATH DATA.
- PARTS MAY BE 20% OUT OF ROUND.
- REFER TO MASTER BULK SPECIFICATION M5578 FOR APPLICABLE MATERIAL SPECIFICATIONS.
- TOLERANCES ARE:
 ONE PLACE DIMENSIONS - ± 0.3
 TWO PLACE DIMENSIONS ± 0.15
- LENGTH TOLERANCE (A) ARE ± 0.0 UNLESS LABELED OTHERWISE.

PART NO	REV	N/P	STATUS	A	B	C	D	MAT'L SPEC
13958820	01			135.0 - 125.0	9.40 - 6.86	0.77 - 0.51	7.11 - 5.59	M5578003
13950228	01			135.0 - 125.0	15.0 - 12.4	0.77 - 0.51	7.6 - 6.1	M5578006
13940506	01			35	15.0 - 12.4	0.77 - 0.51	7.6 - 6.1	M5578006
13929808	01			45.0 - 35.0	12.70 - 10.16	0.77 - 0.51	-----	M5578001
13676231	01	AB		405.0 - 425.0	26.24 - 23.73	1.31 - 1.05	-----	M5578007
13653474	01	AB		500.0 - 520.0	26.24 - 23.73	1.31 - 1.05	-----	M5578007
13699465	01			800	19.05-16.51	0.89-0.63	-----	M5578002
13681989	01	AA		405	12.70-10.16	0.77-0.51	-----	M5578001
13681988	01	AA		480	12.70-10.16	0.77-0.51	-----	M5578001
13681987	01	AA		460	12.70-10.16	0.77-0.51	-----	M5578001
13681986	01	AA		790	12.70-10.16	0.77-0.51	-----	M5578001
13692394	01	AA		560	26.27-23.73	0.89-0.63	-----	M5578002
13692395	01	AA		710	12.70-10.16	0.77-0.51	-----	M5578001
15489671	01	AB		188.0 - 168.0	9.40-6.86	0.77-0.51	-----	M5578003
08900800	01	AB		370	12.70-10.16	0.77-0.51	-----	M5578001
13683740	01	AA		175.0-155.0	26.27-23.73	1.31-1.05	-----	M5578007
13515779	01	AB		70.0-90.0	9.40-6.86	0.77-0.51	7.11-5.59	M5578003
15488211	01	AB		295.0-285.0	26.27-23.73	1.31-1.05	-----	M5578007
15488966	01	AB		365.0-355.0	12.70-10.16	0.77-0.51	-----	M5578001
15488965	01	AB		365.0-355.0	19.05-16.51	0.89-0.63	-----	M5578002
15488738	01	AB		350.0-340.0	12.70-10.16	0.77-0.51	-----	M5578001
15488021	01	AC		30.0-50.0	9.40-6.86	0.77-0.51	7.11-5.59	M5578003
15483021	01	AC		460.0-450.0	9.40-6.86	0.77-0.51	7.11-5.59	M5578003
15476947	01	AA		90.0-80.0	19.05-16.51	0.89-0.63	-----	M5578002
15453699	01	AC		50.0-70.0	26.27-23.73	1.31-1.05	-----	M5578007
15450871	01	AB		425.0-470.0	19.05-16.51	0.89-0.63	-----	M5578002
15449341	01	AB		190.0-210.0	26.27-23.73	1.31-1.05	-----	M5578007
15438390	01	AA		65.0-75.0	26.27-23.73	1.31-1.05	-----	M5578007
15417145	01	AB		540.0-510.0	9.40-6.86	0.77-0.51	7.11-5.59	M5578003
15373474	01	AC		35.0-50.0	9.40-6.86	0.77-0.51	7.11-5.59	M5578003
15317451	A2			350.0-330.0	9.40-6.86	0.77-0.51	7.11-5.59	M5578003
15317449	A2			290.0-270.0	19.05-16.51	0.89-0.63	-----	M5578002
15354770	A2			260.0-240.0	9.40-6.86	0.77-0.51	7.11-5.59	M5578003
15317448	A1			235.0-210.0	12.70-10.16	0.77-0.51	-----	M5578001
15317446	A1			60.0-61.5	9.40-6.86	0.77-0.51	7.11-5.59	M5578003
15336110	A2			275.0-265.0	9.40-6.86	0.77-0.51	7.11-5.59	M5578003
15318204	A1			160.0-140.0	26.27-23.73	1.31-1.05	-----	M5578007
15317443	A1			131.0-140.0	9.40-6.86	0.77-0.51	7.11-5.59	M5578003
15317797	A1			665.0-645.0	15.0-12.4	0.77-0.51	7.6-6.1	M5578006
15317778	A1			340.0-320.0	15.0-12.4	0.77-0.51	7.6-6.1	M5578006
15305386	A2			295.0-285.0	9.40-6.86	0.77-0.51	7.11-5.59	M5578003
12146687	A1			1220.0-1180.0	19.05-16.51	0.89-0.63	-----	M5578002
12146680	A1			185.0-165.0	9.40-6.86	0.77-0.51	7.11-5.59	M5578003
12146679	A1			1015.0-985.0	19.05-16.51	0.89-0.63	-----	M5578002
12146678	A1			485.0-455.0	12.70-10.16	0.77-0.51	-----	M5578001
12146677	A1			1465.0-1425.0	19.05-16.51	0.89-0.63	-----	M5578002
12146666	A1			140.0-120.0	26.27-23.73	1.31-1.05	-----	M5578007
12146672	B2			125.0-115.0	19.05-16.51	0.89-0.63	-----	M5578002
12146671	B2			210.0-200.0	19.05-16.51	0.89-0.63	-----	M5578002
12146670	B2			1465.0-1425.0	19.05-16.51	0.89-0.63	-----	M5578002
12146669	B2			485.0-465.0	19.05-16.51	0.89-0.63	-----	M5578002
12146668	B2			635.0-615.0	19.05-16.51	0.89-0.63	-----	M5578002
12146652	A2			130.0-110.0	9.40-6.86	0.77-0.51	7.11-5.59	M5578003
12146656	A2			395.0-565.0	9.40-6.86	0.77-0.51	7.11-5.59	M5578003
12146650	A2			235.0-215.0	9.40-6.86	0.77-0.51	7.11-5.59	M5578003
12146647	A1			150.0-130.0	15.0-12.4	0.77-0.51	7.6-6.1	M5578006
12146627	A1			70.0-60.0	12.70-10.16	0.77-0.51	-----	M5578001
12146626	A1			100.0-90.0	9.40-6.86	0.77-0.51	7.11-5.59	M5578003
12146625	A1			510.0-95.0	15.0-12.4	0.77-0.51	7.6-6.1	M5578006
12146616	A2			525.0-495.0	19.05-16.51	0.89-0.63	-----	M5578002
12146612	A2			55.0-45.0	19.05-16.51	0.89-0.63	-----	M5578002
12146604	A2			280.0-260.0	19.05-16.51	0.89-0.63	-----	M5578002
12110896	A2			160.0-140.0	19.05-16.51	0.89-0.63	-----	M5578002
12129913	A2			65.0-55.0	19.05-16.51	0.89-0.63	-----	M5578002
12129912	A2			45.0-35.0	19.05-16.51	0.89-0.63	-----	M5578002
12129911	A2			210.0-190.0	9.40-6.86	0.77-0.51	7.11-5.59	M5578003
12110995	A1			85.0-75.0	15.0-12.4	0.77-0.51	7.6-6.1	M5578006
12110994	A1			475.0-465.0	15.0-12.4	0.77-0.51	7.6-6.1	M5578006
12110983	A1			395.0-385.0	15.0-12.4	0.77-0.51	7.6-6.1	M5578006
12110982	A1			12.70-10.16	9.40-6.86	0.77-0.51	-----	M5578001
12110865	A1			125.0-115.0	12.70-10.16	0.77-0.51	-----	M5578001
12089053	A2			105.0-95.0	19.05-16.51	0.89-0.63	-----	M5578002
20077815	A			170.0-130.0	19.05-16.51	0.89-0.63	-----	R0067610
20069394	A			1975.0-1960.0	12.70-10.16	0.77-0.51	-----	M5578001
20065984	A1			155.0-135.0	12.70-10.16	0.77-0.51	-----	M5578001
20062344	A1			310.0-290.0	9.40-6.86	0.77-0.51	7.11-5.59	M5578003
20052243	A1			290.0-270.0	12.70-10.16	0.77-0.51	-----	M5578001
20052116	A1			175.0-155.0	12.70-10.16	0.77-0.51	-----	M5578001
20045524	A1			395.0-375.0	12.70-10.16	0.77-0.51	-----	M5578001
20045522	B2			1120.0-1080.0	9.40-6.86	0.77-0.51	7.11-5.59	M5578003
20045506	A2			1550.0-1505.0	9.40-6.86	0.77-0.51	7.11-5.59	M5578003
20043577	A2			110.0-90.0	12.70-10.16	0.77-0.51	-----	M5578001
20034557	B1			105.0-75.0	9.40-6.86	0.77-0.51	7.11-5.59	M5578003
20015043	A1			1156.0-1130.0	12.70-10.16	0.77-0.51	-----	M5578001
08911596	A1			648.0-622.0	9.40-6.86	0.77-0.51	7.11-5.59	M5578003
08909487	A1			321.0-495.0	19.05-16.51	0.89-0.63	-----	M5578002
08905471	A			ABSOLETE	2616.0-2565.0	12.70-10.16	0.77-0.51	R0067610
08905468	NONE			ABSOLETE	284.0-2794.0	12.70-10.16	0.77-0.51	R0067610
08905465	NONE			ABSOLETE	3150.0-3099.0	12.70-10.16	0.77-0.51	R0067610
08905462	NONE			ABSOLETE	4064.0-4013.0	12.70-10.16	0.77-0.51	R0067610
08905196	NONE			ABSOLETE	699.0-673.0	12.70-10.16	0.77-0.51	R0067610

PART NO	REV	N/P	STATUS	A	B	C	D	MAT'L SPEC
08905177	A		ABSOLETE	1670.0-1645.0	12.70-10.16	0.77-0.51	-----	R0067610
08905176	NONE		ABSOLETE	1499.0-1473.0	12.70-10.16	0.77-0.51	-----	R0067610
08905175	NONE		ABSOLETE	1588.0-1562.0	12.70-10.16	0.77-0.51	-----	R0067610
08905174	NONE		ABSOLETE	1575.0-1549.0	12.70-10.16	0.77-0.51	-----	R0067610
08905173	NONE		ABSOLETE	1435.0-1410.0	12.70-10.16	0.77-0.51	-----	R0067610
08905172	NONE		ABSOLETE	1340.0-1314.0	12.70-10.16	0.77-0.51	-----	R0067610
08905171	NONE		ABSOLETE	1308.0-1283.0	12.70-10.16	0.77-0.51	-----	R0067610
08905081	NONE		ABSOLETE	152.0-127.0	9.40-6.86	0.77-0.51	7.11-5.59	R0067612
08905025	NONE		ABSOLETE	191.0-165.0	12.7			