



# WMRK Series Server Enclosures



EIA/TIA Compliant



Spec. # 96-01079 for full product info.



## WMRK = Wide Multi-Bay

The WMRK was designed specifically for mounting deep equipment in a raised-floor standard 24" wide enclosure. Comes standard with cage nut mounting rails.

Choose a WMRK when mounting deep servers or similar equipment is required, and for easy installations in raised-floor environments. Configured models are also available – see pg. 49 for details.



### Structural Features

- Fully welded construction for strength and stability
- 24" overall width optimized for use on raised floors
- Numbered rackspace increments speed equipment mounting
- Designed to allow fully integrated racks to be ganged
- Includes two pair of adjustable cage nut rackrail and one pair of z-rail sidemount adaptors configured to accept servers and slide kits from all leading manufacturers
- Includes leveling feet and 100 qty of 6mm cage nuts and hardware
- Finished in a durable black textured powder coat

### Thermal Management

- Includes perforated front and rear doors to meet most server manufacturer warranty specifications (for configured versions only)

### Cable Management

- 42 space model includes a pre-mounted vertical lacing strip

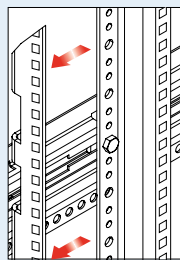
### Regulatory / Certifications

- Static load capacity - 10,000 lbs.
- UL Listed in the US and Canada. UL Listed load capacity - 2,500 lbs.
- Seismic certified to the following codes and standards: 2007 & 2010 CBC; 2006, 2009 & 2012 IBC; ASCE 7-05 (2005 Edition) & ASCE 7-10 (2010 Edition) and the 2006 & 2009 editions of NFPA 5000 for use in areas of high seismicity – Zone 4 or Seismic Design Category (SDC) "D". These are designed for Mission Critical and/or High-Importance Installations in locations with the highest level of seismicity and top floor or rooftop installations including those within UBC and CBC Essential facilities or IBC, ASCE 7, and NFPA 5000 Seismic Use Group III facilities. For all codes, the Importance factor (I<sub>p</sub>) is 1.5. Seismic Certified load capacity of 1,090 lbs. when used with WMRK-Z4 seismic floor anchor brackets.
- GREENGUARD Indoor Air Quality Certified for Children and Schools (the most strict level)

WMRK Series Server Enclosures

**WMRK-4236**  
shown with optional front/rear doors

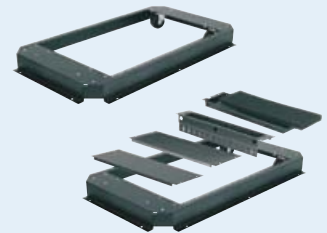
**PROWMRK-ZRA-xx**  
Z-rail adaptor converts standard rackrail to "Z" rail, for side mount applications



### Caster and Plenum Bases

Optional caster base allows the rack to be wheeled into place, then raised via leveling feet. Caster base includes one 4 space and one 2 space blank panel. Optional Plenum Base accepts a variety of 19" panels for cable and thermal management including filters, brush grommets, vent panels, & blank panels.

- 36" deep = 10 rackspace
- 42" deep = 14 rackspace
- 48" deep = 18 rackspace



Part #	Racking Height	Overall Height	Useable Depth	Overall Depth	Overall Width	Lockable Side Panels	UL LISTED Caster Base	Plenum Base	Add'l Cage Nut Rackrail	Add'l Z-rail Adaptor	Recommended Power*
WMRK-2436	42" (24 space)	48-5/16"	33-1/2"	36"	24"	SPN-24-36	CBS-WMRK-36	PBS-WMRK-36	PROWMRK-RR24	PROWMRK-ZRA-24	E G
WMRK-2442	42" (24 space)	48-5/16"	39-1/2"	42"	24"	SPN-24-42	CBS-WMRK-42	PBS-WMRK-42	PROWMRK-RR24	PROWMRK-ZRA-24	E G
WMRK-4236	73-1/2" (42 space)	79-13/16"	33-1/2"	36"	24"	SPN-42-36	CBS-WMRK-36	PBS-WMRK-36	PROWMRK-RR42	PROWMRK-ZRA-42	E G N P R T
WMRK-4242	73-1/2" (42 space)	79-13/16"	39-1/2"	42"	24"	SPN-42-42	CBS-WMRK-42	PBS-WMRK-42	PROWMRK-RR42	PROWMRK-ZRA-42	E G N P R T
WMRK-4248	73-1/2" (42 space)	79-13/16"	45-1/2"	48"	24"	SPN-42-48	CBS-WMRK-48	PBS-WMRK-48	PROWMRK-RR42	PROWMRK-ZRA-42	E G N P R T
WMRK-4536	78-3/4" (45 space)	85-1/16"	33-1/2"	36"	24"	SPN-45-36	CBS-WMRK-36	PBS-WMRK-36	PROWMRK-RR45	PROWMRK-ZRA-45	E G N P R T
WMRK-4542	78-3/4" (45 space)	85-1/16"	39-1/2"	42"	24"	SPN-45-42	CBS-WMRK-42	PBS-WMRK-42	PROWMRK-RR45	PROWMRK-ZRA-45	E G N P R T
WMRK-4548	78-3/4" (45 space)	85-1/16"	45-1/2"	48"	24"	SPN-45-48	CBS-WMRK-48	PBS-WMRK-48	PROWMRK-RR45	PROWMRK-ZRA-45	E G N P R T

\*for more info refer to pgs. 96-117

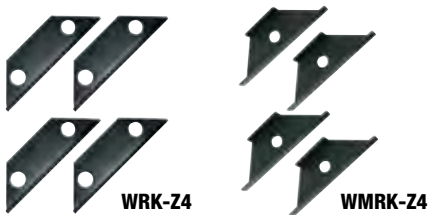


# Enclosure Options

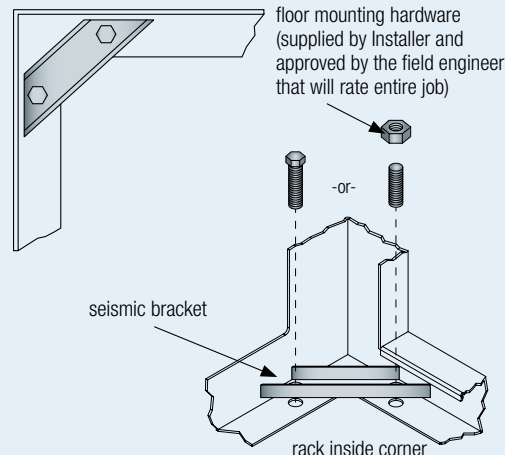
## Seismic Floor Anchor Brackets

When properly installed, seismic floor anchor brackets bring any Seismic Certified DRK, WRK, MRK, VMRK, VRK, ERK, SC, SCQ, SCRK, SCQRK and WMRK Series enclosure to applicable Zone 4, Seismic Design Category (SDC) "D" and Seismic Use Group III Upper Floor Essential Equipment rating and have an  $I_p$  rating of 1.5. Includes four brackets.

Part #	Fits
WRK-Z4	WRK Series
MRK-Z4	MRK, DRK, VMRK Series
VRK-Z4	VRK Series
ERK-Z4	ERK Series
SC-Z4	SC, SCQ, SCRK, SCQRK Series
WMRK-Z4	WMRK Series



**BGR and EGR options are shown on rack series pgs.**

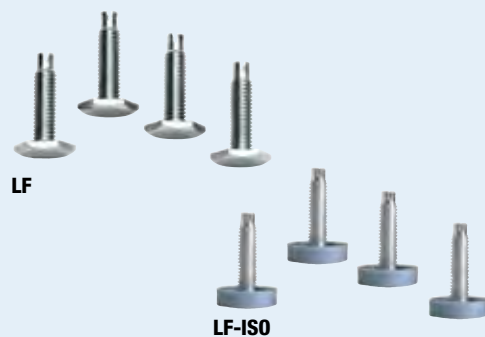


## Leveling Feet

Adjustable leveling feet fit Middle Atlantic Products floor standing steel racks and enclosures (excludes VRK Series). Isolation Leveling Feet feature protective rubber cover to isolate racks from the floor. Flat-blade and hex drive allows for adjustment. Also can be used in conjunction with recessed caster bases for MRK, WRK & DRK Series racks. Set of four. NOTE: Raises enclosure from 1/8" to 1" off floor.

Part #	Description
LF	leveling feet
LF-ISO	isolation leveling feet
LF-WMRK	WMRK isolation leveling feet

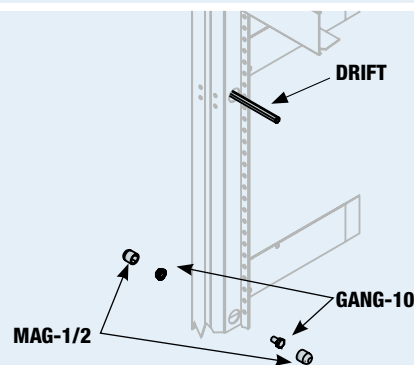
**BGR and EGR options are shown on rack series pgs.**



## Ganging Hardware

Time-saving ganging hardware provides easy field alignment and joining of multi-bay enclosures. Available hardware includes drift pins, 1/2" magnetized sockets and enough 5/16" flange nuts and bolts to gang up to 10 racks or consoles.

Part #	Description
DRIFT	set of two tapered drift pins
MAG-1/2	set of two 1/2" magnetic sockets
GANG-10	5/16" nuts/bolts to gang 10 racks or consoles
GANG-10T	5/16" bolts for ganging BGR via threaded inserts



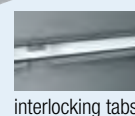
## Side Panels

The new sides (37 spaces and above) are horizontally split with an easier to manage interlocking design. Same user-installed keylock option for additional security if desired – as is the standard on all our universal side panels. NOTE: Each side panel adds 5/8" to width of rack.

Part #	Description	Fits	Part #	Description	Fits
SPN-24-267	2 full-height panels	fits racks 24 space & 26" or 27" deep	SPN-42-48	4 half-height panels	fits racks 42 space & 48" deep
SPN-24-312	2 full-height panels	fits racks 24 space & 31" or 32" deep	SPN-44-267	4 half-height panels	fits racks 44 space & 26" or 27" deep
SPN-24-36	2 full-height panels	fits racks 24 space & 36" deep	SPN-44-312	4 half-height panels	fits racks 44 space & 31" or 32" deep
SPN-37-267	4 half-height panels	fits racks 37 space & 26" or 27" deep	SPN-44-36	4 half-height panels	fits racks 44 space & 36" deep
SPN-37-312	4 half-height panels	fits racks 37 space & 31" or 32" deep	SPN-44-423	4 half-height panels	fits racks 44 space & 42" or 43" deep
SPN-40-267	4 half-height panels	fits racks 40 space & 26" or 27" deep	SPN-45-36	4 half-height panels	fits racks 45 space & 36" deep
SPN-40-312	4 half-height panels	fits racks 40 space & 31" or 32" deep	SPN-45-42	4 half-height panels	fits racks 45 space & 42" deep
SPN-42-36	4 half-height panels	fits racks 42 space & 36" deep	SPN-45-48	4 half-height panels	fits racks 45 space & 48" deep
SPN-42-42	4 half-height panels	fits racks 42 space & 42" deep	SPN-54-312	4 half-height panels	fits racks 54 space & 31" deep



2 piece side panels (lock in top panel is not shown)



interlocking tabs