



PS CONNECTOR

Connectors for tabs

- Secure locking, easy insertion
- Stable contact performance
- Mis-insertion prevention mechanism and housing lance

Standards

Recognized E60389

Certified LR20812

R9850196

Specifications

- Current rating: 25A AC, DC(#250/AWG #10)
- Voltage rating: 250V AC, DC
- Temperature range: -40°C to +105°C
(including temperature rise in applying electrical current)
- Contact resistance: Initial value/ 3m Ω max.
After environmental testing/ 6m Ω max.
- Insulation resistance: 1,000M Ω min.
- Withstanding voltage: 2,000V AC/ minute
- Applicable wire: #110...AWG #24 to #16
#187...AWG #26 to #14
#205...AWG #22 to #14
#250...AWG #22 to #10
- Applicable Tab: #110 Tab 0.5mm thick
#187 Tab 0.5mm/0.8mm thick
#205 Tab 0.5mm/0.8mm thick
#250 Tab 0.8mm thick

* Compliant with RoHS.

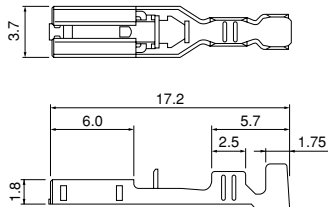
* Refer to "General Instruction and Notice when using Terminals and Connectors" at the end of this catalog.

* Contact JST for details.

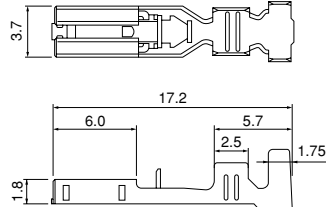
Contact

#110 Series

SPS-01T-110



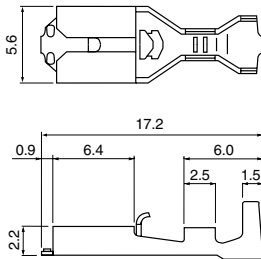
SPS-41T-110



#187 Series

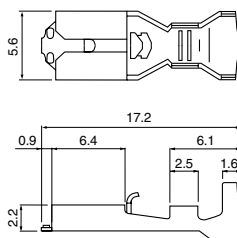
SPS-01T-187

(for 0.5mm thick tabs)



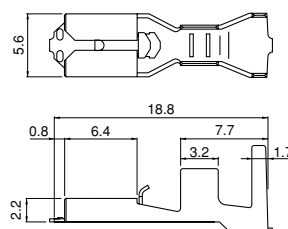
SPS-51T-187

(for 0.5mm thick tabs)



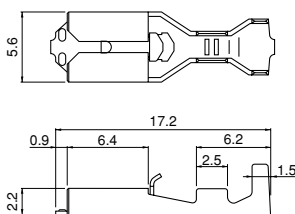
SPS-82T-187

(for 0.5mm thick tabs)



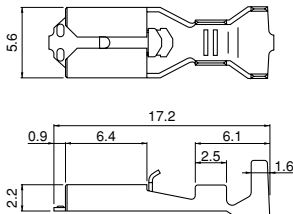
SPS-01T-187-8

(for 0.8mm thick tabs)



SPS-51T-187-8

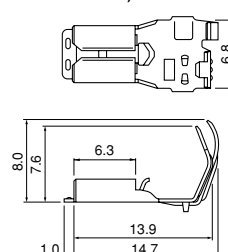
(for 0.8mm thick tabs)



<Flag type>

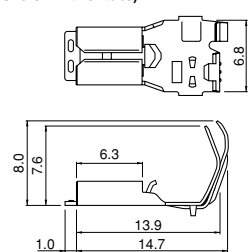
SFPS-41T-187

(for 0.5mm thick tabs)



SFPS-41T-187-8

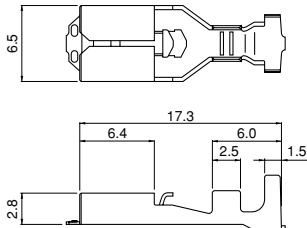
(for 0.8mm thick tabs)



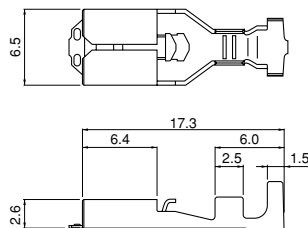
Contact

#205 Series

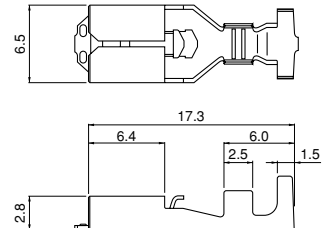
SPS-21T-205
(for 0.8mm thick tabs)



SPS-21T-205-5
(for 0.5mm thick tabs)

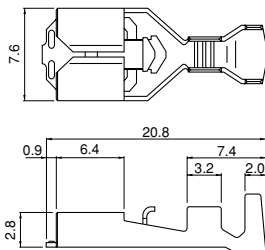


SPS-51T-205
(for 0.8mm thick tabs)

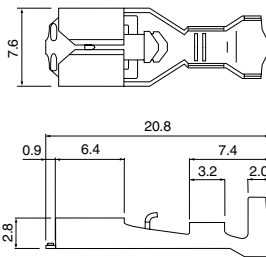


#250 Series

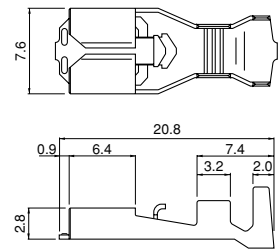
SPS-21T-250



SPS-61T-250

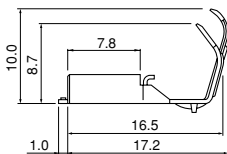
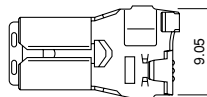


SPS-91T-250

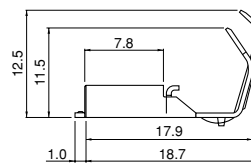
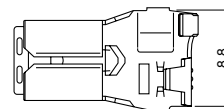


<Flag type>

SFPS-61T-250

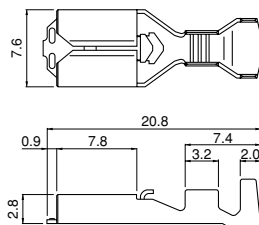


SFPS-91T-250

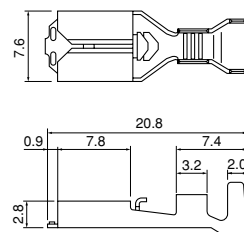


#250S Series

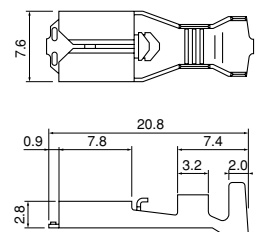
SPS-21T-250S



SPS-61T-250S



SPS-91T-250S



PS CONNECTOR

Contact

Series	Model No.	Applicable wire		Insulation O.D.(mm)	Q'ty / reel	
		mm ²	AWG #			
#110	SPS-01T-110	0.21 ~ 0.5	24~20	1.0~2.5	10,000	
	SPS-41T-110	0.5 ~ 1.31	20~16	1.9~3.4	10,000	
#187	for 0.5mm thick tabs	SPS-01T-187	0.13~ 0.5	26~20	1.3~3.4	10,000
		SPS-51T-187	0.5 ~ 2.0	20~14	1.9~3.6	7,500
		SPS-82T-187	0.75+0.75~1.25+1.25	18+18~16+16	2.1+2.1~2.9+2.9	3,500
	for 0.8mm thick tabs	SPS-01T-187-8	0.13~ 0.5	26~20	1.3~3.4	10,000
		SPS-51T-187-8	0.5 ~ 2.0	20~14	1.9~3.6	7,500
		SFPS-41T-187	0.3 ~ 1.25	22~16	1.7~3.4	5,000
#187 flag	for 0.5mm thick tabs	SFPS-41T-187	0.3 ~ 1.25	22~16	1.7~3.4	5,000
	for 0.8mm thick tabs	SFPS-41T-187-8	0.3 ~ 1.31	22~16	1.7~3.4	5,000
#205	for 0.8mm thick tabs	SPS-21T-205	0.3 ~ 0.75	22~18	1.5~3.1	5,000
	for 0.5mm thick tabs	SPS-21T-205-5	0.3 ~ 0.75	22~18	1.5~3.1	5,000
	for 0.8mm thick tabs	SPS-51T-205	0.5 ~ 2.0	20~14	1.9~3.6	5,000
#250	SPS-21T-250	0.3 ~ 0.75	22~18	1.5~3.1	5,000	
	SPS-61T-250	0.75~ 2.0	18~14	2.1~3.9	5,000	
	SPS-91T-250	2.0 ~ 5.5	14~10	3.0~4.7	4,000	
#250 flag	SFPS-61T-250	0.75~ 2.0	18~14	2.1~3.9	3,000	
	SFPS-91T-250	3.5 ~ 5.5	12~10	4.0~5.2	2,000	
#250S	SPS-21T-250S	0.3 ~ 0.75	22~18	1.5~3.1	5,000	
	SPS-61T-250S	0.75~ 2.0	18~14	2.1~3.9	5,000	
	SPS-91T-250S	2.0 ~ 5.5	14~10	3.0~4.7	4,000	

Material and Finish

Brass, tin-plated (reflow treatment)

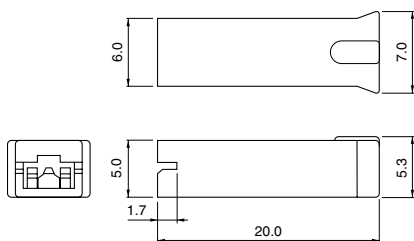
RoHS compliance

Contact	Crimping machine	Applicator		
		Crimp applicator	Dies	Crimp applicator with dies
SPS-01T-110	AP-K2N	MK-L-SPS	MK/SPS-01-110	APLMK SPS01-110
		—	—	—
SPS-41T-110		MK-L-SPS	MK/SPS-41-110	APLMK SPS41-110
		—	—	—
SPS-01T-187 (-8)		MK-L-SPS	MK/SPS-01-187	APLMK SPS01-187
		—	—	—
SPS-51T-187 (-8)		MK-L-SPS	MK/SPS-51-187	APLMK SPS51-187
		—	—	—
SPS-82T-187		MK-L-SPS	MK/SPS-82-187	APLMK SPS82-187
		—	—	—
SFPS-41T-187 (-8)		MKF-L-PS187	MK/SFPS-41-187	APL SFPS41-187
		—	—	—
SPS-21T-205 (-5)	MK-L-SPS	MK/SPS-21-205	APLMK SPS21-205	
	—	—	—	

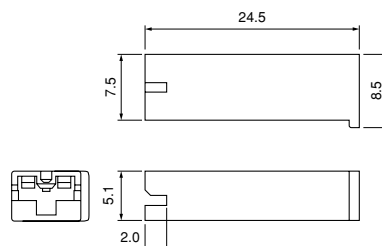
Contact	Crimping machine	Applicator		
		Crimp applicator	Dies	Crimp applicator with dies
SPS-51T-205	AP-K2N	MK-L-SPS	MK/SPS-51-205	APLMK SPS51-205
		—	—	—
SPS-21T-250 (S)		MK-L-SPS	MK/SPS-21-250	APLMK SPS21-250
		—	—	—
SPS-61T-250 (S)		MK-L-SPS	MK/SPS-61-250	APLMK SPS61-250
		—	—	—
SPS-91T-250 (S)		MK-L-SPS	MK/SPS-91-250	APLMK SPS91-250
		—	—	—
SFPS-61T-250		MKF-L-PS250	MK/SFPS-61-250	APL SFPS61-250
		—	—	—
SFPS-91T-250		MKF-L-PS9250	MK/SFPS-91-250	APL SFPS91-250
		—	—	—

Housing

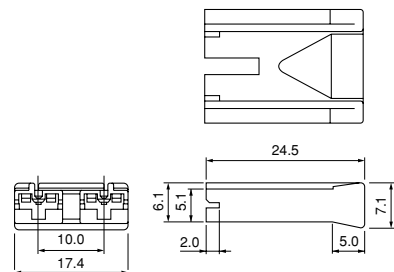
#110 Series PS-110



#187 Series PS-187



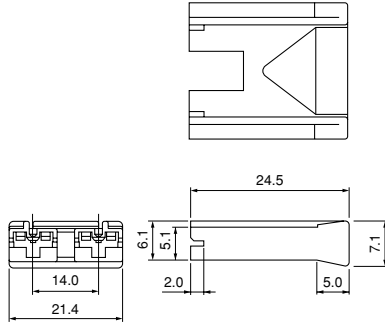
PS-187-2A-10



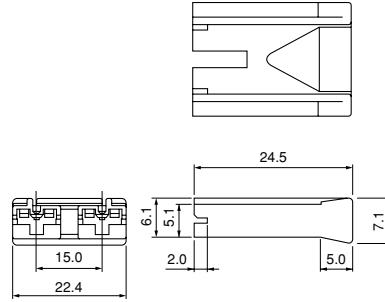
Housing

#187 Series

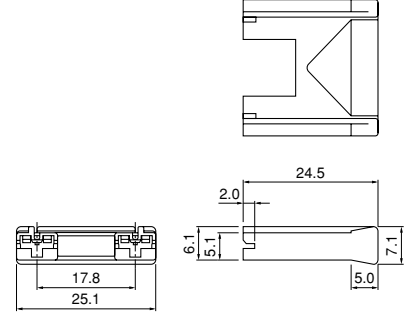
PS-187-2A-14



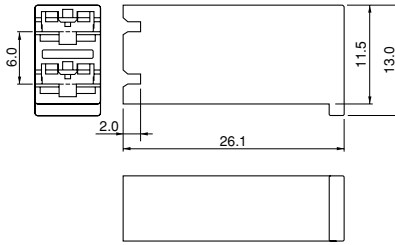
PS-187-2A-15



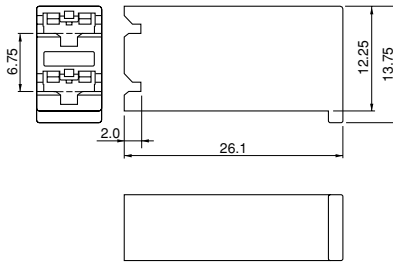
PS-187-2A-17.8



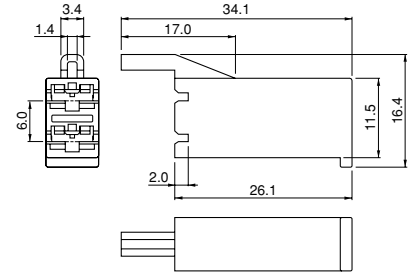
PS-187-2B



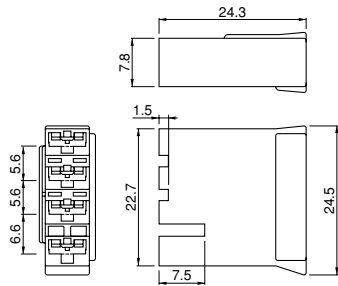
PS-187-2B-6.75



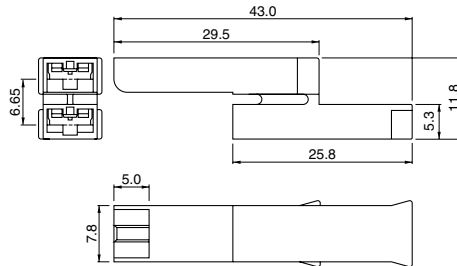
PS-187-2B1



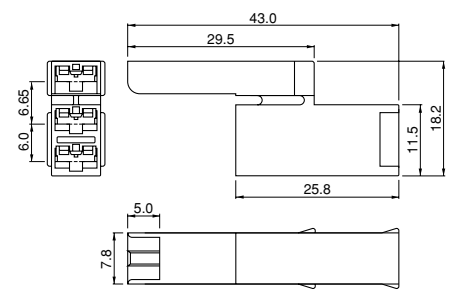
PS-187-4B



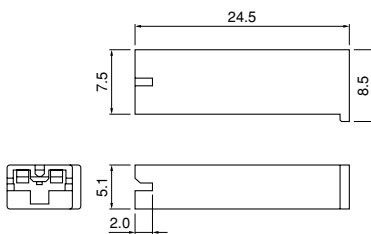
PS-187-2V



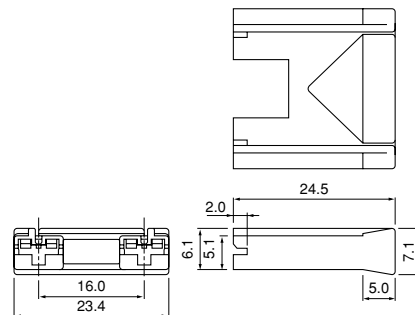
PS-187-3V



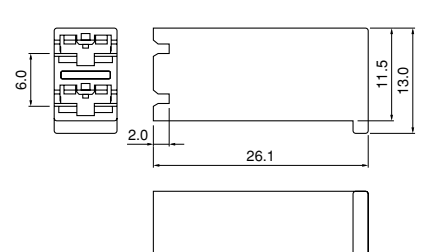
PS-187-8-H



PS-187-2A-16-8-H



PS-187-2B-8-H

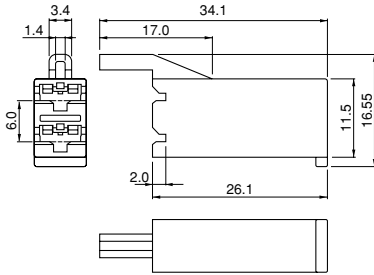


PS CONNECTOR

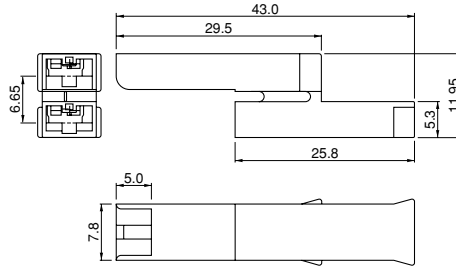
Housing

#187 Series

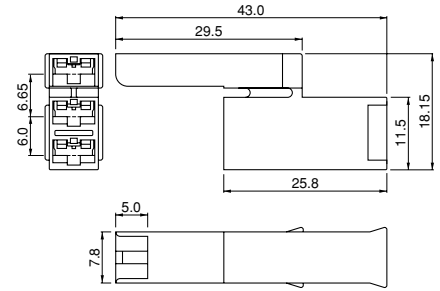
PS-187-2B1-8-H



PS-187-2V-8-H

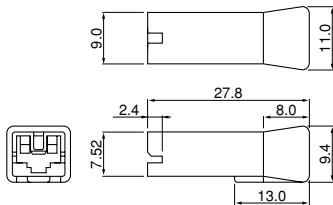


PS-187-3V-8-H



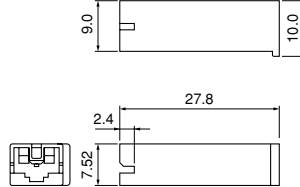
#250S Series

NPS-250-A

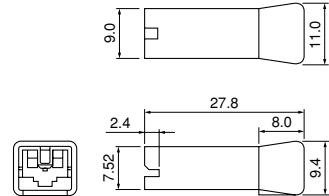


#250 Series

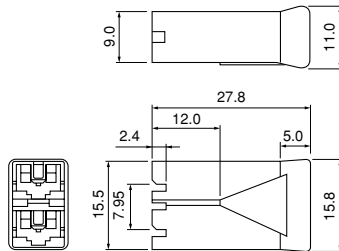
PS-250



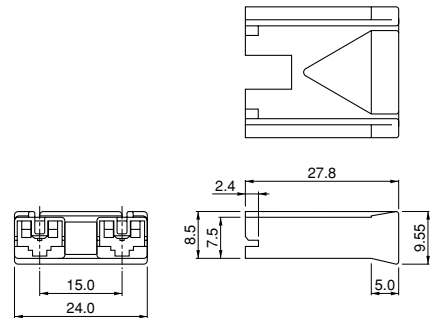
PS-250-A



PS-250-2B

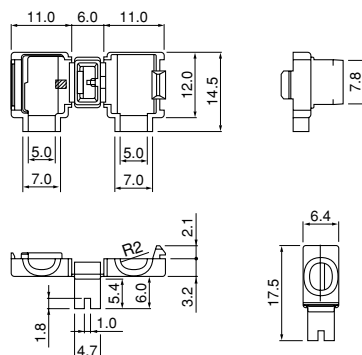


PS-250-2A-15

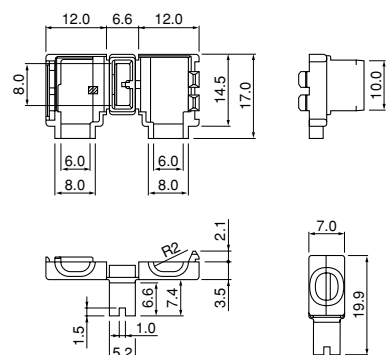


One-touch sleeve

FPS-187



FPS-250



PS CONNECTOR

Housing

Series	Model No.	Q'ty / bag	Applicable terminal
#110	PS-110	1,000	SPS-01T-110, SPS-41T-110
	PS-187	1,000	
#187	PS-187-2A-10	500	SPS-01T-187 SPS-51T-187 SPS-82T-187
	PS-187-2A-14	500	
	PS-187-2A-15	500	
	PS-187-2A-17.8	500	
	PS-187-2B	500	
	PS-187-2B-6.75	500	
	PS-187-2B1	500	
	PS-187-4B	500	SPS-01T-187-8 SPS-51T-187-8
	PS-187-2V	500	
	PS-187-3V	500	
	*PS-187-8-H	1,000	
	*PS-187-2A-16-8-H	500	
	*PS-187-2B-8-H	500	
	*PS-187-2B1-8-H	500	
#250S	NPS-250-A	1,000	SPS-21T-250S SPS-61T-250S SPS-91T-250S
	#250	PS-250	1,000
PS-250-A		500	
PS-250-2B		500	
One-touch sleeve	FPS-187	500	SFPS-41T-187
	FPS-250	500	SFPS-61T-250

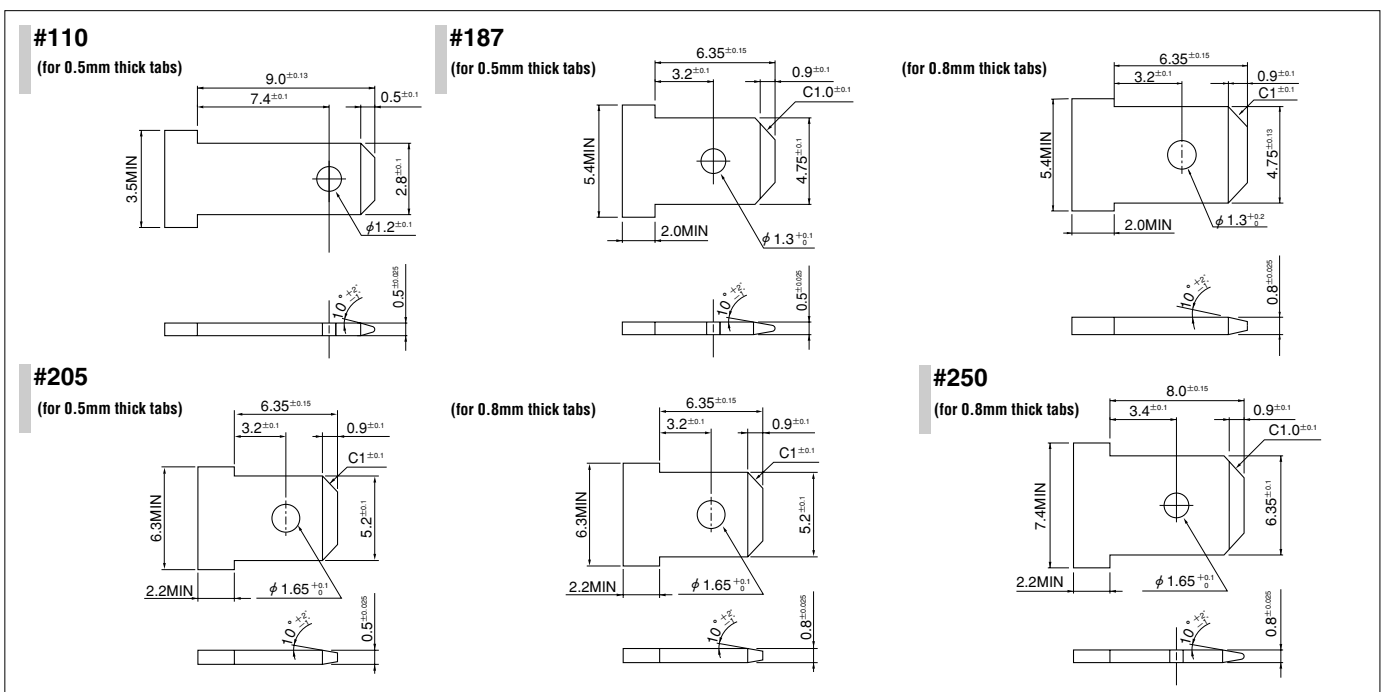
Material and Finish

PA 66, UL94V-0, natural (white)
UL94V-0, gray <*-marked housing... for 0.8mm thick tabs>

RoHS compliance

Note: FPS-187 and FPS-250 are UL recognized with File No. E55167 and CSA certified with File No. LR83372, but not TÜV approved.

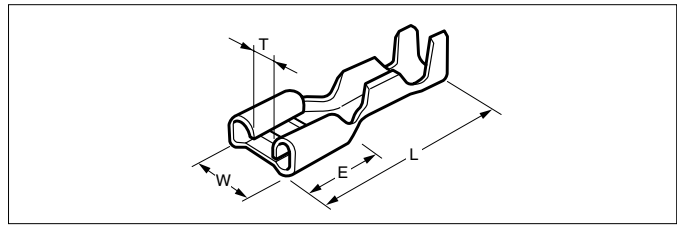
Applicable tab



- Note: 1. Contact JST when using PS connector for Micro-switch.
2. Make sure there are no unneeded ribs or other protuberances on tab surfaces.
3. Use the brass product for material.
4. Contact JST when using PS-187-4B.

CHAIN TERMINAL Made in Belgium

STO series (Tab-on Straight) <Made in Belgium>



UL Listed file No. E70188 DIN 46247

Model No.	Standard	Applicable wire			Material	Finish	Dimensions(mm)					Q'ty / reel	
		mm ²	AWG #	Insulation O.D. (mm)			W	L	E	T	Material thickness		Mating tab thickness
STO-1.0-250N	UL LISTED	0.5 to 1.0	20 to 18	2.0 to 3.3	Brass	—	7.6	19.2	7.6	1.6	0.45	0.8	5,000
STO-1.0T-250N						Tin-plated							
STO-1.0-250NL *	UL LISTED	0.5 to 1.0	20 to 18	2.0 to 3.3	Brass	—	7.6	19.2	7.6	1.6	0.45	0.8	
STO-1.0T-250NL *						Tin-plated							
STO-2.5-250N	UL LISTED	1.0 to 2.5	18 to 14	2.7 to 4.3	Brass	—	7.6	19.2	7.6	1.6	0.45	0.8	5,000
STO-2.5T-250N						Tin-plated							
STO-2.5-250NL *	UL LISTED	1.0 to 2.5	18 to 14	2.7 to 4.3	Brass	—	7.6	19.2	7.6	1.6	0.45	0.8	
STO-2.5T-250NL *						Tin-plated							
STO-6.0-250N	UL LISTED	2.5 to 6.0	14 to 10	3.9 to 5.1	Brass	—	7.6	19.2	7.6	1.6	0.45	0.8	4,000
STO-6.0T-250N						Tin-plated							
STO-1.0-187N-5	UL LISTED	0.5 to 1.0	20 to 18	2.0 to 3.3	Brass	—	5.8	15.6	6.4	1.0	0.35	0.5	8,000
STO-1.0T-187N-5						Tin-plated							
STO-1.0-187N-8						—							
STO-1.0T-187N-8						Tin-plated							
STO-0.25-110N-5		0.1 to 0.25	26 to 24	1.3 to 1.5	Brass	—	3.7	14.5	6.2	0.3	0.25	0.5	15,000
STO-0.25T-110N-5						Tin-plated							
STO-0.25-110N-8						—							
STO-0.25T-110N-8						Tin-plated							
STO-0.5-110N-5	UL LISTED	0.25 to 0.5	24 to 20	1.5 to 2.0	Brass	—	3.7	14.5	6.2	0.3	0.25	0.5	15,000
STO-0.5T-110N-5						Tin-plated							
STO-0.5-110N-8						—							
STO-0.5T-110N-8						Tin-plated							
STO-1.0-110N-5	UL LISTED	0.5 to 1.0	20 to 18	2.0 to 3.3	Brass	—	3.7	14.5	6.2	0.3	0.25	0.5	15,000
STO-1.0T-110N-5						Tin-plated							
STO-1.0-110N-8						—							
STO-1.0T-110N-8						Tin-plated							
STO-1.0-110B-5		0.5 to 1.0	20 to 18	2.0 to 3.3	Brass	—	3.7	14.5	6.2	0.3	0.25	0.5	15,000
STO-1.0T-110B-5						Tin-plated							
STO-1.0-110B-8						—							
STO-1.0T-110B-8						Tin-plated							

RoHS compliance

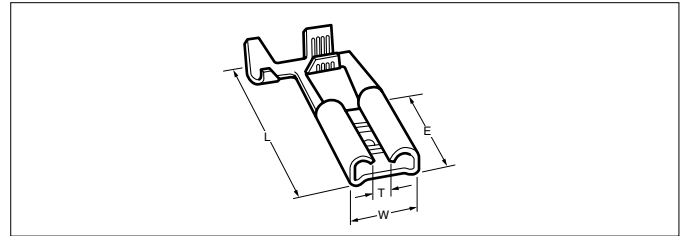
Note: 1. Terminals of phosphor bronze or nickel-silver are also available. Contact J.S.T. Belgium N.V. for details
2. *L=Low insertion force type.

Crimping machine, Applicator

Contact	Crimping machine	Applicator		
		Crimp applicator	Dies	Crimp applicator with dies
STO-0.25(T)-110N-5	AP-K2N	MK-L	MK/STO-0.25-110N	APLMK STO025-110N
STO-0.25(T)-110N-8			MK/STO-0.25-110N	APLMK STO025-110N
STO-0.5(T)-110N-5			MK/STO-0.5-110N	APLMK STO05-110N
STO-0.5(T)-110N-8			MK/STO-0.5-110N	APLMK STO05-110N
STO-1.0(T)-110N-5			MK/STO-1.0-110N	APLMK STO10-110N
STO-1.0(T)-110N-8			MK/STO-1.0-110N	APLMK STO10-110N
STO-1.0(T)-187N-5			MK/STO-1.0-187N	APLMK STO10-187N
STO-1.0(T)-187N-8			MK/STO-1.0-187N	APLMK STO10-187N
STO-1.0(T)-250N			MK/STO-1.0-250N	APLMK STO10-250N
STO-2.5(T)-250N			MK/STO-2.5-250N	APLMK STO25-250N
STO-6.0(T)-250N			MK/STO-6.0-250N	APLMK STO60-250N

CHAIN TERMINAL

SFO series (Tab-on flag) <Made in Belgium>



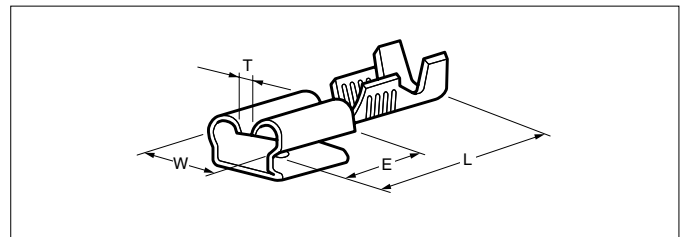
UL LISTED Listed file No. E70188 DIN 46346

Model No.	Standard	Applicable wire			Material	Finish	Dimensions(mm)					Q'ty / reel	
		mm ²	AWG #	Insulation O.D. (mm)			W	L	E	T	Material thickness		Mating tab thickness
SFO-1.0-250N	UL LISTED	0.5 to 1.0	20 to 18	2.0 to 3.3	Brass	—	7.6	14.1	7.6	2.3	0.4	0.8	3,000
SFO-1.0T-250N						Tin-plated							
SFO-2.5-250N	UL LISTED	1.0 to 2.5	18 to 14	2.7 to 4.3		—	14.2	7.6	2.3	0.4	0.8		
SFO-2.5T-250N						Tin-plated							

RoHS compliance

Note: Terminals of phosphor bronze or nickel-silver are also available. Contact J.S.T. Belgium N.V. for details.

SPB series (Tab-on piggyback) <Made in Belgium>



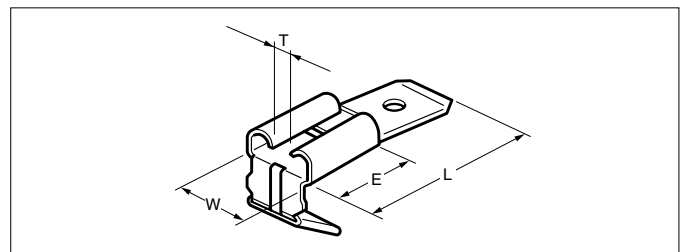
DIN 46345

Model No.	Standard	Applicable wire			Material	Finish	Dimensions(mm)					Q'ty / reel		
		mm ²	AWG #	Insulation O.D. (mm)			W	L	E	T	Material thickness		Mating tab thickness	
SPB-1.0-250N-S		0.5 to 1.0	20 to 18	2.0 to 3.3	Brass	—	7.6	19.0	7.7	2.2	0.39	0.8	1,300	
SPB-1.0T-250N-S						Tin-plated								
SPB-2.5-250N-S		1.0 to 2.5	18 to 14	2.7 to 4.3		Brass	—	7.6	19.0	7.7	2.2	0.39		0.8
SPB-2.5T-250N-S							Tin-plated							

RoHS compliance

Note: Terminals of phosphor bronze or nickel-silver are also available. Contact J.S.T. Belgium N.V. for details.

MPB series (Tab-on with two tabs) <Made in Belgium>



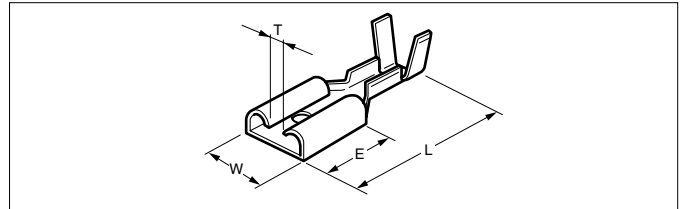
UL LISTED Listed file No. E70188 DIN 46347

Model No.	Standard	Material	Finish	Dimensions(mm)							Q'ty / reel
				W	L	E	T	Material thickness	Tab thickness	Mating tab thickness	
MPB-250	UL LISTED	Brass	—	7.6	18.3	7.5	2.4	0.39	0.8	0.8	10,000
MPB-T-250			Tin-plated								7,500

RoHS compliance

CHAIN TERMINAL

STI series (Tab-in, with dimple) <Made in Belgium>

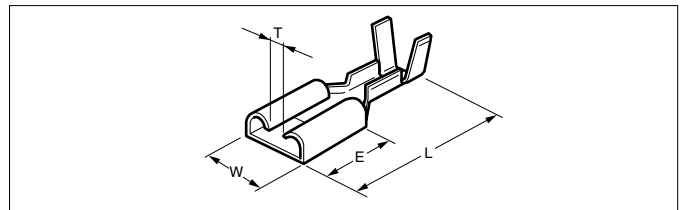


DIN 46340

Model No.	Standard	Applicable wire			Material	Finish	Dimensions(mm)					Q'ty / reel	
		mm ²	AWG #	Insulation O.D. (mm)			W	L	E	T	Material thickness		Mating tab thickness
STI-1.0-250D		0.5 to 1.0	20 to 18	2.0 to 3.3	Brass	—	7.4	20.0	7.6	1.5	0.35	0.8	5,000
STI-1.0T-250D						Tin-plated							
STI-2.5-250D		1.0 to 2.5	18 to 14	2.7 to 4.3	Brass	—	7.4	20.0	7.6	1.5	0.35	0.8	4,000
STI-2.5T-250D						Tin-plated							

RoHS compliance

STI series (Tab-in, without dimple) <Made in Belgium>

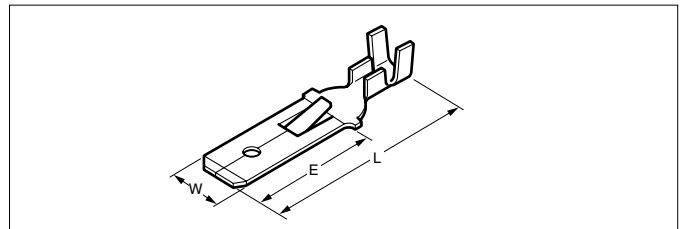


DIN 46340

Model No.	Standard	Applicable wire			Material	Finish	Dimensions(mm)					Q'ty / reel	
		mm ²	AWG #	Insulation O.D. (mm)			W	L	E	T	Material thickness		Mating tab thickness
STI-1.0-250N		0.5 to 1.0	20 to 18	2.0 to 3.3	Brass	—	7.4	20.0	7.6	1.5	0.35	0.8	5,000
STI-1.0T-250N						Tin-plated							
STI-2.5-250N		1.0 to 2.5	18 to 14	2.7 to 4.3	Brass	—	7.4	20.0	7.6	1.5	0.35	0.8	4,000
STI-2.5T-250N						Tin-plated							

RoHS compliance

SIM series (Tab-in) <Made in Belgium>



DIN 46343

Model No.	Standard	Applicable wire			Material	Finish	Dimensions(mm)					Q'ty / reel
		mm ²	AWG #	Insulation O.D. (mm)			W	L	E	Material thickness	Tab thickness	
SIM-1.0-250D		0.5 to 1.0	20 to 18	2.0 to 3.3	Brass	—	6.3	28.0	16.0	0.39	0.82	4,000
SIM-1.0T-250D						Tin-plated						
SIM-1.0-250DU						—						
SIM-1.0T-250DU						Tin-plated						
SIM-2.5-250D		1.0 to 2.5	18 to 14	2.7 to 4.3	Brass	—	6.3	28.0	16.0	0.39	0.82	3,000
SIM-2.5T-250D						Tin-plated						
SIM-2.5-250DU						—						
SIM-2.5T-250DU						Tin-plated						

RoHS compliance

Note: Lance height D = 2.3 mm DU = 2.7 mm ...this dimension is not according to DIN.

CHAIN TERMINAL

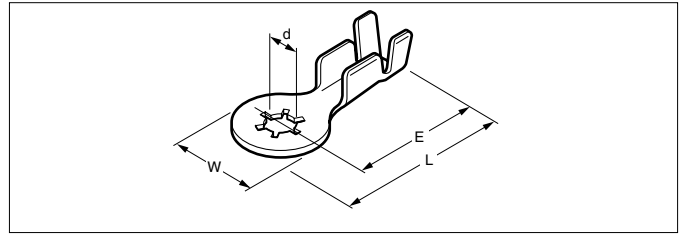
Crimping machine, Applicator

Contact	Crimping machine	Applicator		
		Crimp applicator	Dies	Crimp applicator with dies
SFO-1.0(T)-250N	AP-K2N	MKS-L-FO	MK/SFO-1.0-250N	APLMK SFO10-250N
SFO-2.5(T)-250N			MK/SFO-2.5-250N	APLMK SFO25-250N
SPB-1.0(T)-250N-S		MKS-L	MK/SPB-1.0-250NS	APLMK SPB1.0-250N
SPB-2.5(T)-250N-S			MK/SPB-2.5-250NS	APLMK SPB2.5-250N

Contact	Crimping machine	Applicator		
		Crimp applicator	Dies	Crimp applicator with dies
SIM-1.0(T)-250D	AP-K2N	MK-L-IM	MK/SIM-1.0-250D	APLMK SIM1.0-250D
SIM-2.5(T)-250D			MK/SIM-2.5-250D	APLMK SIM2.5-250D
STI-1.0(T)-250D		MK-L	MK/STI-1.0-250D/N	APLMK STI1.0-250D/N
STI-1.0(T)-250N			MK/STI-1.0-250D/N	APLMK STI1.0-250D/N
STI-2.5(T)-250D			MK/STI-2.5-250D/N	APLMK STI2.5-250D/N
STI-2.5(T)-250N			MK/STI-2.5-250D/N	APLMK STI2.5-250D/N

CHAIN TERMINAL

SRT series <Made in Belgium>



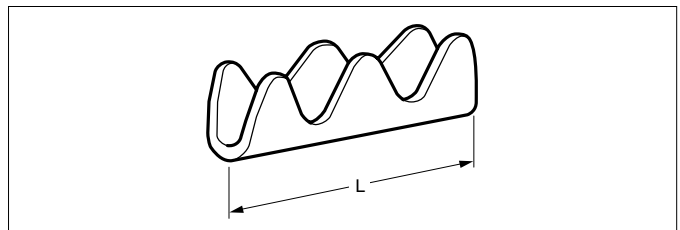
Recognized E42024

Certified LR20812

Model No.	Standard	Applicable wire			Material	Finish	Dimensions(mm)					Q'ty / reel
		mm ²	AWG #	Insulation O.D. (mm)			W	L	E	d (dia.)	Material thickness	
SRT-1.0T-M5S		0.5 to 1.0	20 to 18	2.0 to 3.3	Steel	Tin-plated	9.5	21.75	17.0	5.3	0.6	4,000
SRT-2.5T-M5S		1.0 to 2.5	18 to 14	2.7 to 4.3								

RoHS compliance

SPC series (Splice) <Made in Belgium>



Model No.	Standard	Applicable wire		Material	Finish	Dimensions(mm)		Q'ty / reel
		mm ²	AWG #			L	Material thickness	
SPC-1.0		0.5 to 1.0	20 to 18	Brass	—	6.0	0.25	30,000
SPC-1.0T					Tin-plated			
SPC-2.5	1.0 to 2.5	18 to 14	—		7.0			
SPC-2.5T			Tin-plated					

RoHS compliance

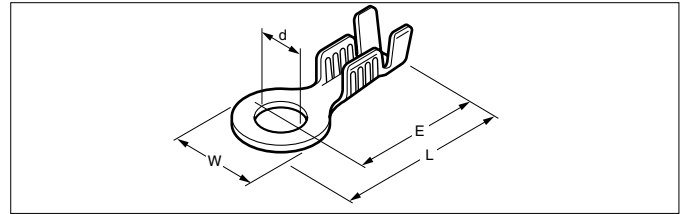
Note: The applicable wire size (total sectional area) above serves as a basic guideline. Before use, the performance of this connector must be tested with the wire that is to be used.

Crimping machine, Applicator

Contact	Crimping machine	Applicator		
		Crimp applicator	Dies	Crimp applicator with dies
SRT-1.0T/N-M5S	AP-K2N	MK-L	MK/SRT-1.0	APLMK SRT1.0-M5
SRT-2.5T/N-M5S			MK/SRT-2.5	APLMK SRT2.5-M5
SPC-1.0(T)		MK-L-PC	MK/SPC-1.0	APLMK SPC1.0
SPC-2.5(T)			MK/SPC-2.5	APLMK SPC2.5

CHAIN TERMINAL

SRB series (With insulation grip) <Made in Belgium>



Listed file No. E42024 DIN 46225 (except *-marked items)

Model No.	Standard	Applicable wire			Material	Finish	Dimensions(mm)					Q'ty / reel
		mm ²	AWG #	Insulation O.D. (mm)			W	L	E	d (dia.)	Material thickness	
SRB-1.0-M3		0.5 to 1.0	20 to 18	2.0 to 3.3	Brass	—	8.0	21.0	17.0	3.2	0.6	5,000
SRB-1.0T-M3						Tin-plated						
SRB-1.0-M3-W9.5 *						—						
SRB-1.0T-M3-W9.5 *	Tin-plated											
SRB-2.5-M3	—											
SRB-2.5T-M3	Tin-plated											
SRB-2.5-M3-W9.5 *		1.0 to 2.5	18 to 14	2.7 to 4.3	Brass	—	8.0	21.0		4,000		
SRB-2.5T-M3						Tin-plated						
SRB-2.5-M3-W9.5 *						—						
SRB-2.5T-M3-W9.5 *	Tin-plated											
SRB-1.0-M4		0.5 to 1.0	20 to 18	2.0 to 3.3	Brass	—	8.0	21.0		4.3	0.6	5,000
SRB-1.0T-M4						Tin-plated						
SRB-1.0-M4-W9.5 *						—						
SRB-1.0T-M4-W9.5 *	Tin-plated											
SRB-2.5-M4		1.0 to 2.5	18 to 14	2.7 to 4.3	Brass	—	8.0	21.0	4,000			
SRB-2.5T-M4						Tin-plated						
SRB-2.5-M4-W9.5 *						—						
SRB-2.5T-M4-W9.5 *	Tin-plated											
SRB-1.0-M5-W8 *		0.5 to 1.0	20 to 18	2.0 to 3.3	Brass	—	8.0	21.0	5.3	0.6	5,000	
SRB-1.0T-M5-W8 *						Tin-plated						
SRB-1.0-M5						—						
SRB-1.0T-M5	Tin-plated											
SRB-2.5-M5-W8 *		1.0 to 2.5	18 to 14	2.7 to 4.3	Brass	—	8.0	21.0				4,000
SRB-2.5T-M5-W8 *						Tin-plated						
SRB-2.5-M5						—						
SRB-2.5T-M5	Tin-plated											
SRB-1.0-M6 *		0.5 to 1.0	20 to 18	2.0 to 3.3	Brass	—	9.5	21.75	6.5	0.6	4,000	
SRB-1.0T-M6 *						Tin-plated						
SRB-2.5-M6 *		1.0 to 2.5	18 to 14	2.7 to 4.3	Brass	—	9.5	21.75	6.5	0.6	4,000	
SRB-2.5T-M6 *						Tin-plated						

RoHS compliance

Crimping machine, Applicator

Contact	Crimping machine	Applicator		
		Crimp applicator	Dies	Crimp applicator with dies
SRB-1.0(T)-M3/4	AP-K2N	MK-L	MK/SRB-1.0-W8	APLMK SRB10-W8
SRB-1.0(T)-M5-W8			MK/SRB-1.0-W8	APLMK SRB10-W8
SRB-1.0(T)-M3/4-W9.5			MK/SRB-1.0-W9.5	APLMK SRB10-W9.5
SRB-1.0(T)-M5/6			MK/SRB-1.0-W9.5	APLMK SRB10-W9.5
SRB-2.5(T)-M3/4			MK/SRB-2.5-W8	APLMK SRB25-W8
SRB-2.5(T)-M5-W8			MK/SRB-2.5-W8	APLMK SRB25-W8
SRB-2.5(T)-M3/4-W9.5			MK/SRB-2.5-W9.5	APLMK SRB25-W9.5
SRB-2.5(T)-M5/6			MK/SRB-2.5-W9.5	APLMK SRB25-W9.5

* Compliant with RoHS.

* Refer to "General Instruction and Notice when using Terminals and Connectors" at the end of this catalog.

* Contact JST for details.