


## SKINDICHT® KU/KUS Reducers

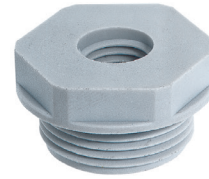
Polyamide Reducers for PG SKINTOP® Cable Glands

### Technical Data

 <b>Material:</b>	Glass fiber reinforced polyamide
 <b>Temperature Range:</b>	-40°C to +100°C
 <b>Color:</b>	Light gray (RAL 7035)

Part Number	Thread Type & Size Male to Female	Standard Pack Size	Part Number	Thread Type & Size Male to Female	Standard Pack Size
<b>KU PG Reducers</b>			<b>KUS PG Reducers</b>		
51730010	PG 11 → 7	50	52025160	PG 42 → 21	25
52025100	PG 13 → 7	50	52025170	PG 42 → 29	25
52025110	PG 16 → 9	50	52025060	PG 42 → 36	25
52025120	PG 21 → 11	25	52025180	PG 48 → 29	25
51730040	PG 21 → 13	25	52025190	PG 48 → 36	25
52025130	PG 29 → 13	25	52025070	PG 48 → 42	25
51730050	PG 29 → 16	25	<b>KUS PG Reducers</b>		
52025140	PG 36 → 16	25	52025040	PG 9 → 7	50
52025150	PG 36 → 21	25	51730060	PG 11 → 9	50
52025050	PG 36 → 29	25	51730070	PG 13 → 11	50
			51730080	PG 16 → 13	50

KU PG Reducer



KUS PG Reducer



SKINDICHT® KU/KUS reducers allow the use of cable glands with smaller connection threads than the existing thread hole.


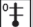
### Approvals



## SKINDICHT® ME/ME-M Enlargers

Nickel-Plated Brass Enlargers for PG & Metric SKINTOP® Cable Glands

### Technical Data

 <b>Material:</b>	Nickel-plated brass
- O-ring (metric only):	NBR
 <b>Temperature Range:</b>	-60°C to +200°C

Part Number	Thread Type & Size Male to Female	Standard Pack Size	Part Number	Thread Type & Size Male to Female	Standard Pack Size
<b>PG Enlargers</b>			<b>Metric Enlargers</b>		
52003990	PG 7 → 9	100	52104450	M12 → 16	100
52004000	PG 9 → 11	100	52104452	M16 → 20	100
52004010	PG 9 → 13	100	52104454	M20 → 25	100
52004020	PG 11 → 13	100	52104456	M25 → 32	50
52004030	PG 11 → 16	100	52104458	M32 → 40	50
52004040	PG 11 → 21	100	52104460	M40 → 50	25
52004050	PG 13 → 16	100	52104462	M50 → 63	25
52004060	PG 13 → 21	50			
52004070	PG 16 → 21	50			
52004080	PG 16 → 29	50			
52004090	PG 21 → 29	50			
52004100	PG 29 → 36	50			
52004110	PG 36 → 42	10			
52004120	PG 42 → 48	10			



SKINDICHT® ME/ME-M enlargers allow the use of cable glands with larger connection threads than the existing threaded hole.

### Approvals

