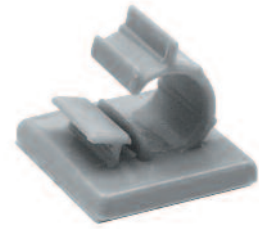
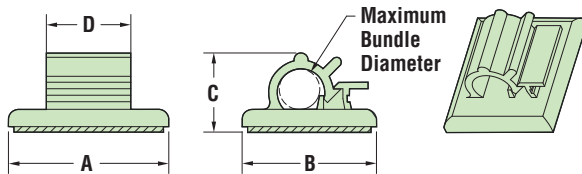


## HEYClip™ Locking Releasable Wire Clips - Adhesive-Back Mount

MAXIMUM BUNDLE DIAMETER	RATED STATIC LOAD	PART NO. Adhesive	DESCRIPTION			FOOTPRINT		OVERALL HEIGHT		CLAMP WIDTH		
			Standard	Black	Super Black	A x B	C	D				
in. mm.	lb.	Gray	Black	Black		in.	mm.	in.	mm.	in.	mm.	
<b>WCA Series</b>												
.19	4,7	1/2	3857	3917	-	WCA 187-500	.74 x .62	18,8 x 15,7	.34	8,6	.39	9,9
.25	6,4	3/4	3858	3918	3918A	WCA 250-750	1.00 x .87	25,4 x 22,1	.42	10,7	.63	16,0
.38	9,5	1	3859	3919	3919A	WCA 375-1000	1.00 x 1.00	25,4 x 25,4	.50	12,7	.63	16,0
.50	12,7	1-1/4	3860	3920	3920A	WCA 500-1250	1.00 x 1.21	25,4 x 30,7	.68	17,3	.64	16,3
.75	19,1	1-3/4	3861	3921	-	WCA 750-1750	1.15 x 1.45	29,2 x 36,8	.99	25,1	.64	16,3
1.00	25,4	4	3867	3923	-	WCA1000-4000	1.98 x 2.24	50,3 x 56,9	1.37	34,8	1.26	32,0
1.50	38,1	6	3868	3930	-	WCA 1500-6000	2.42 x 2.95	61,5 x 74,9	1.77	45,0	1.31	33,3

Standard color gray or black. Super duty adhesive backing available as shown.

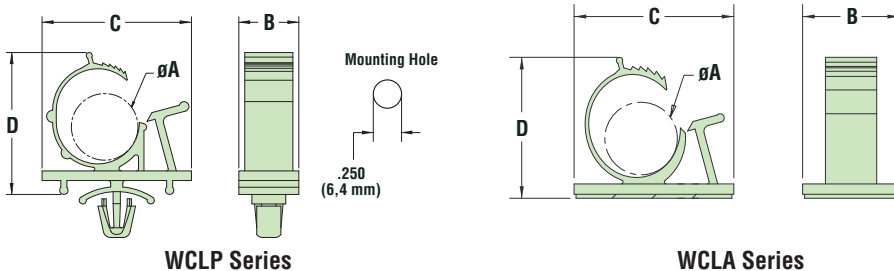


- Adhesive backing on part has a tab for easy removal.
- Releasable and reusable clips for easy wire bundle routing.
- Quick and easy installation—simply peel off backing and press into place.
- Multiple sizes for bundles from .19" (4,7 mm) to 1.50" (38,1 mm) in diameter.
- Static Loads pertain to parts fastened to a flat, clean, and dry surface.
- Three sizes in Super Adhesive Black.

## HEYClip™ Locking Releasable Wire Clips - Adjustable

MAXIMUM BUNDLE DIAMETER RANGE	PART NO.	DESCRIPTION	OVERALL HEIGHT		FOOTPRINT				
			D *	B x C					
Minimum Maximum	Natural		in.	mm.	in.	mm.			
in. mm. in. mm.									
<b>WCLP Series - Arrowhead Mount</b>									
.47	11,9	.55	14,0	4335	WCLP 562	1.17	29,8	.50 x 1.24	12,7 x 31,5
.58	14,7	.75	19,1	4336	WCLP 750	1.36	34,5	.50 x 1.48	12,7 x 37,6
<b>WCLA Series - Adhesive Mount**</b>									
.22	5,5	.26	6,5	4323	WCLA 258	.74	18,8	.65 x .85	16,5 x 21,6
.31	7,9	.41	10,3	4324	WCLA 406	.90	22,8	.75 x 1.00	19,1 x 25,4
.47	11,9	.56	14,3	4325	WCLA 562	1.12	28,5	.75 x 1.24	19,1 x 31,5
.58	14,7	.75	19,1	4326	WCLA 750	1.32	33,6	.75 x 1.50	19,1 x 38,1
.87	22,2	1.00	25,4	4327	WCLA 1000	1.78	45,3	1.00 x 1.97	25,4 x 50,1

Standard color natural. \*At maximum wire capacity. \*\*Adhesive-Back is 1/16" (1,6 mm) thick.



Material	Nylon 6/6
Flammability Rating	94V-2
Temperature Range	-20°F (-29°C) to 150°F (66°C) (Adhesive-Back) -40°F (-40°C) to 185°F (85°C) (Adjustable)



### WCLP Series:

- Gather and route wires.
- Adjust to diameter needed to bundle.
- Push mount design allows for fast installation.

### WCLA Series:

- Lock securely and easily. Re-open for routing changes.
- Ratcheting clip holds bundle securely in place.
- Good for high vibration applications. Once closed the clip will not open until tab is released.

Quick Specs