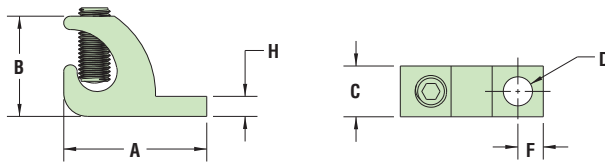


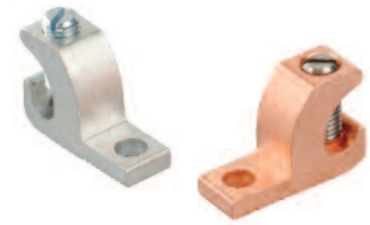
## Heyco® Copper and Aluminum Lay-In Connectors

Wire Range AWG	PART NO.	DESCRIPTION	CONSTRUCTION	PART DIMENSIONS (in.)					
				A	B	C	D	F	H
4-14	S6525	LC 14-4 1-Pole Cu Tinned	Tinned Copper with Stainless Steel Set Screw	1.07	.75	.38	.22	.19	.15
	S6526	LC 14-4 1-Pole Cu	Copper with Stainless Steel Set Screw						
	S6527	LC 14-4 1-Pole Al	Aluminum with Steel Set Screw						



LCC and LCA Series

Material	Tinned copper or copper with stainless steel set screw; or High Strength, High Conductive Aluminum Alloy 6061T6 with steel set screw
Certifications	Listed under Underwriters' Laboratories File E467246

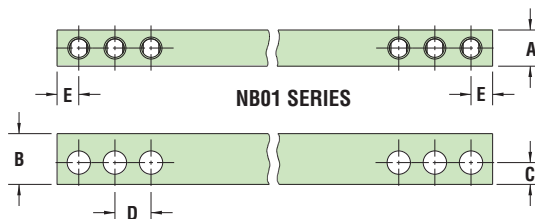


- Copper construction parts available in plated and unplated versions.
- Copper construction parts UL/CSA approved for direct burial and suitable for both indoor and out door use.
- Least expensive aluminum option suitable for indoor use only.
- **Recommended wire range AWG 4 thru AWG 14.**
- DFARS Compliant

## Heyco® Aluminum Neutral Bars

WIRE RANGE AWG	CIRCUITS No.	MOUNTING HOLE(S)		LENGTH in.	PART NO.	DESCRIPTION	UL/CSA	PART DIMENSIONS (in.)				
		No.	Pos(s).					Width A	Height B	C	Pitch D	E
4-14 Cu or 4-12 Al	2	1	2	1.00	S6535	NB 14-4 2-Pole	CU9AL	.312	.437	.187	.312	.187
	3	2	1 & 5	1.63	S6536	NB 14-4 3-Pole						
	5	2	1 & 7	2.25	S6537	NB 14-4 5-Pole						
	6	1	4	2.25	S6538	NB 14-4 6-Pole						
		2	1 & 8	2.56	S6539							
	10	2	1 & 12	3.81	S6540	NB 14-4 10-Pole						
12	2	1 & 14	4.44	S6541	NB 14-4 12-Pole							

Other wire ranges, bar sizes, materials and configurations are available, consult Heyco



NB01 SERIES

Materials	High strength tempered aluminum Alloy 6061, tin plated to resist oxidation and galvanic corrosion and with conductivity of approximately 43% IACS. Zinc plated steel screws with trivalent (Cr+3) chromate conversion top layer.
Certifications	UL Recognized Class ZMVV2.E80121 and  CSA Certified File 8919



- Neutral bar for ground or power; **not** for power distribution.
- Rated at **85 Amps for Copper** wire and **70 Amps for Aluminum** wire.
- Wire range: AWG 4-14 CU (copper wire), 4-12 Al (aluminum wire) Dual Rated, Solid & Stranded, rigid or semi rigid stranding.
- Set screws are slotted, headless, zinc plated steel and will hold the smaller wires when the appropriate torque is fully applied.
- Use #10 mounting screw.
- DFARS Compliant

Quick  
Specs