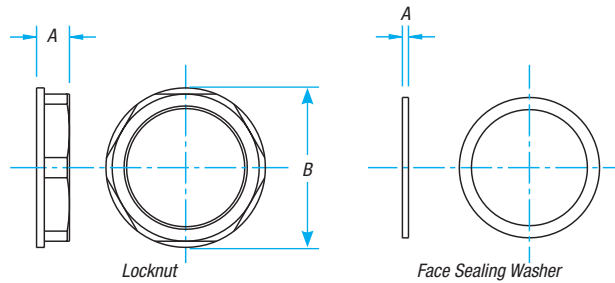


Sealed Fittings

Locknuts and Face Sealing Washers

Non-metallic locknuts, face sealing washers and blanking plugs designed for use with Harnessflex® cable glands, enclosures and sealed fittings to connect to knockouts and threaded entries.



CAT. NO.	THREAD SIZE	A	B (A/F)
Locknuts			
LNP-M16	M16x1.5	7	19
LNP-M20	M20x1.5	8	23
LNP-M25	M25x1.5	9	28
LNP-M32	M32x1.5	9	36
LNP-M40	M40x1.5	10	46
LNP-M50	M50x1.5	10	60
LNP-PG07	PG07	5	19
LNP-PG09	PG09	5	22
LNP-PG11	PG11	5	24
LNP-PG13	PG13.5	6	27
LNP-PG16	PG16	6	30
LNP-PG21	PG21	7	36
LNP-PG29	PG29	7	46
LNP-PG36	PG36	9	56
LNP-PG48	PG48	9	59
Face Sealing Washers			
SWM16	M16	1.5	—
SWM20	M20	1.5	—
SWM25	M25	1.5	—
SWM32	M32	1.5	—
SWM40	M40	1.5	—
SWM50	M50	1.5	—
SWPG07	PG07	1.2	—
SWPG09	PG09	1.2	—
SWPG11	PG11	1.2	—
SWPG13	PG13.5	1.2	—
SWPG16	PG16	1.2	—
SWPG21	PG21	1.2	—
SWPG29	PG29	1.2	—
SWPG36	PG36	1.2	—
SWPG48	PG48	1.2	—