

PMAFIX® IP66, IP68, IP68GT

PMAFIX® connectors

The designation PMAFIX® describes a very large range of connectors for PMA® conduits with the patented PMA® safety clip system. Connectors are available for ingress protection IP66 and IP68. IP66 connectors are fitted with a pre-installed universal safety clip, which ensures a quick “push-in” installation. IP68 connectors for increased requirements will be delivered with a special conduit seal cap. The new PMAFIX® IP68GT fittings combine simplest push-in assembly with highest sealing performance.

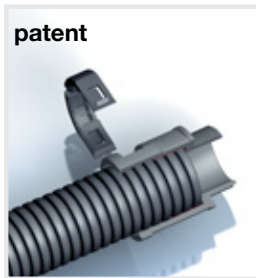
General technical details

Material

- Fittings made from specially formulated polyamide 6
- Threads made from nickel-plated brass or polyamide 6
- Self-extinguishing
- Free from halogens, REACH + ROHS compliant
- Very good chemical properties
- Temperature range: –40 °C to +105 °C, short-term to +160 °C

Characteristics

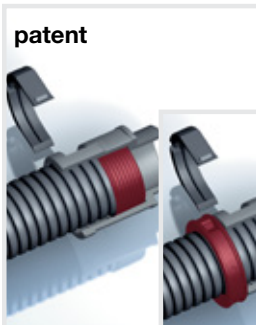
- Excellent conduit pull-out strength
- High impact resistance
- Vibration-proof connection to PMA® corrugated conduits
- Fits conduit profiles fine (T) and coarse (G)
- To avoid accidental opening, disassembling only possible with a screwdriver



IP66

IP66 static
IP54 dynamic

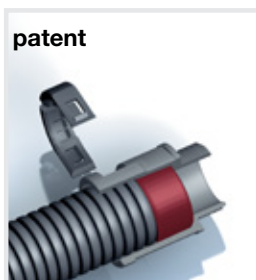
- One-piece fitting
- Conical sealing method
- Easy push-in installation
- Pre-installed safety clip AFN2
- Content of delivery: Connector with pre-installed safety clip



IP68

IP68 static
IP67 dynamic
IP69K according
to DIN 40050

- High sealing through additional seal cap
- For highest dynamic applications
- Additional water protection ring WPS for IP69K ingress protection in conjunction with the IP68 system fitted against the IP68 connector onto the conduit
- Content of delivery: Connector with sealing cap, safety clip and thread seal for male thread (O-ring and/or flat gasket)



IP68GT

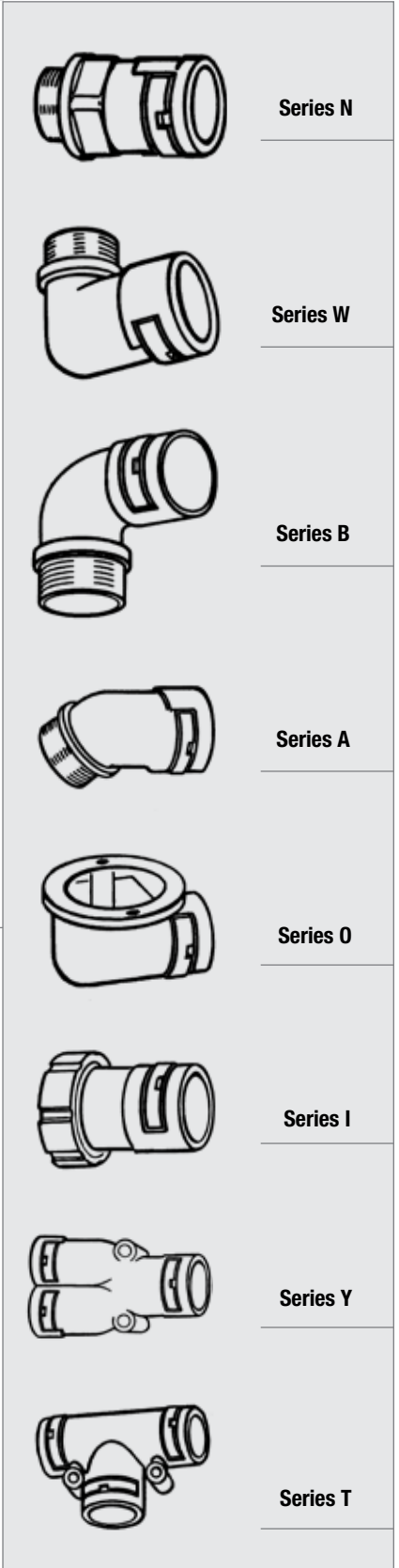
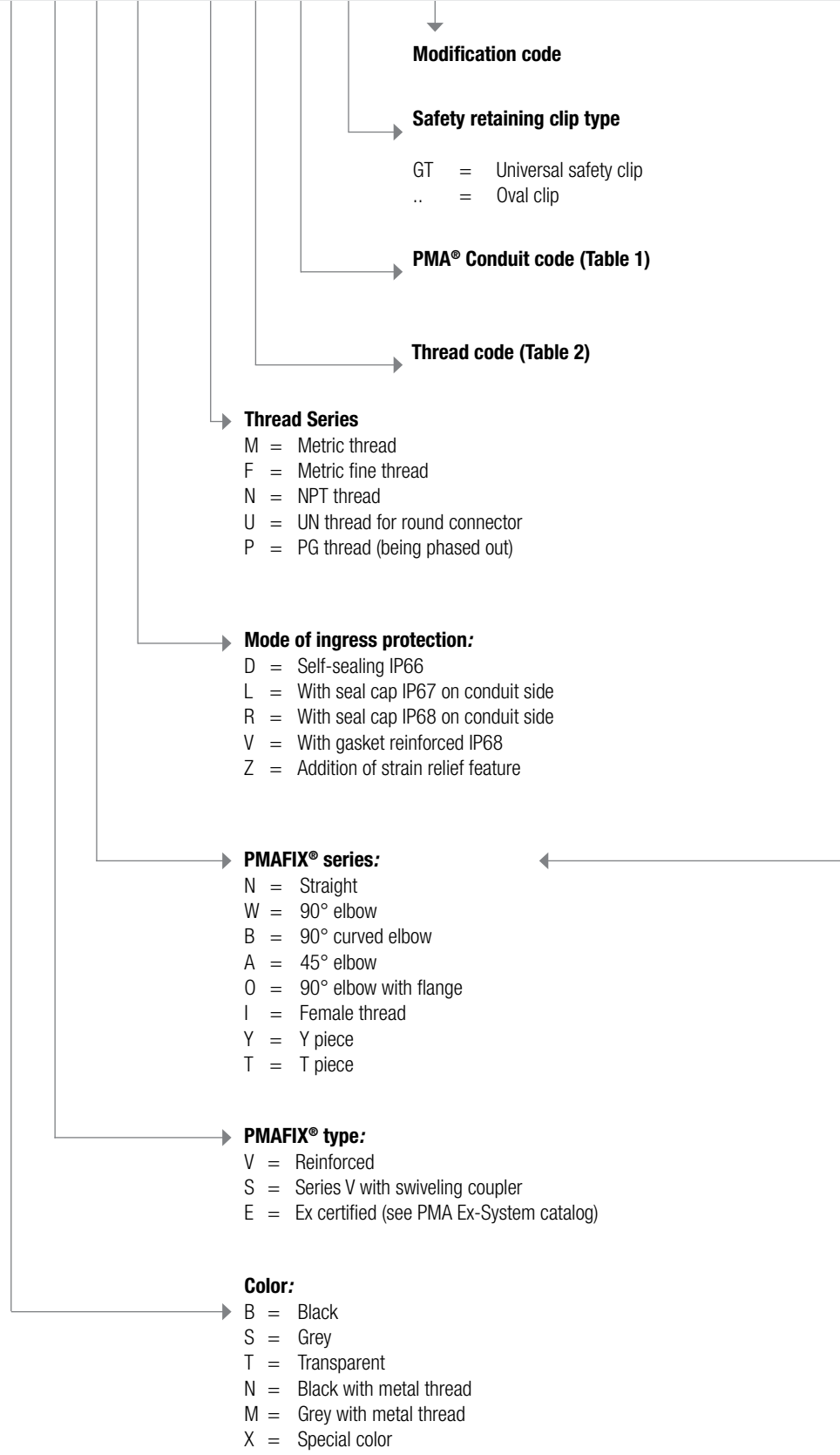
IP68 static
IP67 dynamic
IP69K according
to DIN 40050

- Single-piece PMAFIX® IP68GT fitting with integrated sealing cap and pre-installed locking clip
- Simple push-in assembly (as with the proven PMAFIX® IP66 system)
- Extra-long sealing cap guarantees the highest level of ingress protection
- Identical approvals as for the PMAFIX® IP68 system component version
- Fast modification of specification drawings through simple addition of ‘GT’ to the existing order number (e.g., BVNV-M257 and BVNV-M257GT)
- Additional water protection ring WPS for IP69K ingress protection in conjunction with the IP68 system fitted against the IP68 connector onto the conduit
- Content of delivery: Connector with integrated sealing cap, pre-installed safety clip and thread seal for male thread (O-ring and/or flat gasket)

Connector Part Number Codes

B V N D – M25 3 GT / 01

Connector series



Size codes

Table 1

Conduit codes		
Nominal width	Metric size	PMA code
07	10	M
10	12	0
12	16	2
17	20	7
23	25	3
29	32	9
36	40	6
48	50	8

Additional code for female thread connectors	
Type	PMA code
AMP	A
Souriau (ex Burndy) UTG 6	B
With O-ring groove (MIL C 5015)	G
Souriau (ex Burndy) UTO/UTS	S

Table 2

Thread codes					
Thread metric	PMA code	Thread NPT	PMA code	Thread UN (Female)	PMA code
M12x1.5	M12				
M16x1.5	M16	N ½"	N02	½–28 UNEF	U12
M20x1.5	M20	N ¾"	N04	⅜–24 UNEF	U13
		N 1"	N06	⅝–24 UNEF	U15
M25x1.5	M25	N 1¼"	N07	11/16–24 UNEF	U16
M32x1.5	M32	N 1½"	N08	¾–20 UNEF	U18
M40x1.5	M40	N 2"	N09	13/16–20 UNEF	U20
M50x1.5	M50			7/8–20 UNEF	U21
M63x1.5	M63			15/16–20 UNEF	U23
				1–20 UNEF	U24
				1 1/16–18 UNEF	U26
M 8x1.0	F08			1 3/16–18 UNEF	U29
M12x1.0	F12			1 ¼–18 UNEF	U30
M18x1.0	F18			1 5/16–18 UNEF	U32
				1 3/8–18 UNEF	U34
				1 7/16–18 UNEF	U35
				1 5/8–18 UNEF	U40
				1 ¾–18 UNS	U43
				2–18 UNS	U50
				2 ¼–16 UN	U56
				2 3/8–12 UN	U57
				2 ½–12 UN	U62