

## Sealed Fittings

### Solenoid Connector Interfaces

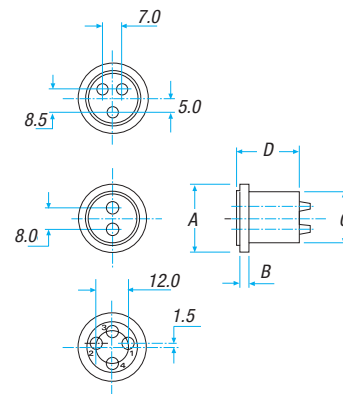
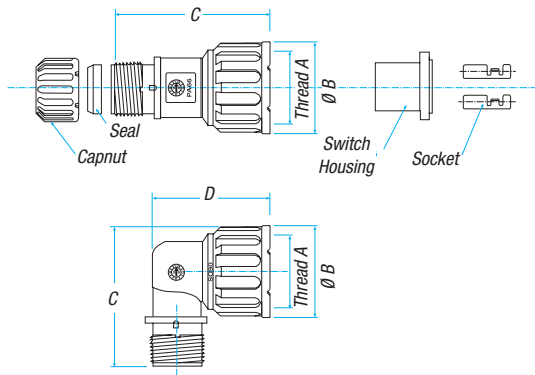
Use screw-thread straight and elbow connectable interfaces for circular solenoids, sensors and switches.

These fittings are designed for use with all types of unslit conduit, thus maintaining maximum conduit bore.

See **page 42** for details on reducing options that enable each straight fitting to accommodate a variety of conduit sizes.

#### Accessories

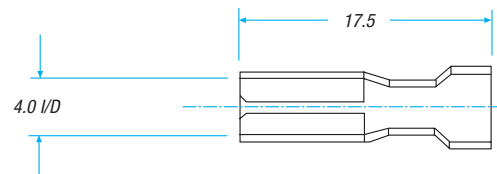
For extending the capability of sealed fittings, contact Technical Support regarding clamping rings, end sleeves/end caps, grommet seals, locknuts, face sealing washers and thread reducers/enlargers.



CAT. NO.	THREAD	NOMINAL DIMENSIONS (MM)				NUT COLOR
		A	B	C	D	
<b>ELBOW FITTING</b>						
SC-M24-90	M24x1.0	31	38.5	40.5		Black
SC-M27-90	M27x1.0	34	40	40.5		Gray

CAT. NO.	THREAD	NOMINAL DIMENSIONS (MM)				NUT COLOR
		A	B	C	D	
<b>STRAIGHT FITTING</b>						
SC-M24-S	M24x1.0	31	53	—		Black
SC-M27-S	M27x1.0	34	54	—		Gray

CAT. NO.	SUITABLE FOR CONNECTOR TYPE	NUMBER OF PINS	DIMENSIONS (MM)			
			A	B	C	D
RSG02	M27	2	25.0	3.5	18.7	23.0
RSG03	M27	3	25.3	3.5	18.0	21.0
RSG04	M27	4	25.3	3.5	18.7	23.0
RSG05	M24	2	22.5	3.5	18.0	23.0
RSG06	M24	3	22.3	3.5	18.0	21.0



#### RSGP01 Socket

CAT. NO.	DESCRIPTION
RSGP01	Single
RSGP01-C	Chain Form