

## B-408 Paper Material

**Color:** White **Finish:** Matte

General purpose paper material for thermal transfer printing. White with matte finish and removable adhesive. Can be repositioned or removed.

**Performance Attributes:**

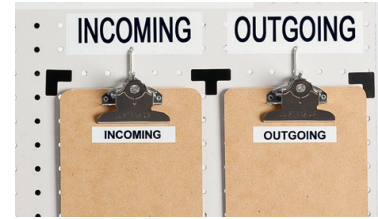
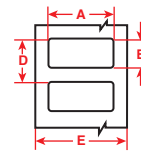


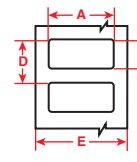
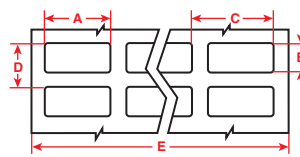
Diagram	Catalog #	Material	Color	Label Width A Inch (mm)	Label Height B Inch (mm)	Vert. Repeat D Inch (mm)	Web Width E Inch (mm)	Labels Per Row	Labels Per Pkg	Rec. Ribbon
Fig. 2	THT-17-408-3	Paper	White	2.000 (50.8)	1.000 (25.4)	1.125 (28.6)	2.200 (55.9)	1	3,000	R6100
Fig. 2	THT-18-408-3	Paper	White	3.000 (76.2)	1.000 (25.4)	1.125 (28.6)	3.200 (81.3)	1	3,000	R6102
Fig. 2	THT-19-408-1	Paper	White	3.000 (76.2)	2.000 (50.8)	2.125 (54.0)	3.200 (81.3)	1	1,000	R6102
Fig. 2	THT-20-408-1	Paper	White	3.000 (76.2)	5.000 (127.0)	5.125 (130.2)	3.200 (81.3)	1	1,000	R6102
Fig. 2	THT-25-408-1	Paper	White	4.000 (101.6)	6.000 (152.4)	6.125 (155.6)	4.200 (106.7)	1	1,000	R6107
Fig. 2	THT-55-408-1	Paper	White	4.000 (101.6)	2.000 (50.8)	2.125 (54.0)	4.200 (106.7)	1	1,000	R6107
Fig. 2	THT-78-408-1	Paper	White	4.000 (101.6)	6.500 (165.1)	6.625 (168.3)	4.200 (106.7)	1	1,000	R6107



## B-422 Polyester Material

**Color:** White **Finish:** Gloss

White material stock with glossy finish and 2 mils of adhesive for rough surface applications, including low surface energy plastics. Designed to withstand solvent exposure. UL rated for surfaces commonly used in solar panel manufacturing. Also used for component identification, barcoding, and asset and inventory tracking.



**Performance Attributes:**

Diagram	Catalog #	Material	Color	Label Width A Inch (mm)	Label Height B Inch (mm)	Horiz. Repeat C Inch (mm)	Vert. Repeat D Inch (mm)	Web Width E Inch (mm)	Labels Per Row	Labels Per Pkg	Rec. Ribbon
Fig. 1	THT-148-422-10	Polyester	White	0.500 (12.7)	0.375 (9.5)	0.600 (15.2)	0.475 (12.1)	2.500 (63.5)	4	10,000	R6002
Fig. 1	THT-149-422-10	Polyester	White	0.500 (12.7)	0.500 (12.7)	0.600 (15.2)	0.625 (15.9)	2.500 (63.5)	4	10,000	R6002
Fig. 1	THT-36-422-10	Polyester	White	0.500 (12.7)	0.200 (5.1)	0.625 (15.9)	0.300 (7.6)	3.200 (81.3)	5	10,000	R6002
Fig. 1	THT-3-422-10	Polyester	White	1.000 (25.4)	0.375 (9.5)	1.075 (27.3)	0.475 (12.1)	3.350 (85.1)	3	10,000	R6007
Fig. 1	THT-5-422-10	Polyester	White	1.000 (25.4)	0.500 (12.7)	1.075 (27.3)	0.600 (15.2)	3.350 (85.1)	3	10,000	R6007
Fig. 2	THT-102-422-10	Polyester	White	1.500 (38.1)	0.370 (9.4)	-	0.500 (12.7)	1.700 (43.2)	1	10,000	R6000
Fig. 1	THT-147-422-10	Polyester	White	1.500 (38.1)	0.375 (9.5)	1.650 (41.9)	0.475 (12.1)	3.350 (85.1)	2	10,000	R6007
Fig. 1	THT-37-422-10	Polyester	White	1.500 (38.1)	0.500 (12.7)	1.650 (41.9)	0.600 (15.2)	3.350 (85.1)	2	10,000	R6007
Fig. 2	THT-17-422-3	Polyester	White	2.000 (50.8)	1.000 (25.4)	-	1.125 (28.6)	2.200 (55.9)	1	3,000	R6000
Fig. 2	THT-7-422-3	Polyester	White	2.750 (69.9)	1.250 (31.8)	-	1.375 (34.9)	2.950 (74.9)	1	3,000	R6002
Fig. 2	THT-18-422-3	Polyester	White	3.000 (76.2)	1.000 (25.4)	-	1.125 (28.6)	3.200 (81.3)	1	3,000	R6002
Fig. 2	THT-19-422-1	Polyester	White	3.000 (76.2)	2.000 (50.8)	-	2.125 (54.0)	3.200 (81.3)	1	1,000	R6002
Fig. 2	THT-76-422-1	Polyester	White	4.000 (101.6)	3.000 (76.2)	-	3.125 (79.4)	4.200 (106.7)	1	1,000	R6007

### Additional Custom Material Available:

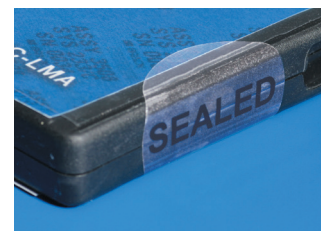


## B-407 Polyolefin Material

**Color:** Clear **Finish:** Matte

Clear polyolefin material for general purpose labeling using thermal transfer technology. Its matte finish offers a "no label" look on matte surfaces. Can be used as an overlaminates. Not recommended for outdoor use.

**Performance Attributes:**



Available as a custom order.  
Contact Customer Service at  
1-888-272-3946 to order.