

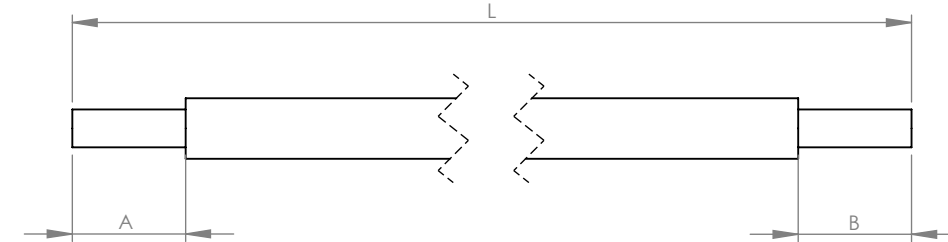
4

3

2

1

Product number	AWG	STRANDING (Cu)	INSULATION	COLOR	CUT LENGTH (INCH)	STRIP - A (INCH)	STRIP - B (INCH)	TIN (Sn63Pb37)
24-1000	30	7, SILVER PLATE	MIL-W-16878/6 (TYPE ET)	BLACK	.80	.04	.04	Y
24-1001	30	7, SILVER PLATE	MIL-W-16878/6 (TYPE ET)	RED	1.80	.10	.10	Y
24-1002	30	7, SILVER PLATE	MIL-W-16878/6 (TYPE ET)	BLACK	1.80	.10	.10	Y
24-1003	30	7, SILVER PLATE	MIL-W-16878/6 (TYPE ET)	BLACK	2.90	.04	.04	Y
24-1004	30	7, SILVER PLATE	MIL-W-16878/6 (TYPE ET)	RED	2.90	.04	.04	Y
24-1005	30	7, SILVER PLATE	MIL-W-16878/6 (TYPE ET)	RED	.95	.04	.04	Y
24-1006	30	7, SILVER PLATE	MIL-W-16878/6 (TYPE ET)	RED	1.50	.04	.04	Y
24-1007	30	7, SILVER PLATE	MIL-W-16878/6 (TYPE ET)	BLACK	2.30	.04	.04	Y
24-1020	30	7, SILVER PLATE	MIL-W-16878/6 (TYPE ET)	BLACK	2.50	.04	.04	Y
24-1021	30	7, SILVER PLATE	MIL-W-16878/6 (TYPE ET)	BLACK	.60	.04	.04	Y
24-1022	30	7, SILVER PLATE	MIL-W-16878/6 (TYPE ET)	BLACK	.80	.04	.04	Y
24-1044	30	7, SILVER PLATE	MIL-W-16878/6 (TYPE ET)	RED	1.10	.08	.15	Y
24-1045	30	7, SILVER PLATE	MIL-W-16878/6 (TYPE ET)	BLACK	2.50	.08	.15	Y
24-1064	30	7, SILVER PLATE	MIL-W-16878/6 (TYPE ET)	BLACK	.68	.04	.04	Y
24-1070	30	7, SILVER PLATE	MIL-W-16878/6 (TYPE ET)	BLACK	3.86	.05	.05	Y
24-1080	30	7, SILVER PLATE	MIL-W-16878/6 (TYPE ET)	BLACK	1.60	.05	.05	Y
24-1081	30	7, SILVER PLATE	MIL-W-16878/6 (TYPE ET)	BLACK	1.65	.04	.04	Y
24-1082	30	7, SILVER PLATE	MIL-W-16878/6 (TYPE ET)	BLACK	1.00	.04	.04	Y
24-1083	30	7, SILVER PLATE	MIL-W-16878/6 (TYPE ET)	RED	1.00	.04	.04	Y
24-1084	30	7, SILVER PLATE	MIL-W-16878/6 (TYPE ET)	BLACK	1.80	.04	.04	Y
24-1085	30	7, SILVER PLATE	MIL-W-16878/6 (TYPE ET)	RED	1.40	.04	.04	Y
24-1106	30	7, SILVER PLATE	MIL-W-16878/6 (TYPE ET)	RED	2.70	.04	.04	Y
24-1120	30	7, SILVER PLATE	MIL-W-16878/6 (TYPE ET)	BLACK	3.00	.04	.04	Y
24-1125	30	7, SILVER PLATE	MIL-W-16878/6 (TYPE ET)	BLACK	2.70	.05	.05	Y
24-1127	30	7, SILVER PLATE	MIL-W-16878/6 (TYPE ET)	BLACK	4.20	.06	.06	Y
24-1128	30	7, SILVER PLATE	MIL-W-16878/6 (TYPE ET)	RED	1.20	.04	.04	Y
24-1129	30	7, SILVER PLATE	MIL-W-16878/6 (TYPE ET)	RED	2.60	.04	.04	Y
24-1150	30	7, SILVER PLATE	MIL-W-16878/6 (TYPE ET)	BLACK	1.30	.04	.04	Y
24-1460	30	7, SILVER PLATE	MIL-W-16878/6 (TYPE ET)	RED	1.60	.06	.06	Y
24-1470	30	7, SILVER PLATE	MIL-W-16878/6 (TYPE ET)	RED	3.20	.04	.04	Y
24-1480	30	7, SILVER PLATE	MIL-W-16878/6 (TYPE ET)	BLACK	3.30	.04	.04	Y
24-1540	30	7, SILVER PLATE	MIL-W-16878/6 (TYPE ET)	RED	1.75	.04	.04	Y
24-1560	30	7, SILVER PLATE	MIL-W-16878/6 (TYPE ET)	RED	1.80	.04	.04	Y
24-1591	30	7, SILVER PLATE	MIL-W-16878/6 (TYPE ET)	BLACK	1.50	.04	.04	Y
24-1600	30	7, SILVER PLATE	MIL-W-16878/6 (TYPE ET)	BLACK	1.85	.04	.04	Y
24-1605	30	7, SILVER PLATE	MIL-W-16878/6 (TYPE ET)	BLACK	1.90	.04	.04	Y
24-1610	30	7, SILVER PLATE	MIL-W-16878/6 (TYPE ET)	BLACK	2.03	.04	.04	Y
24-1630	30	7, SILVER PLATE	MIL-W-16878/6 (TYPE ET)	RED	3.00	.04	.04	Y
24-1640	30	7, SILVER PLATE	MIL-W-16878/6 (TYPE ET)	BLACK	3.60	.04	.04	Y
24-1643	30	7, SILVER PLATE	MIL-W-16878/6 (TYPE ET)	BLACK	3.90	.04	.04	Y
24-1660	30	7, SILVER PLATE	MIL-W-16878/6 (TYPE ET)	BLACK	1.10	.04	.04	Y
24-1680	30	7, SILVER PLATE	MIL-W-16878/6 (TYPE ET)	BLACK	.95	.04	.04	Y
24-1700	30	7, SILVER PLATE	MIL-W-16878/6 (TYPE ET)	RED	3.70	.04	.04	Y
24-1701	30	7, SILVER PLATE	MIL-W-16878/6 (TYPE ET)	RED	3.80	.04	.04	Y
24-1710	30	7, SILVER PLATE	MIL-W-16878/6 (TYPE ET)	RED	2.30	.04	.04	Y
24-1816	30	7, SILVER PLATE	MIL-W-16878/6 (TYPE ET)	BLACK	4.00	.03	.10	Y
24-1817	30	7, SILVER PLATE	MIL-W-16878/6 (TYPE ET)	RED	4.00	.03	.10	Y
24-1818	30	7, SILVER PLATE	MIL-W-16878/6 (TYPE ET)	WHITE	4.00	.03	.10	Y
24-1819	30	7, SILVER PLATE	MIL-W-16878/6 (TYPE ET)	BLACK	1.70	.04	.04	Y



## NOTES:

- MIL-W-16878/6 (TYPE ET)
- INSULATION: EXTRUDED PTFE 0.006"
- CONDUCTOR: SILVER PLATED HIGH STRENGTH COPPER
- CONDUCTOR SIZE: 30 AWG
- STRANDING: 7
- INSULATION DIA: 0.020" MIN 0.024" MAX
- MAX RESISTANCE: 40.5Ω/1000 FEET
- VOLTAGE: 250
- TEMP: -55C TO 200C
- ENDS STRIPPED AND TINNED WITH Sn63Pb37

REV.	DATE	DESCRIPTION	BY
A	11/08/23	INITIAL RELEASE	TP

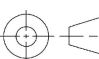
DESCRIPTION:

1211523.SLDPRT

PROPRIETARY AND CONFIDENTIAL  
 THE CONTENTS OF THIS DRAWING AND ALL INFORMATION AND DATA CONTAINED THEREON ARE  
 CONFIDENTIAL AND CONSTITUTE THE EXCLUSIVE PROPERTY OF AMERICAN OUTDOOR BRANDS INC.  
 THE DRAWING AND ITS CONTENTS MAY NOT BE MADE PUBLIC IN ANY MANNER, DISTRIBUTED OR  
 LOANED TO OTHERS, OR REPRODUCED OR COPIED EITHER WHOLE OR IN PART WITHOUT THE PRIOR  
 WRITTEN CONSENT OF AMERICAN OUTDOOR BRANDS INC.

DIM AND TOL PER ASME Y14.5-2018  
 UNLESS OTHERWISE SPECIFIED DIMENSIONS  
 ARE IN MM AND TOLERANCES FOR:  
 .X ±.750 .X ±1.0"  
 .XX ±.500 .X ±.5"  
 .XX ±.250

 **AMERICAN**  
OUTDOOR BRANDS™

 THIRD ANGLE  
PROJECTION

MATERIAL:  
FINISH:  
WEIGHT Kg:  
VOLUME MM<sup>3</sup>:

SIZE	DWG. NO.	REV.
B	1211523	A

SCALE: 1:1 DO NOT SCALE DRAWING SHEET 1 OF 1

4

3

2

1