



Options

Fits	3" Front or Rear Extender	Cable Chase Lift Off Front & Back Only	Cable Chase Top Only	Front Trim Kit (Silver)	Front Trim Kit (Black)	Front Doors					Cable Entry Rear Door
						Solid	Plexi	Vented	Curved Door Vented	Curved Door Plexi	
BGR 45 space racks	BGR-45-EXT3	BGR-CC-45FB	BGR-CC-38LT	BGR-TRIM45	BGR-TRIM45B	BFD-45	BPFD-45	BVFD-45	VFD-45A	PFD-45A	BGR-RDC45
BGR 41 space racks	BGR-41-EXT3	BGR-CC-41FB	BGR-CC-32LT	BGR-TRIM41	BGR-TRIM41B	BFD-41	BPFD-41	BVFD-41	VFD-41A	PFD-41A	BGR-RDC41
BGR 38 space racks	—	BGR-CC-38FB	BGR-CC-27LT	BGR-TRIM38	BGR-TRIM38B	BFD-38	BPFD-38	BVFD-38	VFD-38A	PFD-38A	BGR-RDC38
BGR 25 space racks	—	—	—	BGR-TRIM25	BGR-TRIM25B	BFD-25	BPFD-25	BVFD-25	VFD-25A	PFD-25A	BGR-RDC25
BGR 19 space racks	—	—	—	BGR-TRIM19	BGR-TRIM19B	BFD-19	BPFD-19	BVFD-19	VFD-19A	PFD-19A	BGR-RDC19

Commercial Caster Kit (adds 1")	Inner Platform Base	Leveling Feet*	Seismic Anchor Kit	Ground Isolation Kit	Seismic Ground Iso Kit	21" wide Solid Top Panels	Vented Top Panels	Top Rail Reducer Kits	Fan Tops	Thermostatically Controlled Fan Tops	Set of 2 BGR Drift Pins for Ganging Racks	Vent Blocker Kit	Rear Door Document Pocket
CBS-BGR	BS-BGR	LF-HD	BGR-Z4	BGR-ISO	BGR-ISO-Z4	BGR-STP3	—	—	BGR-276FT (276 CFM)	BGR-276FT-FC (276 CFM)	TDRIFT	VBK-BGR (for BGR)	DOC-SACK
—	—	—	—	—	—	BGR-STP4	—	BGR-TRR4	BGR-552FT (552 CFM)	BGR-552FT-FC (552 CFM)	—	VBK-BGR-SA (for BGR-SA)	—
—	—	—	—	—	—	BGR-STP9	BGR-LVT9	BGR-TRR9	—	—	—	—	—

*Leveling Feet adjust from 7/8" to 2-3/4"

Rail Depth Indicator

front to rear markings on rail bracket allow for easy rail placement

Accommodates	Bays	Riser Bases	Raised Floor Riser Feet	Raised Floor Support Angles	Seismic Riser Bases	Seismic Brackets (1 Set Required Per Rack)	Rack Isolation Kit	Multi-Bay Floor Layout Template
BGR 27" depth racks	1	RIB-1-BGR-27	VFEET-1-12	BANGLE-1	—	—	—	BGR-TEMP-27
BGR 27" depth racks	2	RIB-2-BGR-27	VFEET-2-12	BANGLE-2	—	—	—	BGR-TEMP-27
BGR 27" depth racks	3	RIB-3-BGR-27	VFEET-3-12	BANGLE-3	—	—	—	BGR-TEMP-27
BGR 27" depth racks	4	RIB-4-BGR-27	VFEET-4-12	BANGLE-4	—	—	—	BGR-TEMP-27
BGR 27" depth racks	5	RIB-5-BGR-27	VFEET-5-12	BANGLE-5	—	—	—	BGR-TEMP-27
BGR 32" depth racks	1	RIB-1-BGR-32	VFEET-1-12	BANGLE-1	SRB-1-BGR-3224	BGR-Z4/BGR-ISO-Z4	BGR-ISO	BGR-TEMP-32
BGR 32" depth racks	2	RIB-2-BGR-32	VFEET-2-12	BANGLE-2	SRB-2-BGR-3224	BGR-Z4/BGR-ISO-Z4	BGR-ISO	BGR-TEMP-32
BGR 32" depth racks	3	RIB-3-BGR-32	VFEET-3-12	BANGLE-3	SRB-3-BGR-3224	BGR-Z4/BGR-ISO-Z4	BGR-ISO	BGR-TEMP-32
BGR 32" depth racks	4	RIB-4-BGR-32	VFEET-4-12	BANGLE-4	—	—	—	BGR-TEMP-32
BGR 32" depth racks	5	RIB-5-BGR-32	VFEET-5-12	BANGLE-5	—	—	—	BGR-TEMP-32
BGR 38" depth racks	1	RIB-1-BGR-38	VFEET-1-12	BANGLE-1-38	SRB-1-BGR-3824	BGR-Z4/BGR-ISO-Z4	BGR-ISO	BGR-TEMP-38
BGR 38" depth racks	2	RIB-2-BGR-38	VFEET-2-12	BANGLE-2-38	SRB-2-BGR-3824	BGR-Z4/BGR-ISO-Z4	BGR-ISO	BGR-TEMP-38
BGR 38" depth racks	3	RIB-3-BGR-38	VFEET-3-12	BANGLE-3-38	SRB-3-BGR-3824	BGR-Z4/BGR-ISO-Z4	BGR-ISO	BGR-TEMP-38
BGR 38" depth racks	4	RIB-4-BGR-38	VFEET-4-12	BANGLE-4-38	—	—	—	BGR-TEMP-38
BGR 38" depth racks	5	RIB-5-BGR-38	VFEET-5-12	BANGLE-5-38	—	—	—	BGR-TEMP-38

NOTE: Crating Services available, see web or call for details.





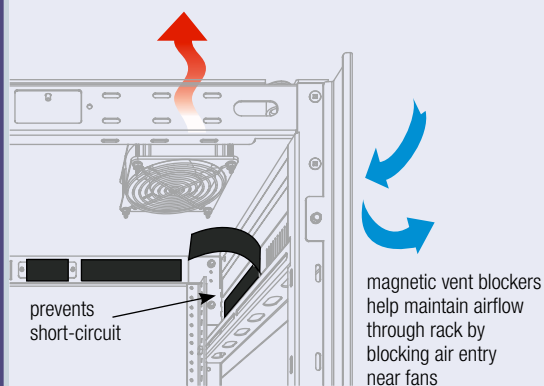
Vent Blockers and Rear Door Kits

Vent Blockers and Rear Door Kits

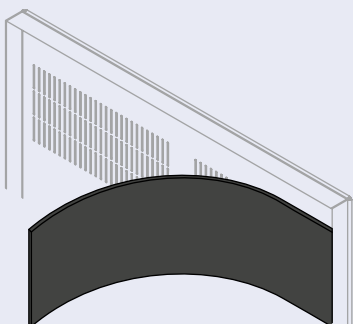
Vent Blockers

Vent blockers are used to prevent the recirculation of hot air between top-mount fans and nearby vent openings. Vent blockers should be placed over the enclosure's vents located on the upper front of the enclosure, upper sides, and upper rear door (depending on enclosure).

This will ensure that heated enclosure air will be forced out through the top-mounted exhaust fans instead of re-circulating, keeping equipment cool.



Vent Blockers mount to the inside of enclosures to block airflow



Part #	Used On
VBK-W27-W32	WRK-xx27 & WRK-xx-32
VBK-WSA27	WRK-xxSA-27
VBK-WSA32	WRK-xxSA-32, WR-xx-32*
VBK-E20	ERK-xx20, DWR-xx-26
VBK-E25	ERK-xx25
VBK-SCRK27	SCRK Series
VBK-D17	DWR-xx-17
VBK-SD-22	SR-40-22, DWR-xx-22
VBK-S28	SR-xx-28

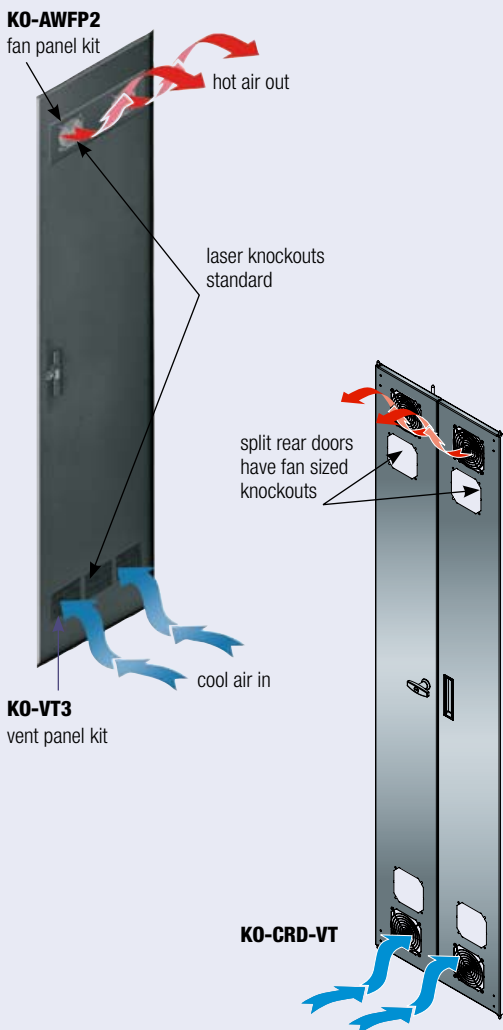
Part #	Used On
VBK-S32	SR-xx-32, DWR-xx-32
VBK-S42	WR-xx-42*
VBK-V	VRK-44-31H/VRK-44-36H
VBK-DRK	DRK Series
VBK-PTRK	PTRK-xx
VBK-PTRK26	PTRK-xx26
VBK-BGR	BGR Series
VBK-BGR-SA	BGR-SA Series

*When WR is not flush against a wall, block the rear opening with the optional rear access panel, model # WR-RAP-xx

BGR and EGR options are shown on rack series pgs.

Thermal Management Kits for Rear Door

Middle Atlantic Products standard solid rear doors on WRK, MRK and ERK Series (pg. 35) enclosures are configurable for achieving optimal active or passive thermal management. Fan, vent and filter kits are available to install after laser knockouts are removed from door. Fan and vent kits now available for solid split rear doors.



KO-AWFP2



KO-VT3



KO-FILTER3

Fits WRK, MRK, ERK Standard Solid Rear Doors	
Part #	Description
KO-AWFP2	fan kit with two fans, 190 CFM
KO-VT3	vent panel kit
KO-FILTER3	filter kit
KO-WSB3	blank panel kit

Fits Solid Split Rear Doors	
Part #	Description
KO-CRD-FAN	fan kit with two fans, 190 CFM and two vents
KO-CRD-VT	filter kit

