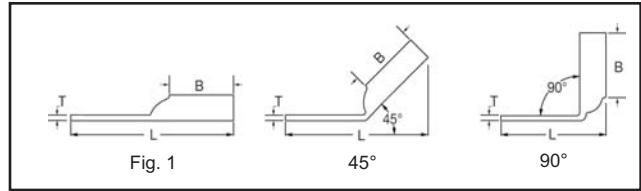
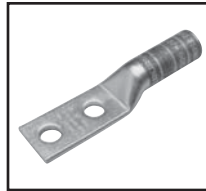


**TWO HOLE HYLUG™
CODE CONDUCTOR
LONG BARREL**
(Continued)



UL Listed 90° C,
600 Volts to 35kV ♦

45° and 90° angles are available.
Please contact Customer Service to order:
1-800-346-4175



C-41

| Catalog Number | Fig # | Conductor | | Stud Hole Size | Stud Hole Spacing | Tongue Width | Figure Dimensions | | | ▲ Installation Tooling | | | | | | |
|----------------|-------|-----------|------------|----------------|-------------------|--------------|-------------------------------------|-------------------------------------|---|--|---|-------------------------------------|----------------------------|------------|-----------|-------------------|
| | | AWG | *** MM² | | | | (B) | (T) | (L) | Dieless (# of crimps) | Mechanical | Hydraulic | | Color Code | Die Index | Wire Strip Length |
| | | | | | | | | | | | MD6, OUR840, MD7-34R | BCT500HS, Y500CTHS | Y35, Y39 Y750, Y46* PAT750 | | | |
| YA2C2TC14 | 1 | #2 AWG | 35 Class 2 | 1/4" | 5/8" | 0.60" | 1.25" | 0.11" | 2.86" | Y1MRTC (4) MY29-3 (2) MY29-11 (2) MRC840 (2) Y644HSXT (1) Y81KFT (2) Y81KFTMBH (2) PAT81KFT-18V (2) | W2CVT (2) W2CRT (2) X2CRT (2) | W2CVT (2) W2CRT (2) X2CRT (2) | U2CRT (2) | Brown | 10 | 1-5/16" |
| YA2C2TC14E2 | | | | 1/4" | 3/4" | 0.60" | 1.25" | 0.11" | 2.98" | | | | | | | |
| YA2C2TC516E2 | | | | 5/16" | 3/4" | 0.60" | 1.25" | 0.11" | 3.05" | | | | | | | |
| YA2C2TC38E2 | | | | 3/8" | 3/4" | 0.60" | 1.25" | 0.11" | 3.17" | | | | | | | |
| YA2C2TC38E6 | | | 3/8" | 7/8" | 0.60" | 1.25" | 0.11" | 3.30" | W1CVT (2) W1CRT-1 (2) X1CRT-1 (2) | | W1CVT (2) W1CRT-1 (2) X1CRT-1 (2) | U1CRT-1 (2) U4CABT (2) | Green | 11 or 375 | 1-7/16" | |
| YA2C2TC38 | | | 3/8" | 1" | 0.60" | 1.25" | 0.11" | 3.42" | | | | | | | | |
| YA2C2NTC38 | | | 3/8" | 1-3/4" | 0.60" | 1.25" | 0.11" | 4.17" | | | | | | | | |
| YA2C2N | | | 1/2" | 1-3/4" | 0.83" | 1.25" | 0.12" | 4.64" | | | | | | | | |
| YA1C2TC14 | 1 | #1 AWG | 50 | 1/4" | 5/8" | 0.67" | 1.38" | 0.10" | 3.03" | W25VT (4) W25RT (4) X25RT (4) | W25VT (4) W25RT (4) X25RT (4) | U25RT (2) U2CABT (2) | Pink | 12 | 1-7/16" | |
| YA1C2TC14E2 | | | | 1/4" | 3/4" | 0.67" | 1.38" | 0.10" | 3.15" | | | | | | | |
| YA1C2TC38 | | | | 3/8" | 1" | 0.67" | 1.38" | 0.10" | 3.59" | | | | | | | |
| YA1C2N | | | | 1/2" | 1-3/4" | 0.83" | 1.38" | 0.12" | 4.82" | | | | | | | |
| YA252TC14 | 1 | 1/0 AWG | — | 1/4" | 5/8" | 0.75" | 1.38" | 0.12" | 3.05" | MY29-3 (2) MY29-11 (2) MRC840 (4) Y644HSXT (1) Y81KFT (2) Y81KFTMBH (2) PAT81KFT-18V (2) | W26VT (4) W26RT (4) X26RT (4) | W26VT (4) W26RT (4) X26RT (4) | U26RT (2) | Black | 13 | 1-9/16" |
| YA252TC14E2 | | | | 1/4" | 3/4" | 0.75" | 1.38" | 0.12" | 3.18" | | | | | | | |
| YA252TC516 | | | | 5/16" | 1" | 0.75" | 1.38" | 0.12" | 3.49" | | | | | | | |
| YA252TC38 | | | | 3/8" | 1" | 0.75" | 1.38" | 0.12" | 3.62" | | | | | | | |
| YA252NTC38 | | | | 3/8" | 1-3/4" | 0.75" | 1.38" | 0.12" | 4.37" | | | | | | | |
| YA252N | 1/2" | 1-3/4" | 0.83" | 1.38" | 0.11" | 4.81" | W27VT (4) W27RT (4) X27RT (6) | W27VT (4) W27RT (4) X27RT (6) | U27RT (2) | Orange | 14 | 1-9/16" | | | | |
| YA262TC14 | 1/4" | 5/8" | 0.83" | 1.50" | 0.12" | 3.22" | | | | | | | | | | |
| YA262TC14E2 | 1/4" | 3/4" | 0.83" | 1.50" | 0.12" | 3.34" | | | | | | | | | | |
| YA262TC38 | 3/8" | 1" | 0.83" | 1.50" | 0.12" | 3.78" | | | | | | | | | | |
| YA262N | 1/2" | 1-3/4" | 0.83" | 1.50" | 0.12" | 4.97" | W28VT (4) W28RT (4) X28RT (6) | W28VT (4) W28RT (4) X28RT (6) | U28RT (2) | Purple | 15 | 1-11/16" | | | | |
| YA272TC14E2 | 1/4" | 3/4" | 0.90" | 1.50" | 0.12" | 3.38" | | | | | | | | | | |
| YA272TC38 | 3/8" | 1" | 0.90" | 1.50" | 0.12" | 3.82" | | | | | | | | | | |
| YA272N | 1/2" | 1-3/4" | 0.91" | 1.50" | 0.13" | 5.01" | | | | | | | | | | |
| YA282TC14E2 | 1 | 4/0 AWG | — | 1/4" | 3/4" | 1.02" | 1.62" | 0.14" | 3.55" | W29VT (4) X29RT (8) | W28VT (4) W28RT (4) X28RT (8) | U29RT (2) | Yellow | 16 | 1-11/16" | |
| YA282TC38 | | | | 3/8" | 1" | 1.02" | 1.62" | 0.14" | 3.99" | | | | | | | |
| YA282NTC38 | | | | 3/8" | 1-3/4" | 1.02" | 1.62" | 0.14" | 4.74" | | | | | | | |
| YA282N | | | | 1/2" | 1-3/4" | 1.02" | 1.62" | 0.14" | 5.17" | | | | | | | |
| YA292TC38 | 1 | 250 kcmil | — | 3/8" | 1" | 1.10" | 1.62" | 0.16" | 4.02" | W29VT (4) X29RT (8) | W28VT (4) W28RT (4) X28RT (8) | U29RT (2) | Yellow | 16 | 1-11/16" | |
| YA292N | | | | 1/2" | 1-3/4" | 1.11" | 1.62" | 0.16" | 5.21" | | | | | | | |
| YA292TC58E16 | | | | 5/8" | 1-3/4" | 1.11" | 1.62" | 0.16" | 5.27" | | | | | | | |

▲ See tooling section of this catalog for complete tool and die listings

* Use PUADP-1 adaptor with U dies in Y46 HYPRESS™

** P-RT die sets for use in Y46 HYPRESS™ only, PUADP-1 adaptor not required

*** The MM² conductor sizes listed are the recommendations for Class 2 conductor Available undrilled. Add suffix U to catalog number (example: YA25U)

♦ For applications greater than 2000 Volts consult cable manufacturer for voltage stress relief instructions
Note: All dimensions shown are for reference only

Blue highlighted items are industry standard and most frequently ordered.