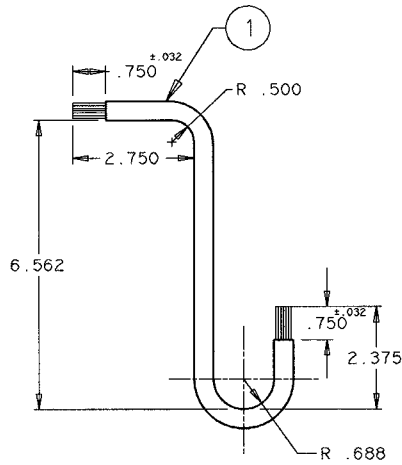
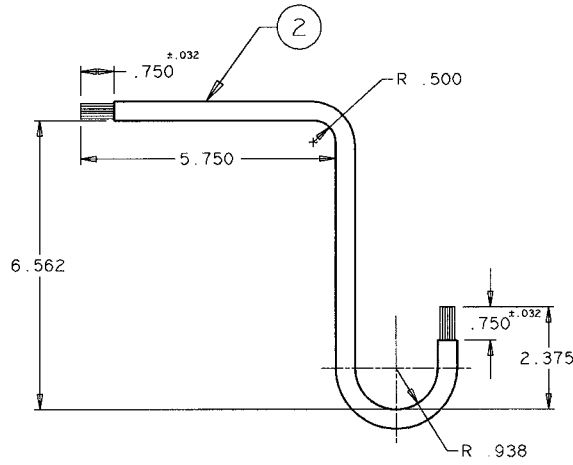


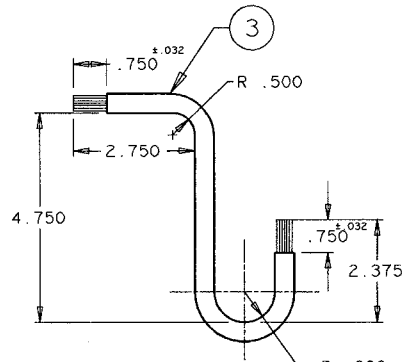
| DATE | REV. | BY | DESCRIPTION |
|-------|------|----|-------------------|
| 07/97 | 1 | PW | DIM. TOL. REVISED |



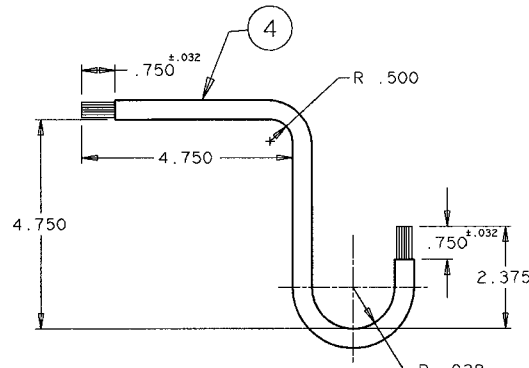
B43C473-1



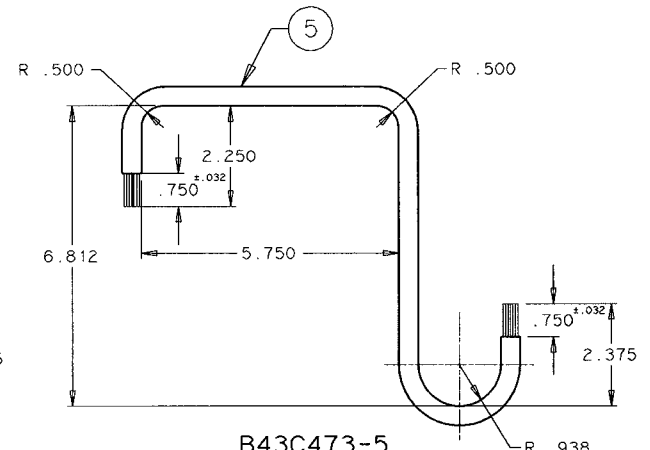
B43C473-2



B43C473-3

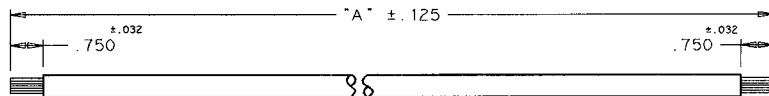


B43C473-4



B43C473-5

NOTE: RE-TRIM STRANDS ON EACH END OF WIRE PER DIMENSION IF REQUIRED



| | | | | |
|---|-----------|----------------------------------|--------|---------|
| 5 | B43C473-5 | AWG #1/0 TWH (75C) 19 STRD BLACK | 19.000 | 7 JAW |
| 4 | B43C473-4 | AWG #1/0 TWH (75C) 19 STRD BLACK | 14.200 | 7 JAW |
| 3 | B43C473-3 | AWG #1/0 TWH (75C) 19 STRD BLACK | 12.200 | 7 JAW |
| 2 | B43C473-2 | AWG #1/0 TWH (75C) 19 STRD BLACK | 17.000 | 4/5 JAW |
| 1 | B43C473-1 | AWG #1/0 TWH (75C) 19 STRD BLACK | 14.000 | 4/5 JAW |

| ITEM NO. | PART NO. | DESCRIPTION | "A" | FOR |
|----------------|----------|----------------------------------|------------------------|---------------------|
| | | COPPER WIRE | B43C73- | |
| TOTAL | FINISH | MATERIAL | PART No. | QTY CODE LABOR MAT. |
| ASSEMBLED ON | | TITLE | | DWG. No. |
| 100A MS METER | | BREAKER WIRE | | REV. |
| 4/5/7 JAW SQ.D | | FOR SQ.D QOB | | B43C473 |
| SCALE | 1:2 | TOL. UNLESS OTHERWISE SPECIFIED. | TOL. S/N ON SPECIFICS. | |
| DRAWN | P.W. | DATE | 01/97 | |
| CHECKED | | DATE | July 97 | |
| CONTROL | | FRACT. DIM. | ±.125 | |
| APP'D | | ANG. | ±.3 | |
| TORONTO | | SCHNEIDER CANADA | | LOCATION OF ORIGIN |
| | | | | L'ENDROIT D'ORIGINE |