



DESC: 12/1 14/1 26/4 28/2 CABLE 80°C 30V

DWG NO: FCAB128C-002

ITEM SPECS.

SCALE: 15x

DATE: 4/24/06

DR. BY: DP LANGER

NWI P/N: FCAB128C-002

CUSTOMER: INDUSTRIAL ELECTRIC

CUSTOMER P/N: 0008CBSP-0NW

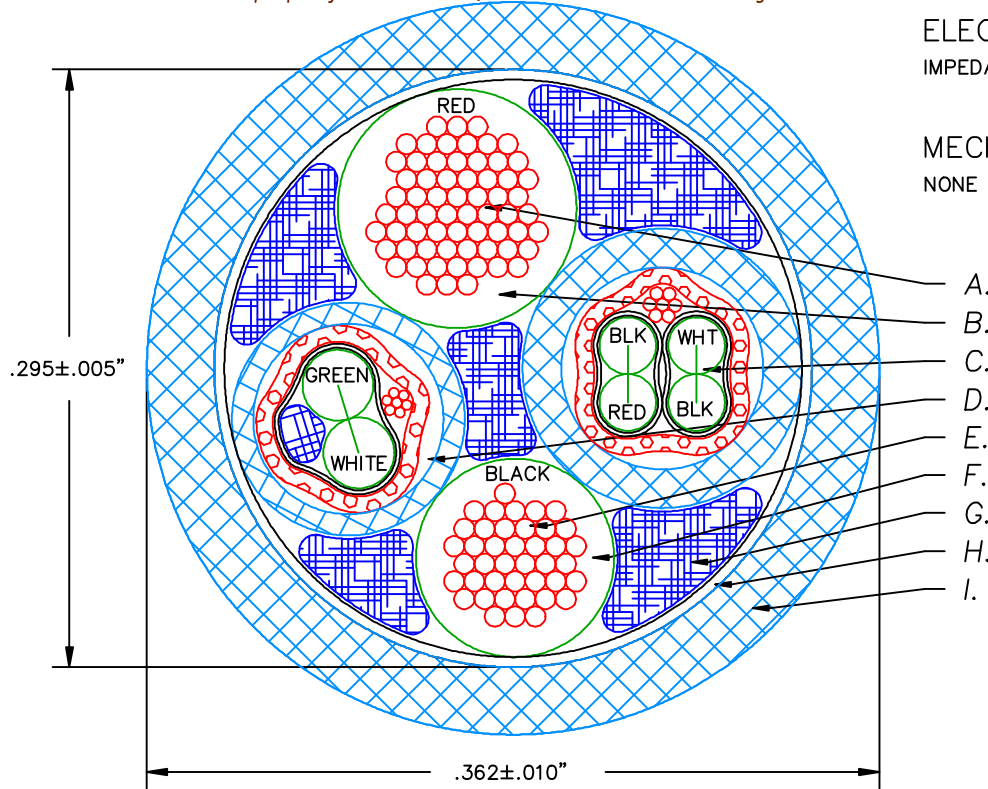
- A. 12 GAUGE 65x30TC BUNDLED
- B. 9 MILS SEMI-RIGID PVC INSULATION 80°C 30V
- 7 MILS MIN. SEMI-RIGID PVC INSULATION
O.D. .118±.002"
- C. SUB ASSEMBLY 26/4 CABLE
- D. SUB ASSEMBLY 28/2 CABLE
- E. 14 GAUGE 41x30TC BUNDLED
- F. 9 MILS SEMI-RIGID PVC INSULATION 80°C 30V
- 7 MILS MIN. SEMI-RIGID PVC INSULATION
O.D. .098±.002"
- G. POLY FILLER
- H. PTFE TAPE WRAP
20% OVERLAP 100% COVERAGE
- I. 30 MILS PRESSURED PVC JACKET 80°C 30V
- 24 MILS MIN. PVC JACKET BLACK JACKET
CABLE IS NOT UL OR CSA APPROVED

NORTHWIRE RESTRICTED

This document contains Northwire, Inc. proprietary data, and is not to be copied, reproduced, used or divulged to unauthorized persons, in whole or in part, without proper authorization in writing from Northwire, Inc. This information is the property of Northwire, Inc. which reserves all rights to it.

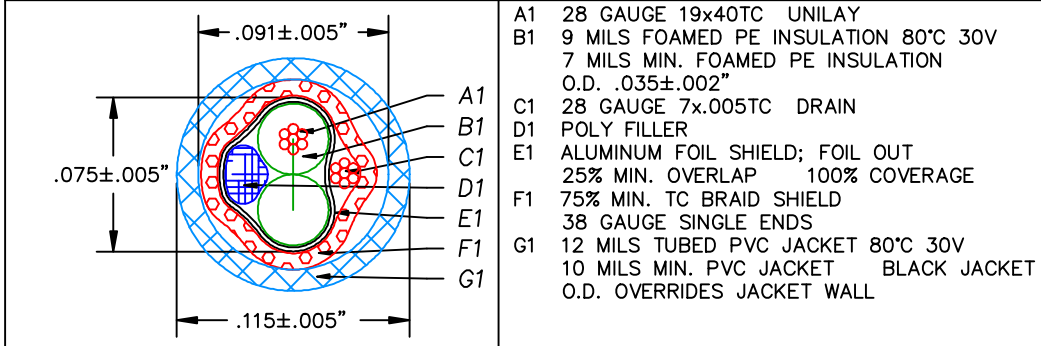
ELECTRICAL REQUIREMENTS:
IMPEDANCE ON 28 AWG PAIR: 90±13.5 Ohms

MECHANICAL REQUIREMENTS:
NONE SPECIFIED

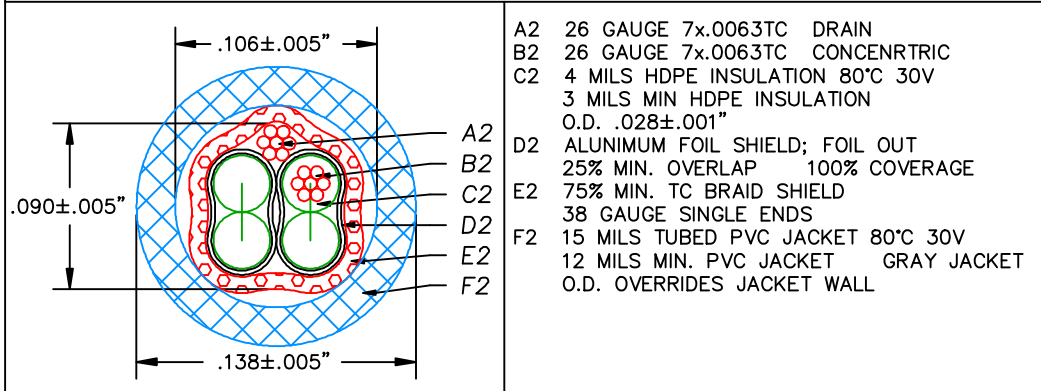


COLOR ROTATION COULD VARY

SUB ASSEMBLY 28/2



SUB ASSEMBLY 26/4



INITIAL RELEASE	A	4/24/06	DPL	
REVISION RECORD	REV	REV DATE	APPROVAL	APPROVAL