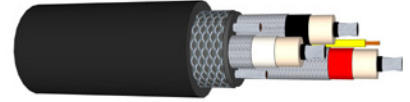


EPR/CPE - SHD Type GC

Mining / Portable Power Cable - 3 Conductor Round Shielded w/ 2 Ground and 1 Ground Check Conductors

UL: -40°C to 90°C, 8kV

CSA: -40° to 90°C, 8kV, FT1, FT5



IEWC Part Number	AWG	Stranding	Ground Conductor AWG	Ground Check AWG	Nominal Insulation Thickness		Nominal O.D.		Approx. Weight		Ampacity ⁰¹
					in	mm	in	mm	lbs/1k ft	kg/km	
SHD0403EC/8	4	259	8	8	0.150	3.8	1.94	49.3	2,308	3,434	122
SHD0303EC/8	3	133	7	8	0.150	3.8	1.93	49.0	2,293	3,412	140
SHD0203EC/8	2	259	6	8	0.150	3.8	2.12	53.8	2,920	4,345	159
SHD0103EC/8	1	259	5	8	0.150	3.8	2.21	56.1	3,292	4,898	184
SHD1/003EC/8	1/0	259	4	8	0.150	3.8	2.32	58.9	3,675	5,468	211
SHD2/003EC/8	2/0	329	3	8	0.150	3.8	2.46	62.5	4,304	6,404	243
SHD3/003EC/8	3/0	413	2	8	0.150	3.8	2.62	66.5	5,200	7,738	279
SHD4/003EC/8	4/0	532	1	8	0.150	3.8	2.75	69.9	5,840	8,690	321
SHD25003EC/8	250	608	1/0	6	0.150	3.8	2.89	73.4	6,774	10,080	355
SHD30003EC/8	300	741	1/0	6	0.150	3.8	3.04	77.2	7,423	11,045	398
SHD35003EC/8	350	851	2/0	6	0.150	3.8	3.21	81.5	8,543	12,712	435
SHD50003EC/8	500	1,221	4/0	6	0.150	3.8	3.56	90.4	11,260	16,755	536

⁰¹ Ampacities are for general use of 90°C conductor @ 40°C ambient temperature per ICEA S-75-381 / NEMA WC-58

Notes

- Soft-annealed, tinned copper conductor
- Ethylene propylene rubber (EPR) insulation
- Nylon semi-conducting tape shield
- Uninsulated ground conductor
- Insulated ground check conductor
- Open reinforcement in jacket
- Open reinforced, two-layer, chlorinated polyethylene (CPE) jacket
- MSHA Approved
- ICEA S-75-381/ NEMA WC-58
- Standard jacket color: black
- Standard conductor insulation colors: black, red and white
- Ground check conductor insulation color: yellow

Alternative Constructions

- Ethylene propylene diene monomer (EPDM) insulation
- Thermoplastic polyurethane (TPU) jacket
- 5kV constructions

Available Certifications

- CSA/CAN: 22.2(#96)
- Pennsylvania Department of Environmental Protection P-184

Applications

For use in mining & off-road, and portable power applications. Rated for continuous use from -40°C up to 90°C.