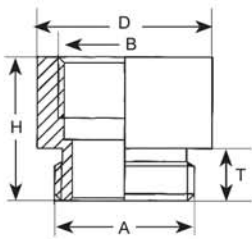
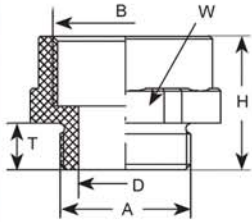


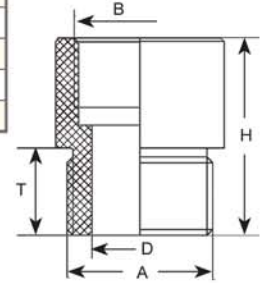


Type A



Type C

\*Note: Parts are made of Polypropylene.



**Black Nylon/Polypropylene\* - Thread Enlargers:**  
*Metric to Metric Threads\**

Part Numbers	Threads		Adapter Type	Dimensions in Inches (mm)			
	Male Thread A	Female Thread B		T	H	D	W
				Thread Length	Height	Inner Diameter	Wrench Flat
EM-1216-BK	M12 x 1.5	M16 x 1.5	A	.31 (8)	.47 (12)	.26 (6.5)	.83 (21)
EM-1620-BK	M16 x 1.5	M20 x 1.5	A	.31 (8)	.51 (13)	.35 (9)	.98 (25)
EM-2025-BK	M20 x 1.5	M25 x 1.5	A	.31 (8)	.59 (15)	.55 (14)	1.18 (30)
EM-2532-BK	M25 x 1.5	M32 x 1.5	C*	.59 (15)	.59 (15)	.65 (16.5)	N/A
EM-3240-BK	M32 x 1.5	M40 x 1.5	C*	.59 (15)	.77 (19.5)	.91 (23)	N/A
EM-4050-BK	M40 x 1.5	M50 x 1.5	C*	.59 (15)	.77 (19.5)	1.18 (30)	N/A
EM-5063-BK	M50 x 1.5	M63 x 1.5	C*	.59 (15)	.79 (20)	1.54 (39)	N/A

Operating Temperature (Nylon/Polypropylene Enlargers): -4 °F to 176 °F (-20 °C to 80 °C)

**Nickel Plated Brass - Thread Enlargers: PG to PG Threads\***

Part Numbers	Threads		Dimensions in Inches (mm)		
	Male Thread A	Female Thread B	D	T	H
			Outer Diameter	Thread Length	Height
EP-0709-BR	PG 7	PG 9	.67 (17)	.20 (5)	.59 (15)
EP-0911-BR	PG 9	PG 11	.79 (20)	.24 (6)	.65 (16.5)
EP-0913-BR	PG 9	PG 13 / 13.5	.87 (22)	.24 (6)	.69 (17.5)
EP-1113-BR	PG 11	PG 13 / 13.5	.87 (22)	.24 (6)	.69 (17.5)
EP-1116-BR	PG 11	PG 16	.94 (24)	.24 (6)	.73 (18.5)
EP-1121-BR	PG 11	PG 21	1.18 (30)	.24 (6)	.81 (20.5)
EP-1316-BR	PG 13 / 13.5	PG 16	.94 (24)	.26 (6.5)	.75 (19)
EP-1321-BR	PG 13 / 13.5	PG 21	1.18 (30)	.26 (6.5)	.83 (21)
EP-1621-BR	PG 16	PG 21	1.18 (30)	.26 (6.5)	.83 (21)
EP-1629-BR	PG 16	PG 29	1.54 (39)	.26 (6.5)	.88 (22.5)
EP-2129-BR	PG 21	PG 29	1.54 (39)	.28 (7)	.91 (23)
EP-2936-BR	PG 29	PG 36	1.97 (50)	.31 (8)	1.08 (27.5)
EP-3642-BR	PG 36	PG 42	2.24 (57)	.35 (9)	1.22 (31)
EP-4248-BR	PG 42	PG 48	2.52 (64)	.39 (10)	1.30 (33)

**Nickel Plated Brass - Thread Enlargers: Metric to Metric Threads\***

Part Numbers	Threads		Dimensions in Inches (mm)		
	Male Thread A	Female Thread B	D	T	H
			Outer Diameter	Thread Length	Height
EM-1216-BR	M12 x 1.5	M16 x 1.5	.71 (18)	.20 (5)	.59 (15)
EM-1620-BR	M16 x 1.5	M20 x 1.5	.87 (22)	.24 (6)	.69 (17.5)
EM-2025-BR	M20 x 1.5	M25 x 1.5	1.06 (27)	.26 (6.5)	.75 (19)
EM-2532-BR	M25 x 1.5	M32 x 1.5	1.34 (34)	.26 (6.5)	.83 (21)
EM-3240-BR	M32 x 1.5	M40 x 1.5	1.65 (42)	.28 (7)	.91 (23)
EM-4050-BR	M40 x 1.5	M50 x 1.5	2.09 (53)	.35 (9)	1.22 (31)
EM-5063-BR	M50 x 1.5	M63 x 1.5	2.60 (66)	.35 (9)	1.22 (31)

**Nickel Plated Brass - Thread Enlargers: NPT to NPT Threads\***

Part Numbers	Threads		Dimensions in Inches (mm)		
	Male Thread A	Female Thread B	D	T	H
			Outer Diameter	Thread Length	Height
EN-3812-BR	3/8" NPT	1/2" NPT	1.10 (28)	.59 (15)	1.50 (38)
EN-1234-BR	1/2" NPT	3/4" NPT	1.10 (28)	.79 (20)	1.50 (38)
EN-1210-BR	1/2" NPT	1" NPT	1.36 (34.5)	.79 (20)	1.75 (44.5)
EN-3410-BR	3/4" NPT	1" NPT	1.38 (35)	.71 (18)	1.69 (43)
EN-1054-BR	1" NPT	1-1/4" NPT	1.73(44)	.94 (24)	1.97 (50)

**Is your thread size off by one size?**

**These Enlargers will solve that threading problem.**

**They convert holes which fit PG, NPT or Metric threads to a larger female thread of the same thread type.**



More custom parts available online at [www.sealconusa.com](http://www.sealconusa.com) or upon request!



Optional Locking Nuts, O-Rings & Other Accessories starting on Page 28 - 39.

\*Note: O-Ring not Included