

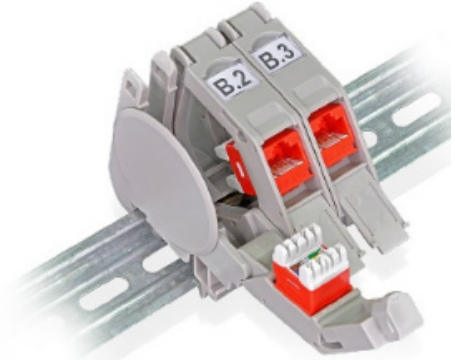
WORK AREA SOLUTIONS

Industrial Grade Mounting Hardware

DIN-Rail Mounting Modules

KEY FEATURES

- Engineered to save space in small factory enclosures or NEMA boxes
- Compatible with all Signamax high-density keystone connectors
- Grounding clip included to ground straight to the DIN-rail
- Stackable design with removable sides, allows simple installation for however many ports are needed



ORDERING INFORMATION

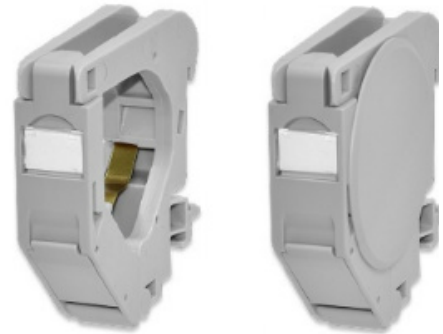
PART NO.	DESCRIPTION
KI-DIN-RMM-SL-X	Keystone Jack & DIN-Rail Mounting Module Kit with 2 Side Lids
KI-DIN-RMM-X	Keystone Jack & DIN-Rail Mounting Module Kit without Side Lids
KI-DIN-RMM-SL	Keystone Industrial DIN-Rail Mounting Module with 2 Side Lids
KI-DIN-RMM	Keystone Industrial DIN-Rail Mounting Module without Side Lids

Specify category by substituting **X** in P/N with:

C6AC: Cat 6A UTP **C6C**: Cat 6 UTP **C5E**: Cat 5e UTP

SC6AC: Cat 6A FTP **SC6C**: Cat 6 FTP **SC5E**: Cat 5e FTP

Keystone Jacks are MT-series in light ivory (refer to pages C1-9), for additional color options contact customer service.



Optical Fiber Distribution Box

KEY FEATURES

- DIN-Rail & surface mountable
- Termination density up to 24 maximum fibers
- Eight internal brackets to assist with proper fiber management
- Two cable entry ports with multiple fitting options
- Integrated for a customizable LGX modular adapter plate

ORDERING INFORMATION

PART NO.	DESCRIPTION
OFDB-01	Surface Mount Optical Fiber Distribution Box
OFDB-01DR	DIN-Rail Mount Optical Fiber Distribution Box

Accessories & plates sold separately.

Refer to page B6 for accessories & pages B13-15 for adapter plate options.



SPECIFICATIONS

DIMENSIONS

2.66" D x 0.71" W x 2.78" H (67.5 mm x 18.0 mm x 70.5 mm)

Width with Sides: 0.83" W (21.0 mm)

* For certifications on keystone jacks go to pages C1 thru C8 or page B16 for fiber

CONSTRUCTION

Housing: High impact thermoplastic, UL94V-0 fire retardant

Jack Spring Wire: Bronze alloy

For specifications on requests, please go to pages 12, 13, 14 or page 150 for more.



C25

SIGNAMAX CONNECTIVITY SOLUTIONS