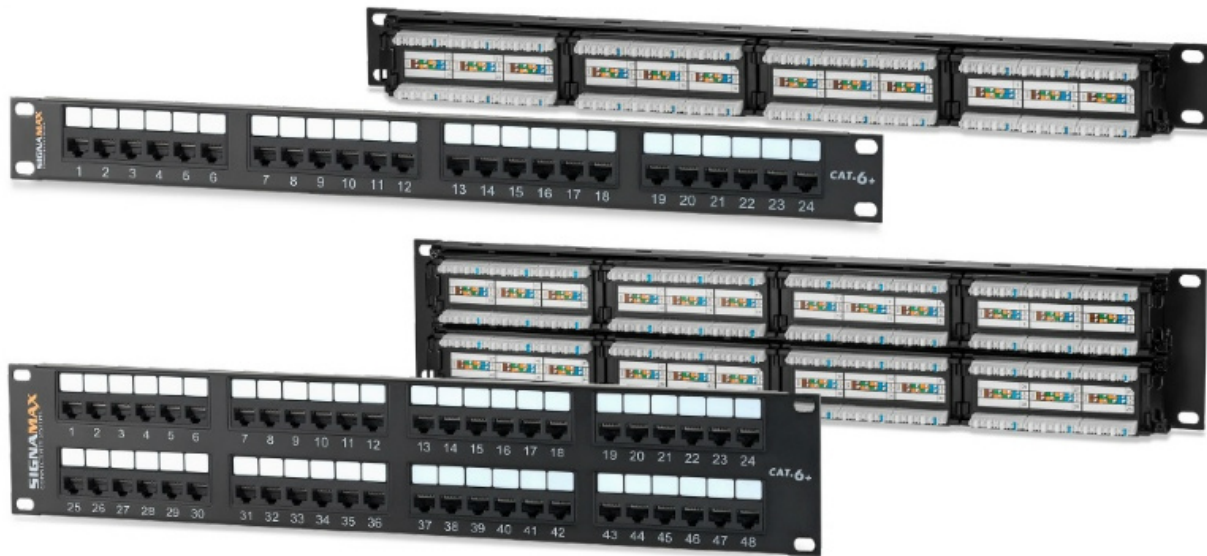


# COPPER SOLUTIONS

## Category 6 MD-Series Unscreened Patch Panels

### KEY FEATURES

- Exceeds ANSI/TIA-568-C.2 component performance
- Modular blocks with built-in PCB-based jacks ensure Category 6 parameters
- Easy-to-read T568A/B wiring scheme color-coded label
- Port designation features along each port for quick identification
- Designed for optional snap-in cable management bar
- Cold-rolled steel construction for maximum strength and durability



## Category 6 MD-Series Unscreened Patch Panels

### ORDERING INFORMATION

| PART NO.    | DESCRIPTION                                     |
|-------------|---|
| 12458MD-C6C | 12-Port Category 6 MD-Series Patch Panel, 1 RMU |
| 24458MD-C6C | 24-Port Category 6 MD-Series Patch Panel, 1 RMU |
| 48458MD-C6C | 48-Port Category 6 MD-Series Patch Panel, 2 RMU |

Optional cable management accessories sold separately; refer to page F5.

### REAR CABLE MANAGEMENT



### FRONT CABLE MANAGEMENT



## Category 6 EC-Series Unscreened Patch Panels

### KEY FEATURES

- Exceeds ANSI/TIA-568-C.2 Category 6 component performance
- Modular blocks with built-in PCB-based jacks ensure Category 6 parameters
- Hinged clear windows over each set of ports for quick identification
- Removable (screwed-on) rear cable management bar
- Standard termination with single-position or multi-pair 110 termination tools
- Easy-to-read T568A/B wiring scheme color-coded label
- Cold-rolled steel construction for maximum strength and durability



## Category 6 EC-Series Unscreened Patch Panels

### ORDERING INFORMATION

| PART NO.   | DESCRIPTION                                     |
|------------|---|
| 24458EC-C6 | 24-Port Category 6 EC-Series Patch Panel, 1 RMU |
| 48458EC-C6 | 48-Port Category 6 EC-Series Patch Panel, 2 RMU |

#### REMOVABLE CABLE MANAGEMENT



#### HINGED LABELING WINDOW

