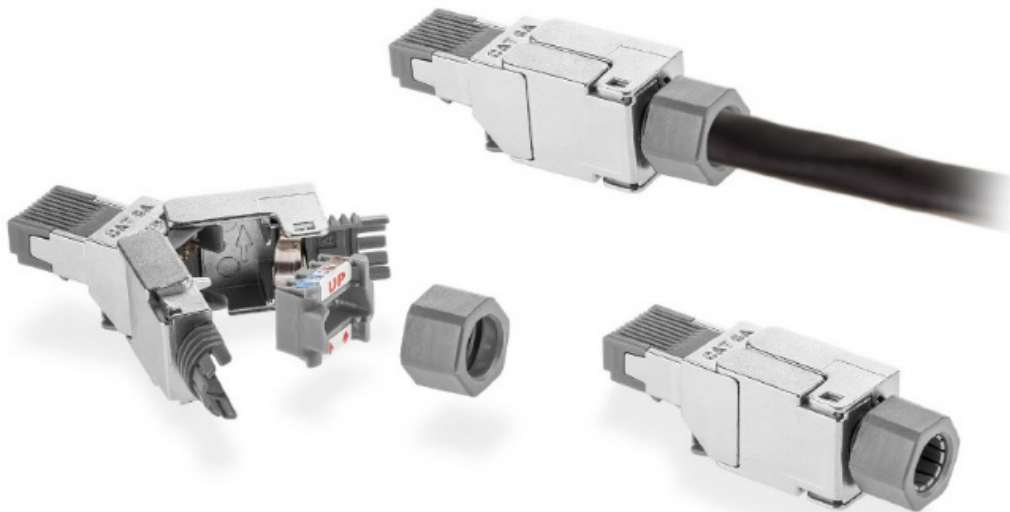


PATCH CORDS

Screened Field-Installable Modular Plugs

KEY FEATURES

- Guaranteed performance per ANSI/TIA-568-C.2 & ISO/IEC 11801 specifications
- Overall solid-metal shielding design for 360-degree screen coverage
- Compatible with all Signamax modular connectors
- Toolless field termination with PCB-based electrical design
- Compatible with solid and stranded conductors
- Easy-to-read T568A/B wiring scheme color-coded label



ORDERING INFORMATION

PART NO.	DESCRIPTION
KRJS45FT-C6A	Category 6A Screened Field-Installable Modular Plug
KRJS45FT-C6C	Category 6 Screened Field-Installable Modular Plug
KRJS45FT-C5E	Category 5e Screened Field-Installable Modular Plug

SPECIFICATIONS

ELECTRICAL

Insulation Resistance: Min 500 MOhm @ 100 Vdc

Dielectric Withstanding Voltage:

1,000 Vdc/ac peak contact-to-contact @ 60 Hz for 1 min

1,500 Vdc/ac peak contact-to-panel @ 60 Hz for 1 min (screened only)

MECHANICAL

Mating Cycle Life: Min 750 cycles

IDC Wire Gauge: 23 to 26 AWG

CONSTRUCTION

Housing: Zinc-alloy

Contact Pin: Phosphor bronze alloy plated with 50 µin of gold

IDC: 110 type, phosphor bronze alloy with 100 µin 100% tin alloy

DIMENSIONS

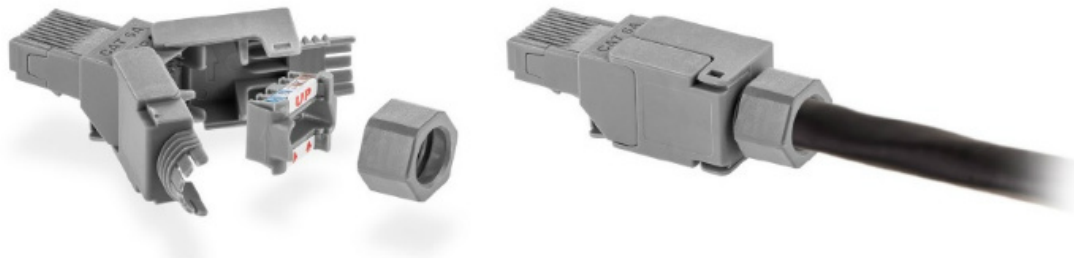
1.96" L x 0.54" W x 0.59" H (49.7 mm x 13.8 mm x 15.0 mm)

**FIELD-INSTALLABLE
MODULAR
PLUGS**

Unscreened Field-Installable Modular Plugs

KEY FEATURES

- Guaranteed performance per ANSI/TIA-568-C.2 specifications
- Compatible with all Signamax modular connectors
- Rated for at least 750 insertion cycles
- Toolless field termination with PCB-based electrical design
- Compatible with solid and stranded conductors
- Easy-to-read T568A/B wiring scheme color-coded label



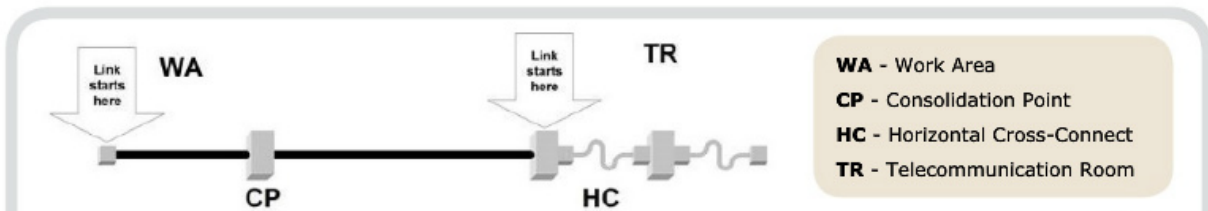
ORDERING INFORMATION

PART NO.	DESCRIPTION
KRJ45FT-C6A	Category 6A Unscreened Field-Installable Modular Plug
KRJ45FT-C6C	Category 6 Unscreened Field-Installable Modular Plug
KRJ45FT-C5E	Category 5e Unscreened Field-Installable Modular Plug

TECH TIP FOCUS: THE DIRECT ATTACH MODEL

THE WHAT, WHEN, & WHERE

Single-Connector Modified Permanent Link (also known as "direct-attach" model) represents scenarios in Horizontal cabling when the link services such field devices as, BMS controllers and sensors, security cameras, wireless access points, etc. In such scenarios, installation of a Work Area outlet is not feasible or not allowed because of safety reasons, so the distribution cable on the Work Area side is terminated by an 8P8C modular plug, like the SIGNAMAX Field-Installable Modular Plug, and connected directly into the field device. It is recommended to provide appropriate cable slack at the Work Area location.



Recognized standards: ANSI/TIA-862 (Building Automation Systems Cabling Standard) & ANSI/BICSI 005 (Electronic Safety & Security (ESS) System Design & Implementation Best Practices).

Technical Support: techsupport@signamax.com or 1.800.446.2377

